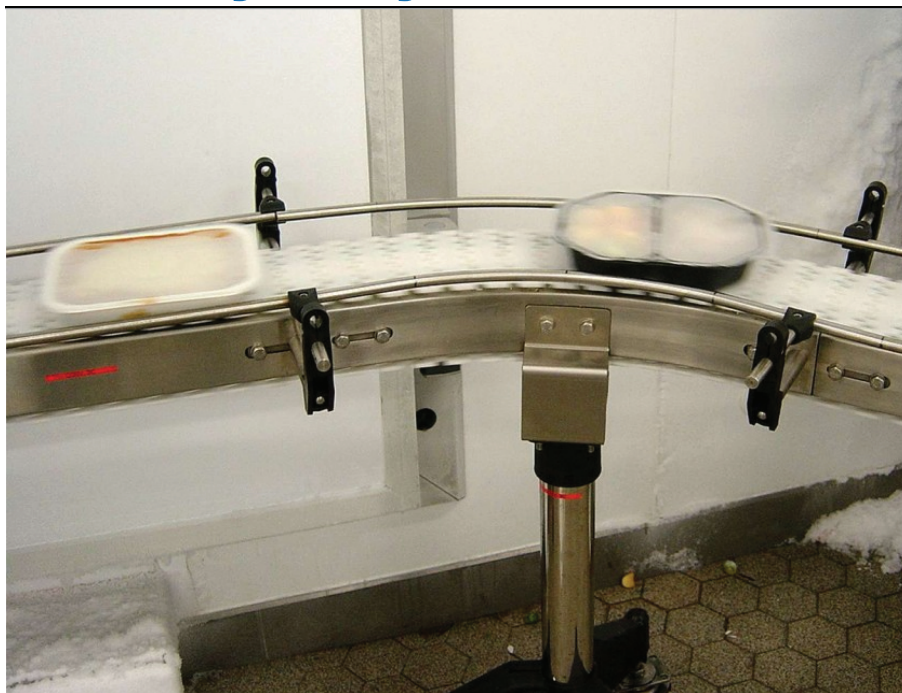


Conveyor System DL2



Description

140mm width thermoplastic chain with stainless steel frame. Also available with aluminium frame conveyor system, please refer section ML2.

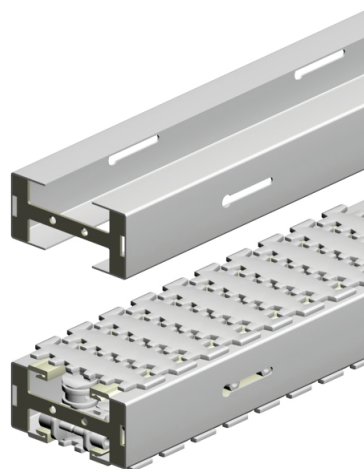
Examples of application industries

Personal Products, Pharmaceutical & Chemical Industry, Automotive & Machined Parts Industry, Food & Packaging Industry, Electrical & Electronic Industry, Paper Converting Industry and Optical Industry

Technical characteristics

Chain Width		140 mm
Chain Pitch		44.5 mm
Chain Weight		2.5 kg/m
Max Tension	With Wheel Bend	1000 N
	Without Wheel Bend	1200 N
Max Product Weight*	Horizontal Transport	25 kg
	Vertical Transport	15 kg
Total Load*		400 Kg
Working Temperature*		-10°C to 60°C
Max Conveyor Length*		30m
Max Speed*		50 m/min
Drive Unit Capacity		1200 N
Item Width*		25-320 mm

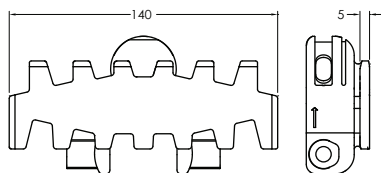
* Actual limit may vary according to conveyor layout and application.



Please consult MODU representative for further information and assistance.

Units: Dimension (mm)

Chains ML2

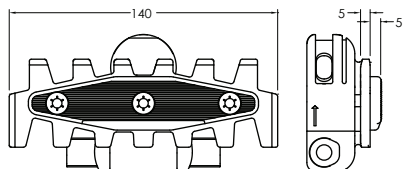


Plain Chain

- Suitable for conveyor configuration with incline/decline up to 5°.
- Accumulation possible.



Item Code	Material	Colour	Weight	Supply
ML2 CP 5	POM	White	13.0 kg/roll	5m/roll
ML2 CP 5A	Anti-Static	Black	13.0 kg/roll	5m/roll
ML2 CP 5K	POM-Kevlar	Yellow	15.6 kg/roll	5m/roll

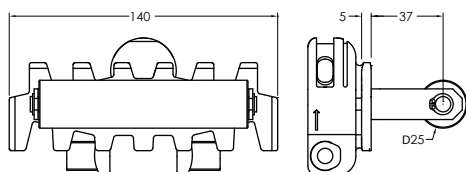


Insert Friction Chain

- Suitable for conveyor configuration with incline/decline up to 25°.
- Friction material : TPE (grey).
- Accumulation not possible.

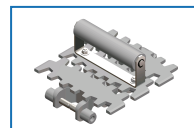


Item Code	Material	Colour	Weight	Supply
ML2 CF 5	POM	White	15.0 kg/roll	5m/roll
ML2 CF 5A	Anti-Static	Black	15.0 kg/roll	5m/roll
ML2 CF 5K	POM-Kevlar	Yellow	17.0 kg/roll	5m/roll

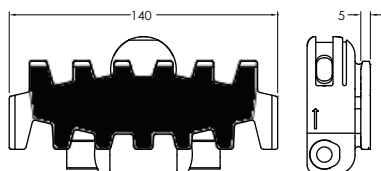


Roller Cleated Chain

- Required for vertical or steeply inclined / declined conveyor.
- Accumulation not possible.
- Not suitable to be use with Combined and Catenary Drive.
- Please specify pitch between cleat for ordering (eg. ML2 CC 3 3p = Every 3rd link to be cleated).
- **Please consult MODU for actual Chain weight.

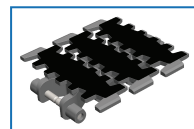


Item Code	Material	Colour	Weight	Supply
ML2 CR 3	POM	White	** kg/roll	3m/roll
ML2 CR 3A	Anti-Static	Black	** kg/roll	3m/roll
ML2 CR 3K	POM-Kevlar	Yellow	** kg/roll	3m/roll

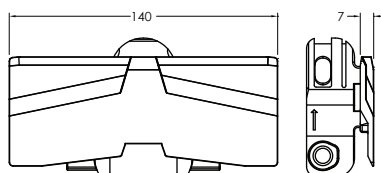


Flocked Chain

- Suitable for scratch sensitive material.
- Flock colour : Grey.
- Accumulation possible for light product only.
- Sticker type only.

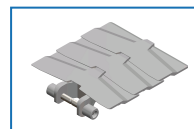


Item Code	Material	Colour	Weight	Supply
ML2 CL 5	POM	White	12.5 kg/roll	5m/roll



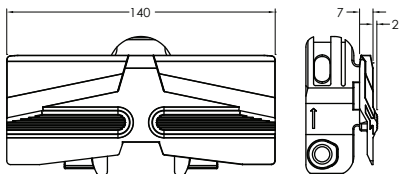
Safety Chain

- Suitable for conveyor configuration with incline/decline up to 5°.
- Accumulation possible.



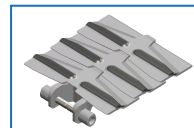
Item Code	Material	Colour	Weight	Supply
ML2 CP 5S	POM	White	12.4 kg/roll	5m/roll

Chains ML2 (Continued)



Safety Friction Chain

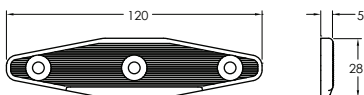
- Suitable for conveyor configuration with incline/decline up to 25°.
- Friction material : TPE (grey).
- Accumulation not possible.
- PP chain material working tension is less than POM, please refer to technical reference.



Item Code	Material	Colour	Weight	Supply
ML2 CF 5S	PP	White	12.4 kg/roll	5m/roll

Chains Top Replacement ML2

Insert Friction Pad



Item Code	Material	Colour	Weight	Supply
ML2 FP	TPE	Grey	0.01 kg/roll	10 pcs/pkt

Chain Accessories ML2

Lubricant For Chain



Silicone-based lubricant,
400ml

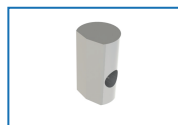
Item Code	Weight	Supply
MA SL	0.35 kg	1 pc

Stainless Steel Pin



Item Code	Weight	Supply
ML2 PN M4x73	0.07 kg	10 pcs/pkt

Chain Pivot



Item Code	Weight	Supply
ML2 PV	0.07 kg	10 pcs/pkt

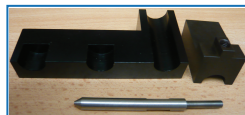
Chain Pin Insertion Tool



Chain pin insertion tool
shown without attachment
& specific drive pin

Item Code	Weight	Supply
TR CP 1	1.2 kg	1 pc

Attachment For Chain Tool

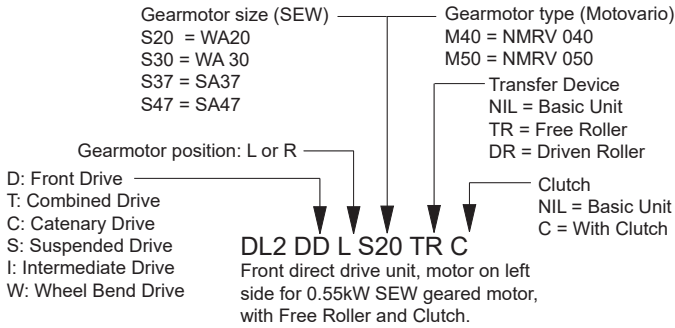


Chain attachment & drive pin

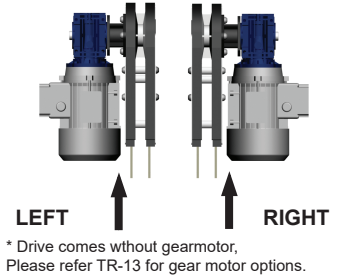
Item Code	Weight	Supply
ML2 AC	0.3 kg	1 set

Drive Units DL2

Item Code Guideline For Drive Units

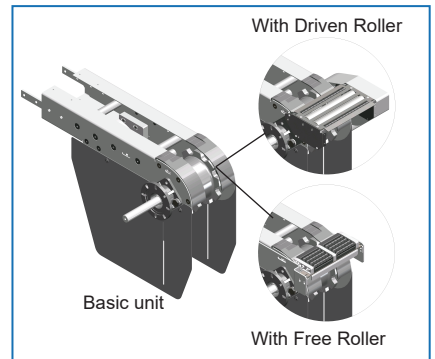
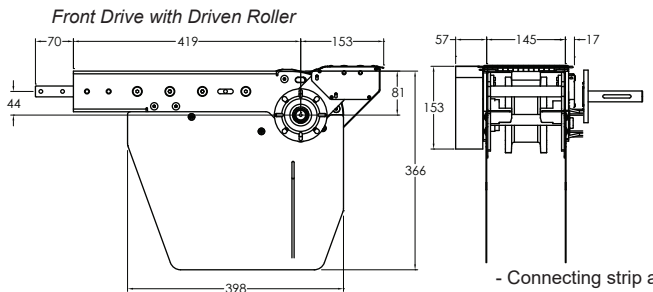
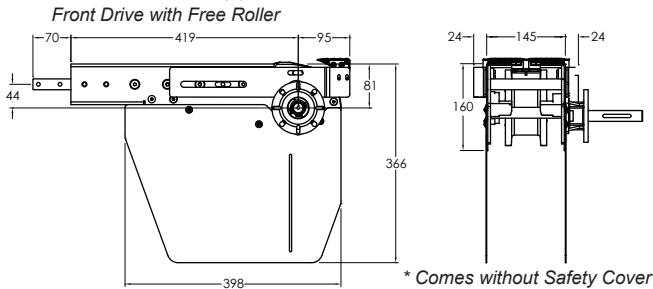
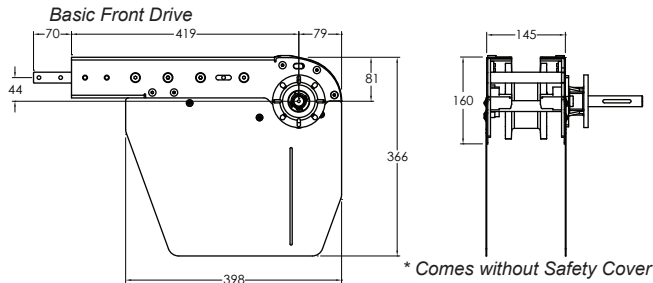


Motor Orientation Guideline



eg. Code for Basic unit; DL2 DT R M50 => Combined drive unit, motor on right side for Motovario NMRV 050 geared motor.

Front Drive Unit



* Comes without Safety Cover
 - Driven Roller speed is approximately 10% higher than conveyor speed.

Effective track length: 1.16m
 Traction force: 1200N

- Connecting strip and screw included.

Note:

- Safety Cover comes as an option.
- Recommended maximum chain elongation is 366mm from top conveyor and chain slack.
- Refer TR15 for chain effective track length calculation.
- Cleated Chain is not possible to use on drive with Free Roller or Driven Roller.

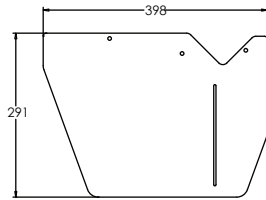
Item Code	Weight	Supply
DL2 DD R/L S/M	6.4 kg	1 unit
DL2 DD R/L S/M TR	8.1 kg	1 unit
With free roller		
DL2 DD R/L S/M DR	9.9 kg	1 unit
With driven roller		

Please consult MODU representative for further information and assistance.

Units: Dimension (mm)

Drive Units DL2 (Continued)

Safety Cover for Front Drive

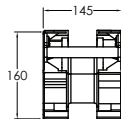
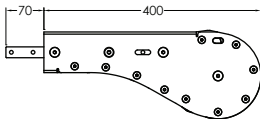


- Material : Stainless Steel

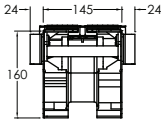
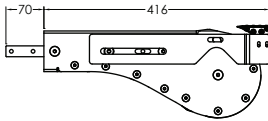
Item Code	Weight	Supply
DSC 268	1.8 kg	2 pcs/set

Idler End

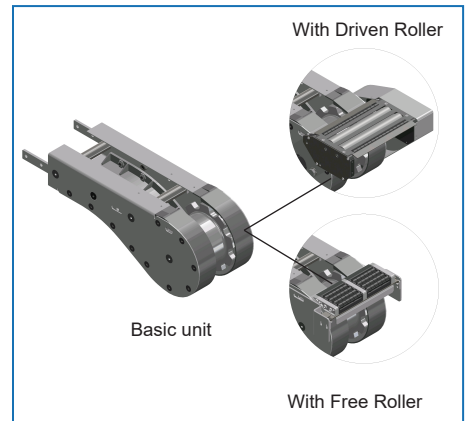
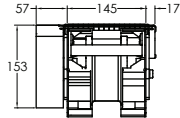
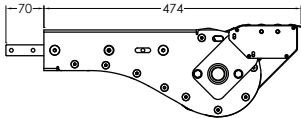
Basic Idler End



Idler End with Free Roller



Idler End with Driven Roller *(Right)



- Driven Roller speed is approximately 10% higher than conveyor speed.

Item Code	Weight	Supply
DL2 IE 400	6.7 kg	1 unit
DL2 IE 400 TR With free roller	7.0 kg	1 unit
DL2 IE 400 DR With driven roller	8.5 kg	1 unit

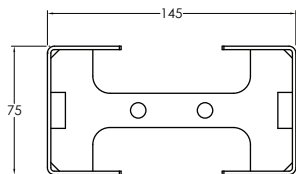
Effective track length: 1.02m

- Connecting strip and set screw included.

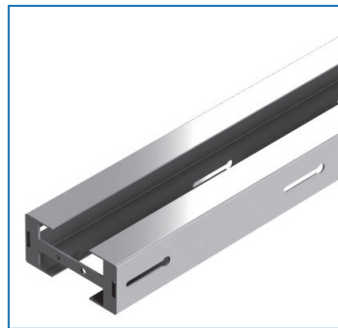
Note:

- Cleated Chain not suitable for Driven Roller & Free Roller.

Conveyor Beam DL2



Item Code	Weight	Supply
DL2 CB 2.4	18.9 kg	2.4 m



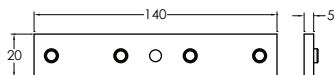
Accessories ML2

Slide Rail



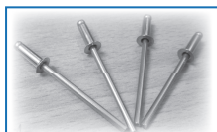
Item Code	Material	Colour	Weight	Supply
MA2 SR 25	HDPE	Pure White	2.8 kg/roll	25m/roll
MA2 SR 25A	Anti-Static	Grey	2.8 kg/roll	25m/roll
MA2 SR 25U	UHMW-PE	Semi-Transparent White	3.5 kg/roll	25m/roll

Connecting Strip



Item Code	Weight	Supply
DA CS 20x140	1.5 kg	10 pcs/pkt

- 4 pcs M8 set screw included.



Blind Rivet

Item Code	Weight	Supply
DA RB 3.2x9	0.02 kg	100 pcs/pkt

Material: Stainless Steel



Slide Rail Cutter

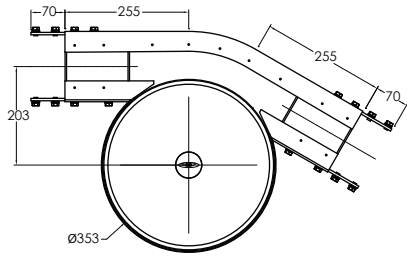
Item Code	Weight	Supply
MA SC	0.5 kg	1 pc



Slide Rail Mounting Tool

Item Code	Weight	Supply
MX2 SRA	0.4 kg	1 pc

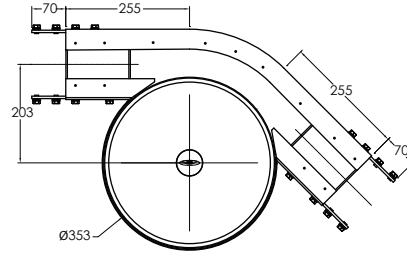
Horizontal Wheel Bends DL2



Wheel Bend, 30°

Item Code	Weight	Supply
DL2 BW 30R200	6.0 kg	1 set

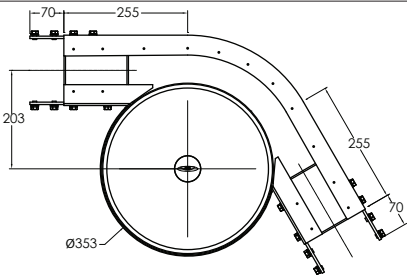
Effective track length:
0.6m 1-way (1.2m 2-way)
Tolerance: $\pm 2^\circ$
- Connecting strip and screw included.



Wheel Bend, 45°

Item Code	Weight	Supply
DL2 BW 45R200	6.1 kg	1 set

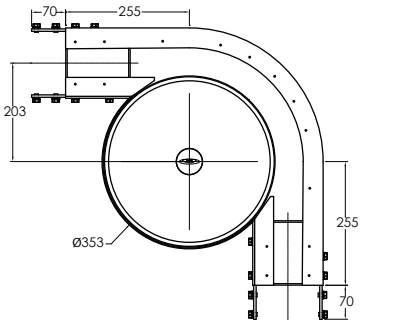
Effective track length:
0.66m 1-way (1.32m 2-way)
Tolerance: $\pm 2^\circ$
- Connecting strip and screw included.



Wheel Bend, 60°

Item Code	Weight	Supply
DL2 BW 60R200	6.6 kg	1 set

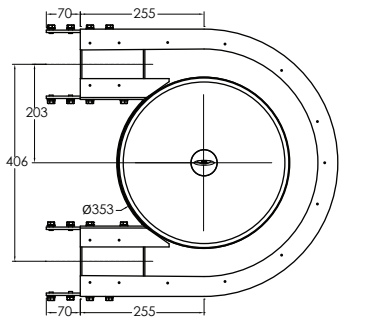
Effective track length:
0.71m 1-way (1.42m 2-way)
Tolerance: $\pm 2^\circ$
- Connecting strip and screw included.



Wheel Bend, 90°

Item Code	Weight	Supply
DL2 BW 90R200	7.0 kg	1 set

Effective track length:
0.81m 1-way (1.62m 2-way)
Tolerance: $\pm 2^\circ$
- Connecting strip and screw included.



Wheel Bend, 180°

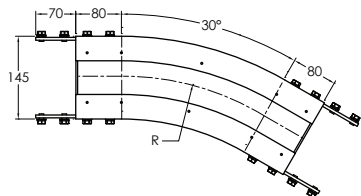
Item Code	Weight	Supply
DL2 BW 180R200	8.4 kg	1 set

Effective track length:
1.13m 1-way (2.26m 2-way).
Tolerance: $\pm 2^\circ$
- Connecting strip and screw included.

Please consult MODU representative for further information and assistance.

Units: Dimension (mm)

Horizontal Plain Bends DL2



Horizontal Plain Bend, 30°

Item Code	R	Weight	Supply
DL2 BP 30R500	500 mm	2.2 kg	1 set
DL2 BP 30R700	700 mm	2.8 kg	1 set
DL2 BP 30R1000	1000 mm	3.6 kg	1 set

Effective track length:

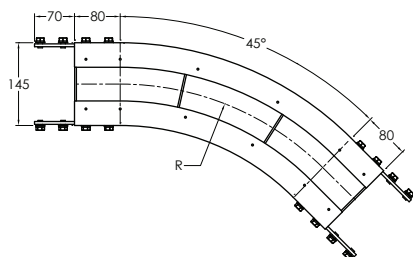
R500: 0.42m 1-way (0.84m 2-way)

R700: 0.53m 1-way (1.06m 2-way)

R1000: 0.68m 1-way (1.36m 2-way).

Tolerance: $\pm 2^\circ$ & Radius: $\pm 10\text{mm}$

- Connecting strip and screw included.



Horizontal Plain Bend, 45°

Item Code	R	Weight	Supply
DL2 BP 45R500	500 mm	2.9 kg	1 set
DL2 BP 45R700	700 mm	3.7 kg	1 set
DL2 BP 45R1000	1000 mm	4.9 kg	1 set

Effective track length:

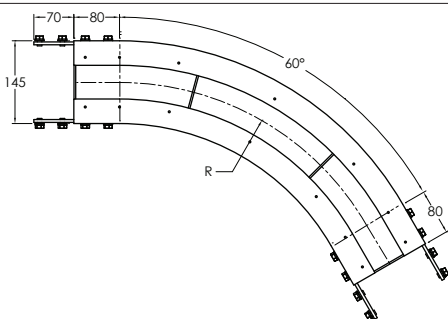
R500: 0.55m 1-way (1.10m 2-way)

R700: 0.71m 1-way (1.42m 2-way)

R1000: 0.95m 1-way (1.90m 2-way)

Tolerance: $\pm 2^\circ$ & Radius: $\pm 10\text{mm}$

- Connecting strip and screw included.



Horizontal Plain Bend, 60°

Item Code	R	Weight	Supply
DL2 BP 60R500	500 mm	3.6 kg	1 set
DL2 BP 60R700	700 mm	4.6 kg	1 set
DL2 BP 60R1000	1000 mm	6.1 kg	1 set

Effective track length:

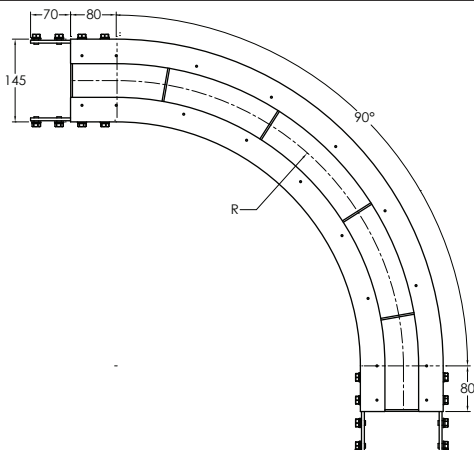
R500: 0.68m 1-way (1.36m 2-way)

R700: 0.73m 1-way (1.46m 2-way)

R1000: 1.21m 1-way (2.42m 2-way)

Tolerance: $\pm 2^\circ$ & Radius: $\pm 10\text{mm}$

- Connecting strip and screw included.



Horizontal Plain Bend, 90°

Item Code	R	Weight	Supply
DL2 BP 90R500	500 mm	4.9 kg	1 set
DL2 BP 90R700	700 mm	6.5 kg	1 set
DL2 BP 90R1000	1000 mm	8.8 kg	1 set

Effective track length:

R500: 0.95m 1-way (1.90m 2-way)

R700: 1.26m 1-way (2.52m 2-way)

R1000: 1.73m 1-way (3.26m 2-way)

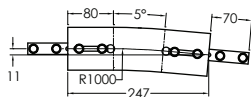
Tolerance: $\pm 2^\circ$ & Radius: $\pm 10\text{mm}$

- Connecting strip and screw included.

Please consult MODU representative for further information and assistance.

Units: Dimension (mm)

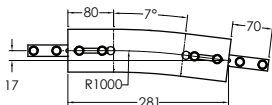
Vertical Bends DL2



Vertical Bend, 5°

Item Code	Weight	Supply
DL2 BV 5R1000	1.3 kg	1 set

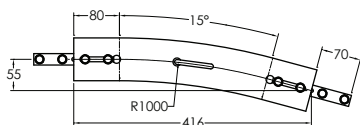
Effective track length:
 R1000: 0.25m 1-way (0.5m 2-way)
 Tolerance: $\pm 2^\circ$ & Radius: ± 10 mm
 - Connecting strip and screw included.



Vertical Bend, 7°

Item Code	Weight	Supply
DL2 BV 7R1000	1.5 kg	1 set

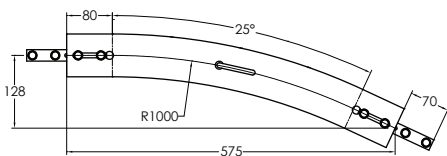
Effective track length:
 R1000: 0.28m 1-way (0.56m 2-way)
 Tolerance: $\pm 2^\circ$ & Radius: ± 10 mm
 - Connecting strip and screw included.



Vertical Bend, 15°

Item Code	Weight	Supply
DL2 BV 15R1000	2.2 kg	1 set

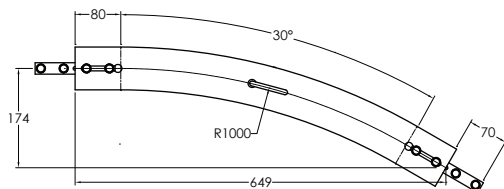
Effective track length:
 R1000: 0.42m 1-way (0.84m 2-way)
 Tolerance: $\pm 2^\circ$ & Radius: ± 10 mm
 - Connecting strip and screw included.



Vertical Bend, 25°

Item Code	Weight	Supply
DL2 BV 25R1000	3.1 kg	1 set

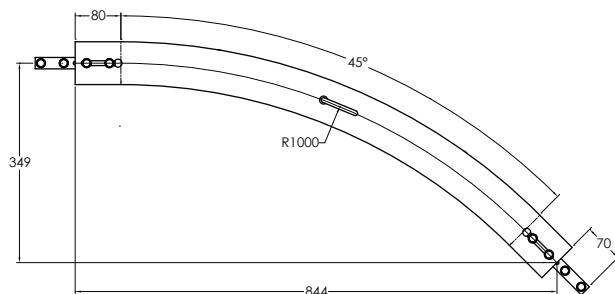
Effective track length:
 R1000: 0.60m 1-way (1.20m 2-way)
 Tolerance: $\pm 2^\circ$ & Radius: ± 10 mm
 - Connecting strip and screw included.



Vertical Bend, 30°

Item Code	Weight	Supply
DL2 BV 30R1000	3.5 kg	1 set

Effective track length:
 R1000: 0.68m 1-way (1.36m 2-way)
 Tolerance: $\pm 2^\circ$ & Radius: ± 10 mm
 - Connecting strip and screw included.

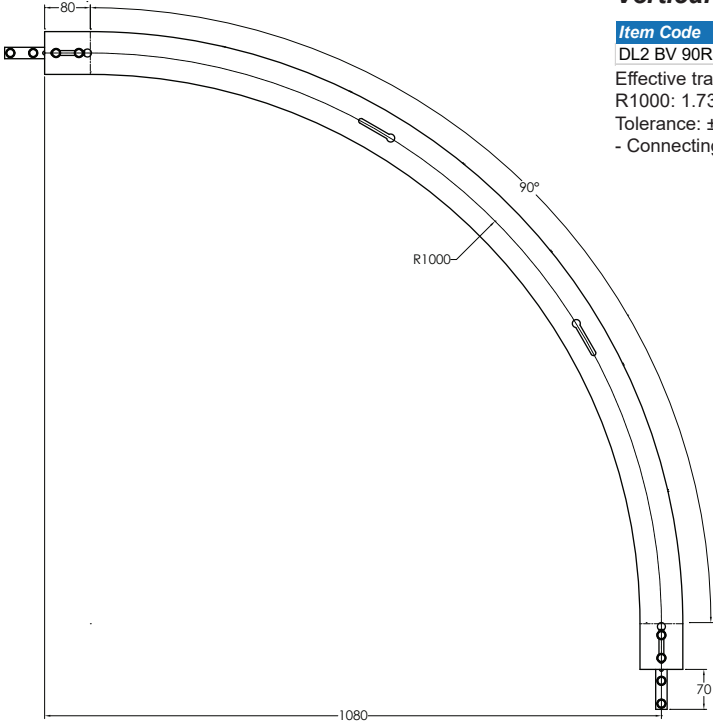


Vertical Bend, 45°

Item Code	Weight	Supply
DL2 BV 45R1000	4.8 kg	1 set

Effective track length:
 R1000: 0.95m 1-way (1.90m 2-way)
 Tolerance: $\pm 2^\circ$ & Radius: ± 10 mm
 - Connecting strip and screw included.

Vertical Bends DL2 (Continued)



Vertical Bend, 90°

Item Code	Weight	Supply
DL2 BV 90R1000	8.8 kg	1 set

Effective track length:
R1000: 1.73m 1-way (3.46m 2-way)
Tolerance: $\pm 2^\circ$ & Radius: $\pm 10\text{mm}$
- Connecting strip and screw included.

* Non-Standard Vertical Bend only available on PE and Stainless Steel.