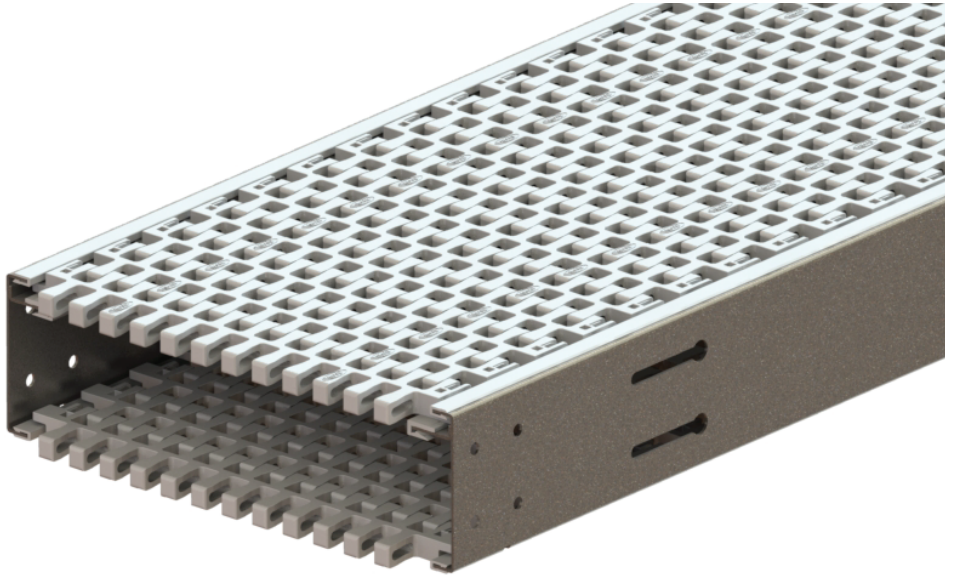


# Conveyor System DT2



## Description

315 mm width thermoplastic belt with aluminium frame conveyor system

## Examples of application industries

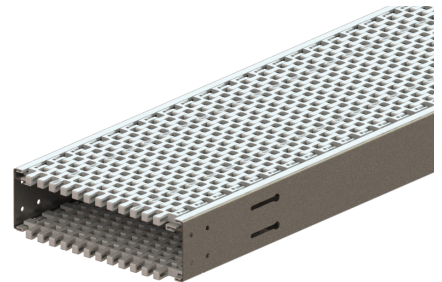
Personal Products, Pharmaceutical & Chemical Industry, Automotive & Machined Parts Industry, Food & Packaging Industry, Electrical & Electronic Industry, Paper Converting Industry and Optical Industry

## Technical characteristics

Chain Width		315 mm
Chain Pitch		45 mm
Chain Weight		3.80 kg/m
Chain Maximum Working Tension	With Bend	1400N
	Without Bend	1500N
Max Product Weight*		30 kg
Total Load*		300 Kg
Working Temperature*		-10°C to 60°C
Max Conveyor Length*		30m
Max Speed*		50 m/min
Drive Unit Capacity		1500 N
Item Width*		<500 mm

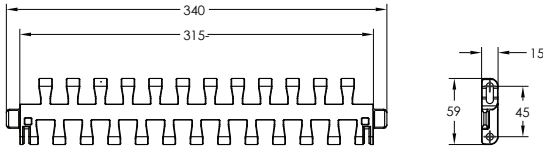
\* Actual limit may vary according to conveyor layout and application.

\* Maximum total off 90° bends in one conveyor.



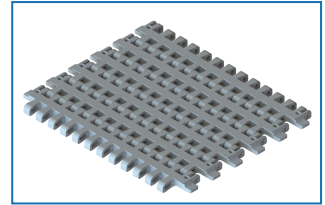
## Chains MT2

### Plastic Curve Belt

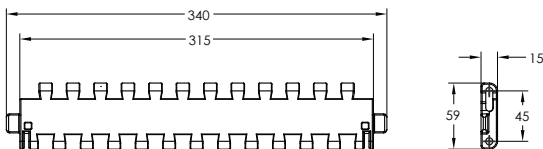


- 8.5mm belt gap.
- Suitable for conveyor configuration with incline/decline up to 5°.
- Accumulation possible.

Item Code	Material	Colour	Weight	Supply
MT2 ST CP 5	POM	White	19.0 kg/roll	5m/roll

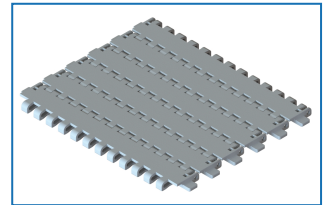


### Plastic Straight Belt

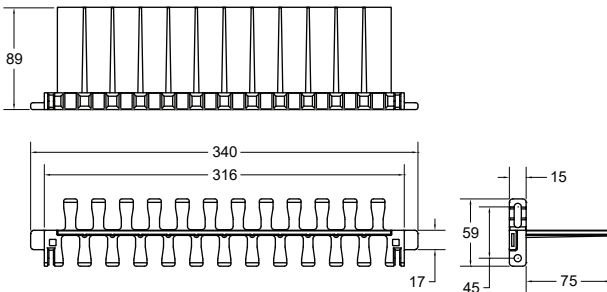


- 0mm belt gap.
- Suitable for conveyor configuration with incline/decline up to 5°.
- Accumulation possible.

Item Code	Material	Colour	Weight	Supply
MT2 ZG CP 5	POM	White	20.6 kg/roll	5m/roll

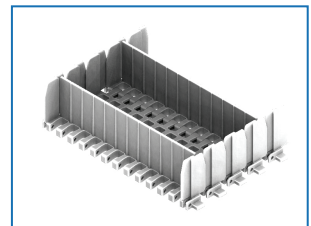


### Plastic Cleated Belt



- Required for vertical or steep inclined / declined conveyor.
- Accumulation not possible.
- Not suitable to be use with Combined and Catenary Drive.
- Please specify pitch between cleat for ordering (eg. MT2 ST CC 3x15P 3p = Every 3rd link to be cleated).
- \*\*Please consult MODU representative for actual Chain weight.

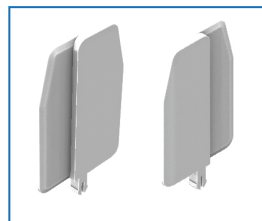
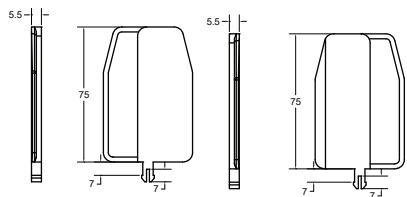
Item Code	Material	Colour	Weight	Supply
MT2 ST CC 3	POM	White	-	3m/roll



Please consult MODU representative for further information and assistance.

Units: Dimension (mm)

### Side Guard L-R



Item Code	Material	Colour	Weight	Supply
MT2 CLP G-75	POM	White	1.7kg/pack	50pcs/pkt

### Chain Accessories MT2

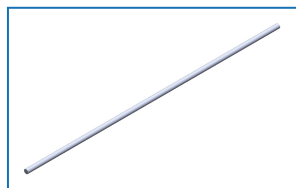
#### Lubricant For Chain



Item Code	Weight	Supply
MA SL	0.35 kg	1 pc

Silicone-based lubricant, 400ml

#### Chain Pin



Item Code	Material	Colour	Weight	Supply
MT2 PC	POM	White	0.12kg	10pcs/pkt

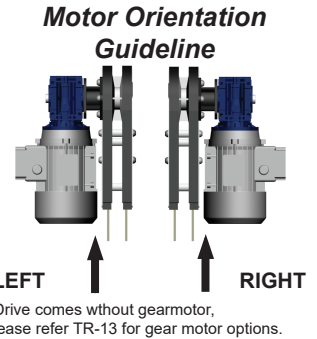
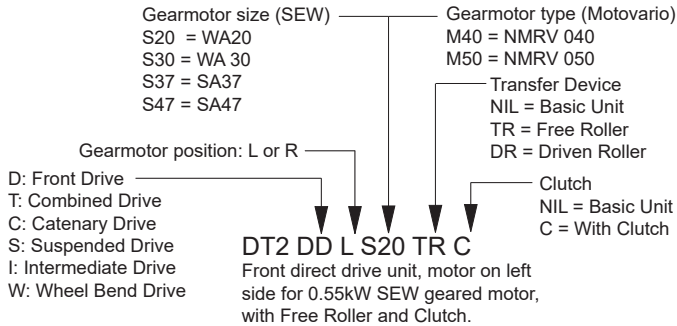
#### Belt Lock



Item Code	Material	Colour	Weight	Supply
MT2 BL	POM	White	0.07kg	10pcs/pkt

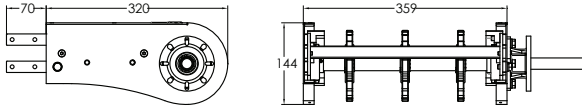
## Drive Units DT2

### Item Code Guideline For Drive Units



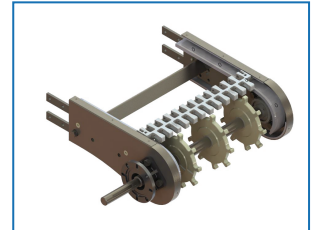
eg. Code for Basic unit; **DT2 DT R M50** => Combined drive unit, motor on right side for Motovario NMRV 050 geared motor.

### Front Drive Unit

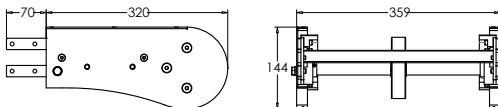


Item Code	Weight	Supply
DT2 DD R/L S/M	9.4 kg	1 unit

- Effective track length: 0.8m  
 Traction force: 1500N  
 - Connecting strip and set screw included.  
 Note:  
 - Refer TR15 for chain effective track length calculation.

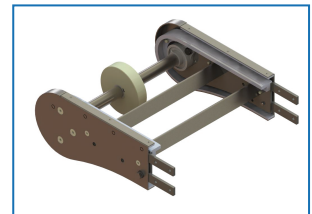


### Idler End



Item Code	Weight	Supply
DT2 IE 320	8.3 kg	1 unit

- Effective track length: 0.8m  
 - Connecting strip and set screw included.  
 Note:  
 - Refer TR15 for chain effective track length calculation.

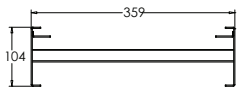


Please consult MODU representative for further information and assistance.

Units: Dimension (mm)

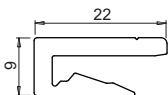


## Conveyor Beam DT2



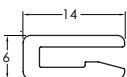
Item Code	Weight	Supply
DT2 CB 2.4	18.5 kg	2.4 m

## Accessories DT2



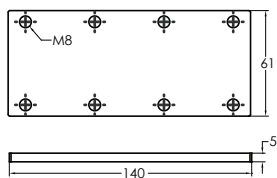
### Slide Rail

Item Code	Material	Colour	Weight	Supply
MA2 SR 25	HDPE	Pure White	2.8 kg/roll	25m/roll
MA2 SR 25A	Anti-Static	Grey	2.8 kg/roll	25m/roll
MA2 SR 25U	UHMW-PE	Semi-Transparent White	3.5 kg/roll	25m/roll



### Slide Rail

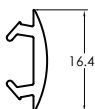
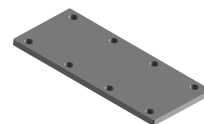
Item Code	Material	Colour	Weight	Supply
MS SR 25	HDPE	Pure White	1.2 kg/roll	25m/roll
MS SR 25A	Anti-Static	Grey	1.2 kg/roll	25m/roll
MS SR 25U	UHMW-PE	Semi-Transparent White	2.7 kg/roll	25m/roll
MS SR 25P	PVDF	Natural white	2.7 kg/roll	25m/roll



### Connecting Strip

Item Code	Weight	Supply
DA CS 61X140	4.5 kg	10 pcs/pkt

- 8 pcs M8 set screw included.



### T-Slot Cover

Item Code	Material	Colour	Weight	Supply
MB SC 25T	TPE	Grey	1.5 kg/roll	25m/roll
MB SC 25P	PVC	Light Grey	1.3 kg/roll	25m/roll



### Screw

Item Code	Weight	Supply
MA RS 6.5	0.02 kg	50 pcs/pkt



### Rivet

Item Code	Weight	Supply
MA RR 3	0.02 kg	50 pcs/pkt

Material: Brass Nickel plated (3mm)



### Slide Rail Assembling Tool

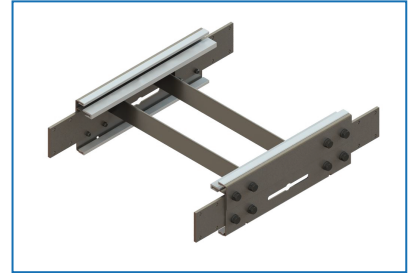
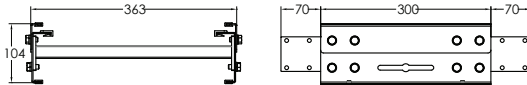
Item Code	Weight	Supply
MT2 SRA	0.4 kg	1 pc



### Slide Rail Cutter

Item Code	Weight	Supply
MA SC	0.5 kg	1 pc

## Chain Installation Section



Item Code	Weight	Supply
DT2 CIS 300	4.9 kg	1 Unit

- Connecting strip and set screw included.