

Stainless Steel Conveyor Guide DG



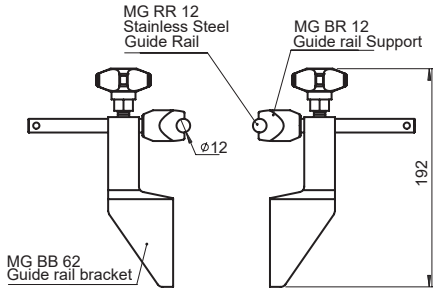
AP
TR
MS2
ML3
ML2
MX2
MT2
MR2
MG
MA
DS2
DM3
DL2
DX2
DT2
DR2
DF2
DG
DB
DA
SD
SE
TL
IM
MM

Please consult MODU representative for further information and assistance.

Units: Dimension (mm)

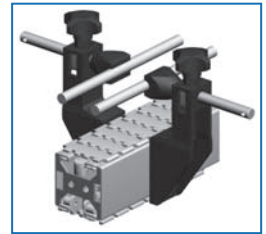
Stainless Steel Conveyor Guide DG

Guide Assembly - Type 1

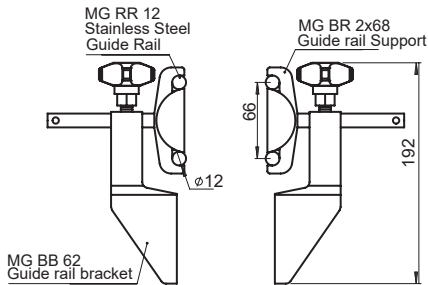


- Supply:**
- Items are supplied individually.
- Features:**
- Width adjustable by single knob

Series	Width Maximum	Item Code
DS2	60	DS G1
DM3	80	DM G1
DL2	140	DL G1
DX2	220	DX G1

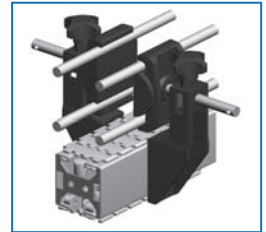


Guide Assembly - Type 2



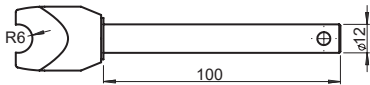
- Supply:**
- Items are supplied individually.
- Features:**
- Width adjustable by single knob

Series	Width Maximum	Item Code
DS2	60	DS G2
DM3	80	DM G2
DL2	140	DL G2
DX2	220	DX G2



Guide Rail Accessories

Guide Rail Support

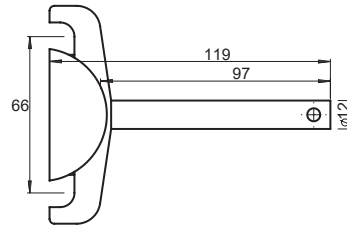


- Single clamp for 12mm diameter shaft.



Item Code	Weight	Supply
MG BR 12	0.1 kg	1 pc

Guide Rail Support

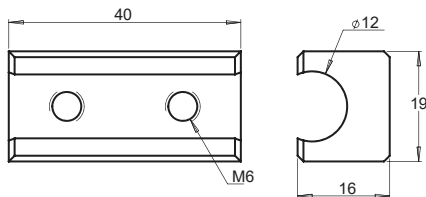


- Double clamp for 12mm diameter shaft.



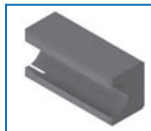
Item Code	Weight	Supply
MG BR 2x68	0.2 kg	1 pc

Guide Rail Connector

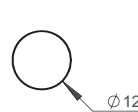


- Set screw included

Item Code	Weight	Supply
DG BB 12	0.2 kg	1 pc



Stainless Steel Guide Rail



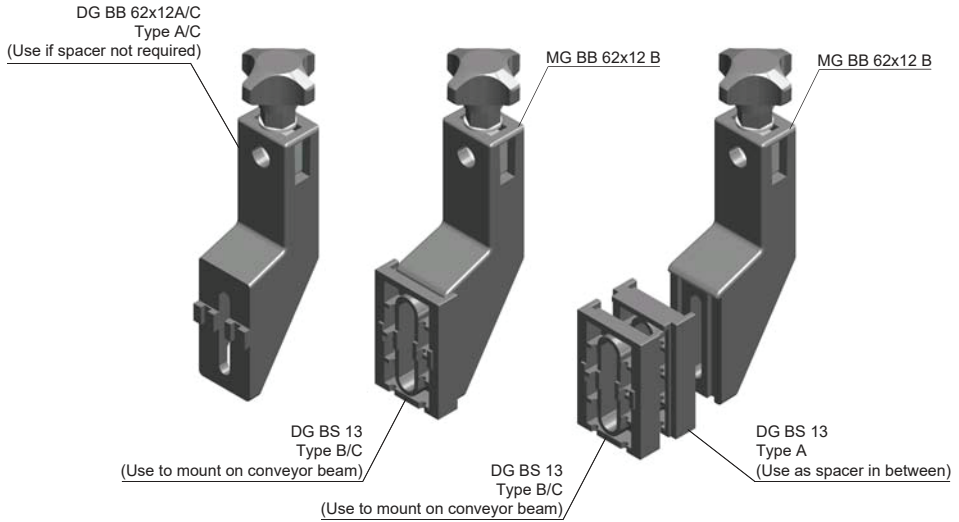
Item Code	Weight	Supply
MG RR 12	2.7 kg	3 m

Please consult MODU representative for further information and assistance.

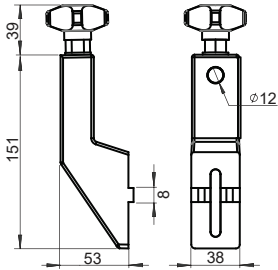
Units: Dimension (mm)

Guide Rail Accessories (continued)

Guide Rail Bracket



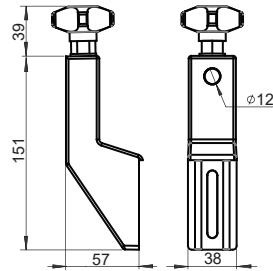
Guide Rail Bracket Type A/C



- Type A for DM3, DL2 & DX2
- Type C for DS2

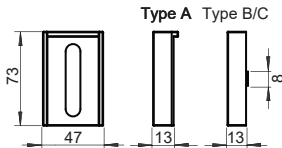
Item Code	Weight	Supply
DG BB 62x12 A/C	0.25 kg	1 pc

Guide Rail Bracket Type B



Item Code	Weight	Supply
MG BB 62x12 B	0.25 kg	1 pc

Spacer Type A/B/C



- Type A use to increase width by $n \times 13\text{mm}$ (where n=no. of spacer use)
- Type B for DM3, DL2 & DX2
- Type C for DS2

Item Code	Weight	Supply
DG BS 13 A/B/C	0.04 kg	1 pc

Please consult MODU representative for further information and assistance.

Units: Dimension (mm)

AP TR MS2 MM3 ML2 MX2 MR2 MT2 MG MB MA DS2 DL2 DM3 DX2 DT2 DR2 DF2 DG DB DA SD SE TL IM MM

