

Conveyor System MT2



Description

315 mm width thermoplastic belt with aluminium frame conveyor system

Examples of application industries

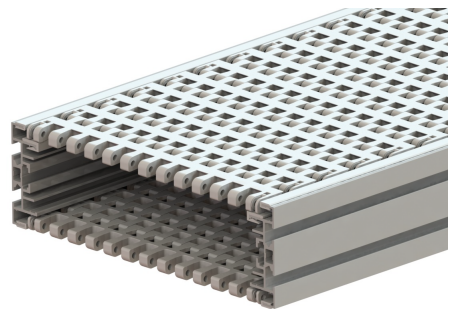
Personal Products, Pharmaceutical & Chemical Industry, Automotive & Machined Parts Industry, Food & Packaging Industry, Electrical & Electronic Industry, Paper Converting Industry and Optical Industry

Technical characteristics

Chain Width		315 mm
Chain Pitch		45 mm
Chain Weight		3.8kg/m
Chain Maximum	With Bend	1400N
Working Tension	Without Bend	1500N
Max Product Weight*		30 kg
Total Load*		300 Kg
Working Temperature*		-10°C to 60°C
Max Conveyor Length*		30m
Max Speed*		50 m/min
Drive Unit Capacity		1500 N
Item Width*		<500 mm

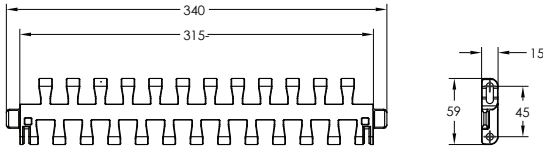
* Actual limit may vary according to conveyor layout and application.

* Maximum total off 90° bends in one conveyor.



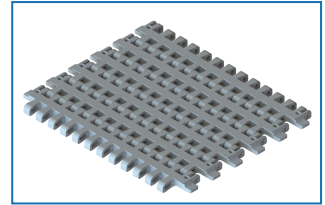
Chains MT2

Plastic Curve Belt

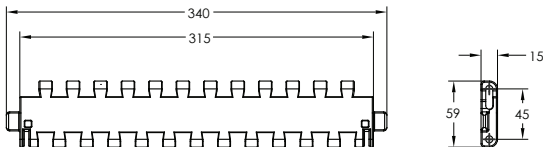


- 8.5mm belt gap.
- Suitable for conveyor configuration with incline/decline up to 5°.
- Accumulation possible.

Item Code	Material	Colour	Weight	Supply
MT2 ST CP 5	POM	White	19.0 kg/roll	5m/roll

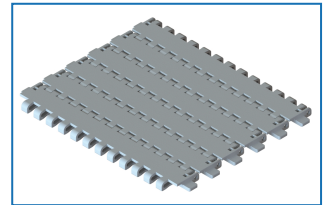


Plastic Straight Belt

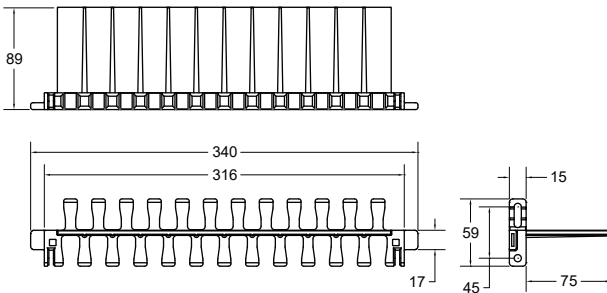


- 0mm belt gap.
- Suitable for conveyor configuration with incline/decline up to 5°.
- Accumulation possible.

Item Code	Material	Colour	Weight	Supply
MT2 ZG CP 5	POM	White	20.6 kg/roll	5m/roll

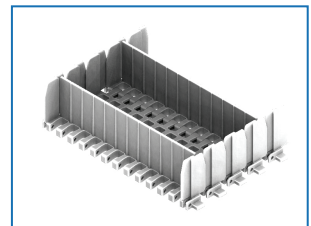


Plastic Cleated Belt



- Required for vertical or steep inclined / declined conveyor.
- Accumulation not possible.
- Not suitable to be use with Combined and Catenary Drive.
- Please specify pitch between cleat for ordering (eg. MT2 ST CC 3x15P 3p = Every 3rd link to be cleated).
- **Please consult MODU representative for actual Chain weight.

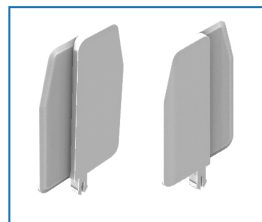
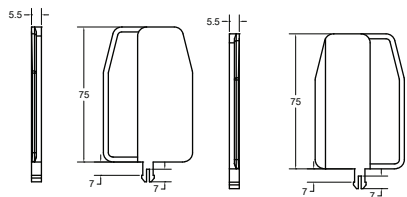
Item Code	Material	Colour	Weight	Supply
MT2 ST CC 3	POM	White	-	3m/roll



Please consult MODU representative for further information and assistance.

Units: Dimension (mm)

Side Guard L-R



Item Code	Material	Colour	Weight	Supply
MT2 CLP G-75	POM	White	1.7kg/pack	50pcs/pkt

Chain Accessories MT2

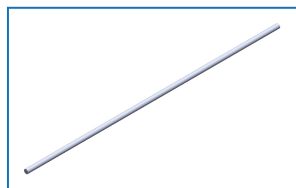
Lubricant For Chain



Item Code	Weight	Supply
MA SL	0.35 kg	1 pc

Silicone-based lubricant, 400ml

Chain Pin



Item Code	Material	Colour	Weight	Supply
MT2 PC	POM	White	0.12kg	10pcs/pkt

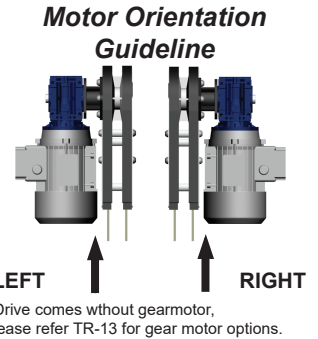
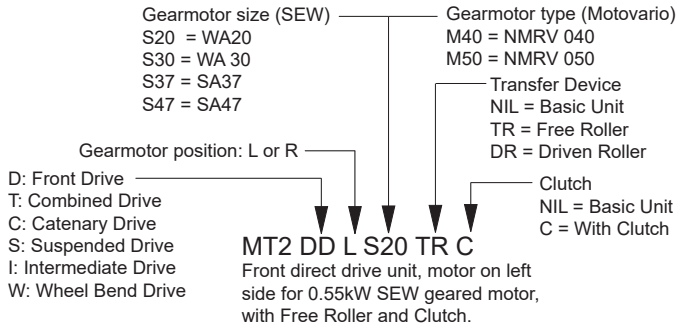
Belt Lock



Item Code	Material	Colour	Weight	Supply
MT2 BL	POM	White	0.07kg	10pcs/pkt

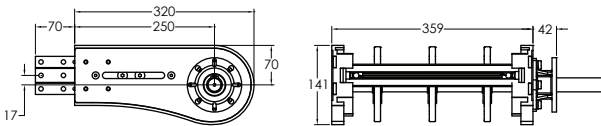
Drive Units MT2

Item Code Guideline For Drive Units



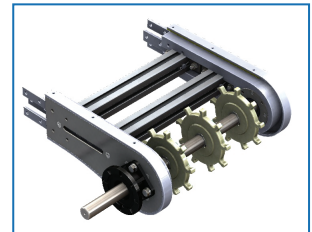
eg. Code for Basic unit; **MT2 DT R M50** => Combined drive unit, motor on right side for Motovario NMRV 050 geared motor.

Front Drive Unit

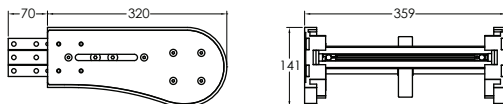


Item Code	Weight	Supply
MT2 DD R/L S/M	9.4 kg	1 unit

Effective track length: 0.8m
 Traction force: 1500N
 - Connecting strip and set screw included.
 Note:
 - Refer TR15 for chain effective track length calculation.

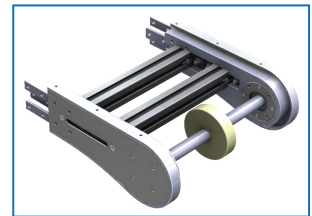


Idler End



Item Code	Weight	Supply
MT2 IE 320	8.3 kg	1 unit

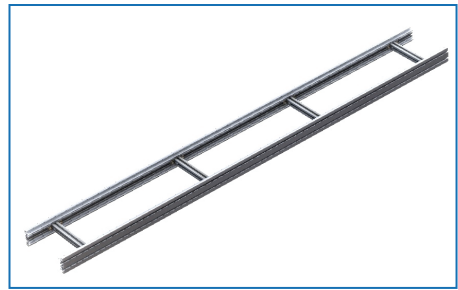
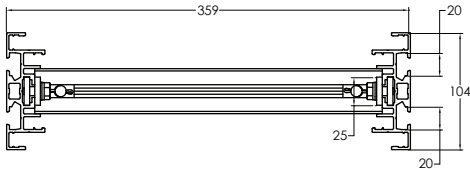
Effective track length: 0.8m
 - Connecting strip and set screw included.
 Note:
 - Refer TR15 for chain effective track length calculation.



Please consult MODU representative for further information and assistance.

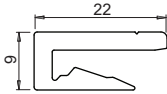
Units: Dimension (mm)

Conveyor Beam MT2



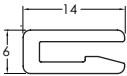
Item Code	Weight	Supply
MT2 CB 3	18.5 kg	3 m

Accessories MT2



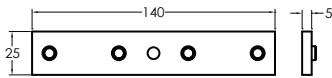
Slide Rail

Item Code	Material	Colour	Weight	Supply
MA2 SR 25	HDPE	Pure White	2.8 kg/roll	25m/roll
MA2 SR 25A	Anti-Static	Grey	2.8 kg/roll	25m/roll
MA2 SR 25U	UHMW-PE	Semi-Transparent White	3.5 kg/roll	25m/roll



Slide Rail

Item Code	Material	Colour	Weight	Supply
MS SR 25	HDPE	Pure White	1.2 kg/roll	25m/roll
MS SR 25A	Anti-Static	Grey	1.2 kg/roll	25m/roll
MS SR 25U	UHMW-PE	Semi-Transparent White	2.7 kg/roll	25m/roll
MS SR 25P	PVDF	Natural white	2.7 kg/roll	25m/roll



Connecting Strip

Item Code	Weight	Supply
MA CS 20x140	1.5 kg	10 pcs/pkt
MA CS 25x140	1.5 kg	10 pcs/pkt

- 4 pcs M8 set screw included.



T-Slot Cover

Item Code	Material	Colour	Weight	Supply
MB SC 25T	TPE	Grey	1.5 kg/roll	25m/roll
MB SC 25P	PVC	Light Grey	1.3 kg/roll	25m/roll



Screw

Item Code	Weight	Supply
MA RS 6.5	0.02 kg	50 pcs/pkt



Rivet

Item Code	Weight	Supply
MA RR 3	0.02 kg	50 pcs/pkt

Material: Brass Nickel plated (3mm)



Slide Rail Assembling Tool

Item Code	Weight	Supply
MT2 SRA	0.4 kg	1 pc



Slide Rail Cutter

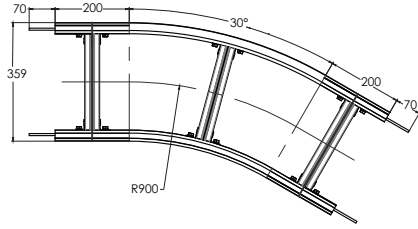
Item Code	Weight	Supply
MA SC	0.5 kg	1 pc

Please consult MODU representative for further information and assistance.

Units: Dimension (mm)

Horizontal Plain Bends MT2

Minimum Turning Radius is R900



Horizontal Plain Bend, 30°

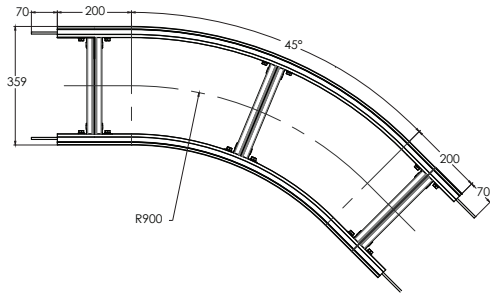
Item Code	R	Weight	Supply
MT2 BP 30R900	900 mm	7.2 kg	1 set

Effective track length:

R900: 0.87m 1-way (1.74m 2-way)

Tolerance: $\pm 2^\circ$ & Radius: ± 10 mm

- Connecting strip and set screw included.



Horizontal Plain Bend, 45°

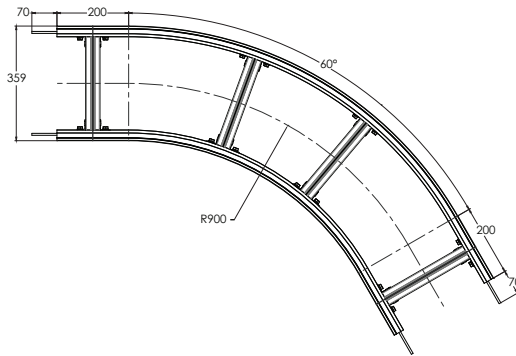
Item Code	R	Weight	Supply
MT2 BP 45R900	900 mm	8.3 kg	1 set

Effective track length:

R900: 1.11m 1-way (2.22m 2-way)

Tolerance: $\pm 2^\circ$ & Radius: ± 10 mm

- Connecting strip and set screw included.



Horizontal Plain Bend, 60°

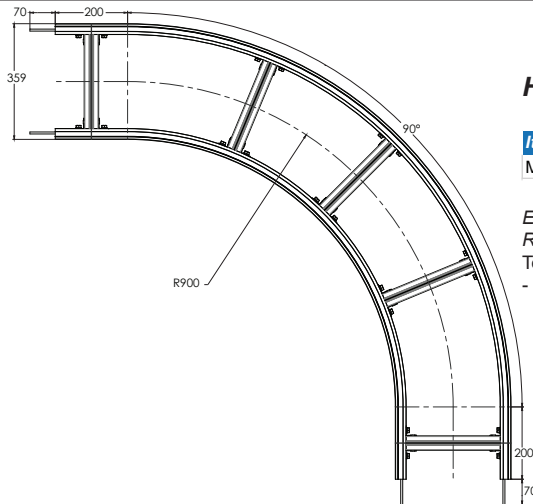
Item Code	R	Weight	Supply
MT2 BP 60R900	900 mm	10.2 kg	1 set

Effective track length:

R900: 1.35m 1-way (2.70m 2-way)

Tolerance: $\pm 2^\circ$ & Radius: ± 10 mm

- Connecting strip and set screw included.



Horizontal Plain Bend, 90°

Item Code	R	Weight	Supply
MT2 BP 90R900	900 mm	14.2 kg	1 set

Effective track length:

R900: 1.81m 1-way (3.62m 2-way)

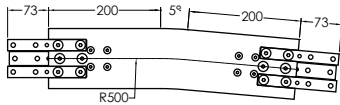
Tolerance: $\pm 2^\circ$ & Radius: ± 10 mm

- Connecting strip and set screw included.

Please consult MODU representative for further information and assistance.

Units: Dimension (mm)

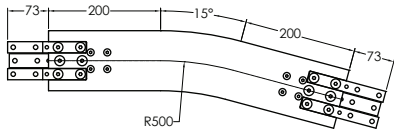
Vertical Bends MT2



Vertical Bend, 5°

Item Code	Weight	Supply
MT2 BV 5R500	5.6 kg	1 set

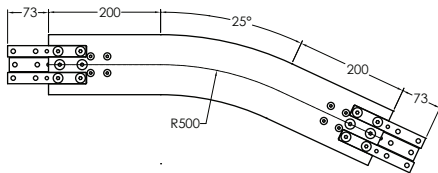
Effective track length:
 R500: 0.44m 1-way (0.88m 2-way)
 Tolerance: $\pm 2^\circ$ & Radius: $\pm 10\text{mm}$
 - Connecting strip and set screw included.



Vertical Bend, 15°

Item Code	Weight	Supply
MT2 BV 15R500	6.2 kg	1 set

Effective track length:
 R500: 0.53m 1-way (1.06m 2-way)
 Tolerance: $\pm 2^\circ$ & Radius: $\pm 10\text{mm}$
 - Connecting strip and set screw included.

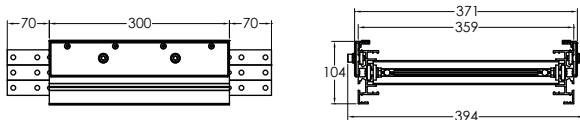


Vertical Bend, 25°

Item Code	Weight	Supply
MT2 BV 25R500	6.8 kg	1 set

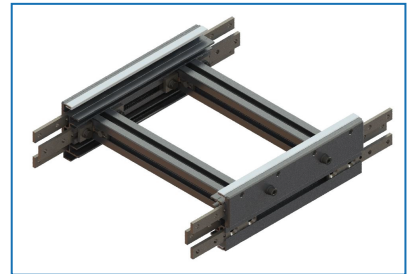
Effective track length:
 R500: 0.62m 1-way (1.24m 2-way)
 Tolerance: $\pm 2^\circ$ & Radius: $\pm 10\text{mm}$
 - Connecting strip and set screw included.

Chain Installation Section



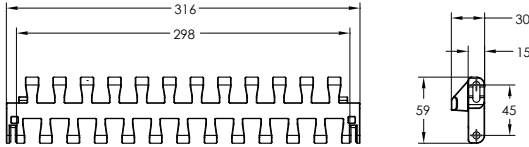
Item Code	Weight	Supply
MT2 CIS 300	4.9 kg	1 Unit

- Connecting strip and set screw included.

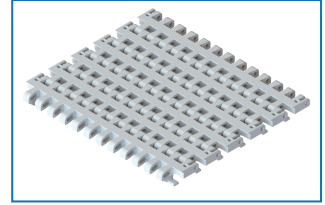


Chains MT2 (BT)

Plastic Curve Belt (Bottom Tab)



- 8.5mm belt gap.
- Suitable for conveyor configuration with incline/decline up to 5°.
- Accumulation possible.

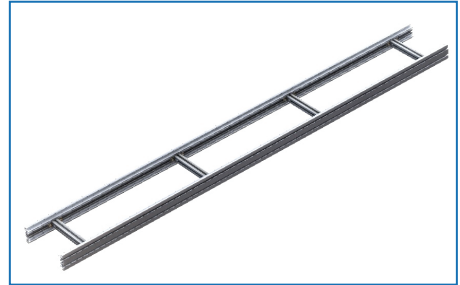


Item Code	Material	Colour	Weight	Supply
MT2 BT CP 5	POM	White	19.0 kg/roll	5m/roll

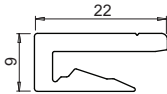
Conveyor Beam MT2 (BT)



Item Code	Weight	Supply
MT2 BT CB 3	18.5 kg	3 m

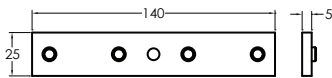


Accessories MT2



Slide Rail

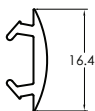
Item Code	Material	Colour	Weight	Supply
MA2 SR 25	HDPE	Pure White	2.8 kg/roll	25m/roll
MA2 SR 25A	Anti-Static	Grey	2.8 kg/roll	25m/roll
MA2 SR 25U	UHMW-PE	Semi-Transparent White	3.5 kg/roll	25m/roll



Connecting Strip

Item Code	Weight	Supply
MA CS 20x140	1.5 kg	10 pcs/pkt
MA CS 25x140	1.5 kg	10 pcs/pkt

- 4 pcs M8 set screw included.



T-Slot Cover

Item Code	Material	Colour	Weight	Supply
MB SC 25T	TPE	Grey	1.5 kg/roll	25m/roll
MB SC 25P	PVC	Light Grey	1.3 kg/roll	25m/roll



Screw

Item Code	Weight	Supply
MA RS 6.5	0.02 kg	50 pcs/pkt



Slide Rail Assembling Tool

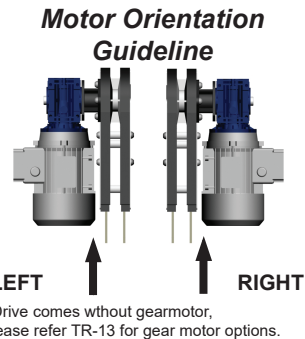
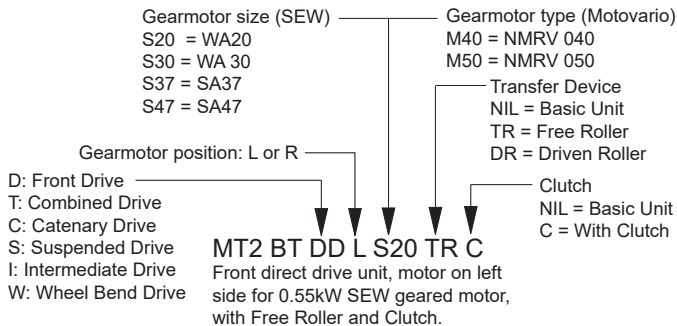
Item Code	Weight	Supply
MT2 SRA	0.4 kg	1 pc

Please consult MODU representative for further information and assistance.

Units: Dimension (mm)

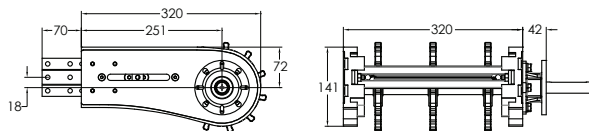
Drive Units MT2 (BT)

Item Code Guideline For Drive Units



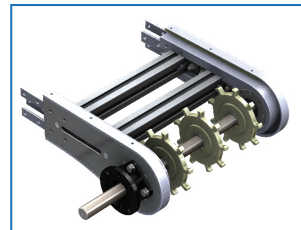
eg. Code for Basic unit; **MT2 BT DD R M50** => Front drive unit for bottom tab chain, motor on right side for Motovario NMRV 050 geared motor.

Front Drive Unit (BT)

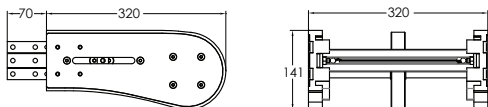


Item Code	Weight	Supply
MT2 BT DD R/L S/M	9.4 kg	1 unit

Effective track length: 0.8m
 Traction force: 1500N
 - Connecting strip and set screw included.
 Note:
 - Refer TR15 for chain effective track length calculation.

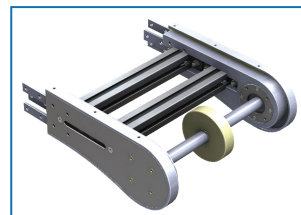


Idler End (BT)



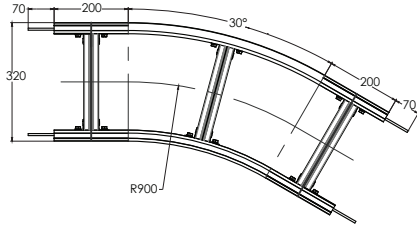
Item Code	Weight	Supply
MT2 BT IE 320	8.3 kg	1 unit

Effective track length: 0.8m
 - Connecting strip and set screw included.
 Note:
 - Refer TR15 for chain effective track length calculation.



Horizontal Plain Bends MT2 (BT)

Minimum Turning Radius is R900



Horizontal Plain Bend, 30°

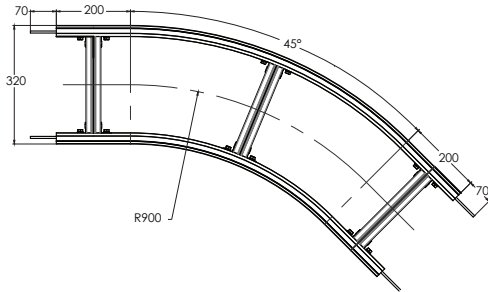
Item Code	R	Weight	Supply
MT2 BT BP 30R900	900 mm	7.2 kg	1 set

Effective track length:

R900: 0.87m 1-way (1.74m 2-way)

Tolerance: $\pm 2^\circ$ & Radius: ± 10 mm

- Connecting strip and set screw included.



Horizontal Plain Bend, 45°

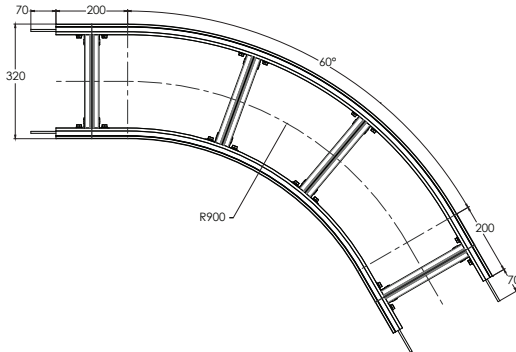
Item Code	R	Weight	Supply
MT2 BT BP 45R900	900 mm	8.3 kg	1 set

Effective track length:

R900: 1.11m 1-way (2.22m 2-way)

Tolerance: $\pm 2^\circ$ & Radius: ± 10 mm

- Connecting strip and set screw included.



Horizontal Plain Bend, 60°

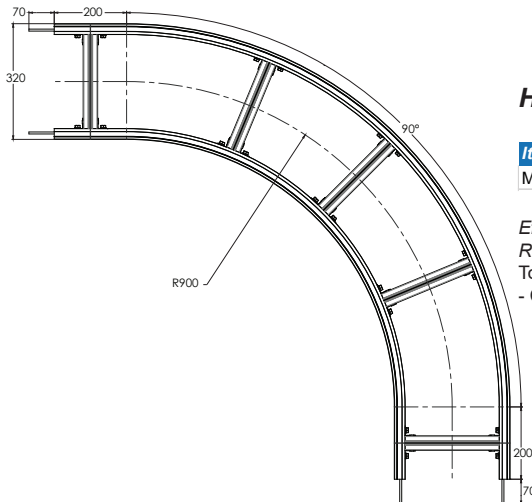
Item Code	R	Weight	Supply
MT2 BT BP 60R900	900 mm	10.2 kg	1 set

Effective track length:

R900: 1.35m 1-way (2.70m 2-way)

Tolerance: $\pm 2^\circ$ & Radius: ± 10 mm

- Connecting strip and set screw included.



Horizontal Plain Bend, 90°

Item Code	R	Weight	Supply
MT2 BT BP 90R900	900 mm	14.2 kg	1 set

Effective track length:

R900: 1.81m 1-way (3.62m 2-way)

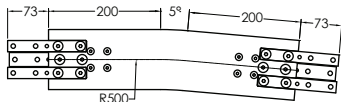
Tolerance: $\pm 2^\circ$ & Radius: ± 10 mm

- Connecting strip and set screw included.

Please consult MODU representative for further information and assistance.

Units: Dimension (mm)

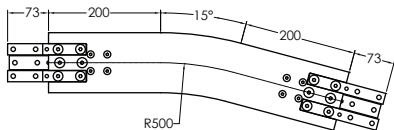
Vertical Bends MT2 (BT)



Vertical Bend, 5°

Item Code	Weight	Supply
MT2 BT BV 5R500	5.6 kg	1 set

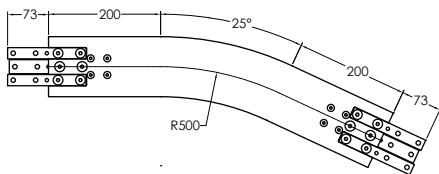
Effective track length:
 R500: 0.44m 1-way (0.88m 2-way)
 Tolerance: $\pm 2^\circ$ & Radius: $\pm 10\text{mm}$
 - Connecting strip and set screw included.



Vertical Bend, 15°

Item Code	Weight	Supply
MT2 BT BV 15R500	6.2 kg	1 set

Effective track length:
 R500: 0.53m 1-way (1.06m 2-way)
 Tolerance: $\pm 2^\circ$ & Radius: $\pm 10\text{mm}$
 - Connecting strip and set screw included.

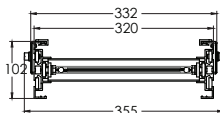
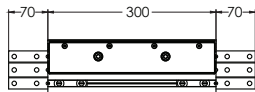


Vertical Bend, 25°

Item Code	Weight	Supply
MT2 BT BV 25R500	6.8 kg	1 set

Effective track length:
 R500: 0.62m 1-way (1.24m 2-way)
 Tolerance: $\pm 2^\circ$ & Radius: $\pm 10\text{mm}$
 - Connecting strip and set screw included.

Chain Installation Section (BT)



Item Code	Weight	Supply
MT2 BT CIS 300	4.9 kg	1 Unit

- Connecting strip and set screw included.



