

Conveyor System MF2



Description

585 mm width thermoplastic chain with aluminium frame conveyor system.

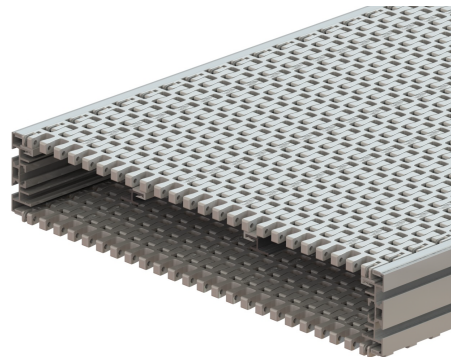
Examples of application industries

Personal Products, Pharmaceutical & Chemical Industry, Automotive & Machined Parts Industry, Food & Packaging Industry, Electrical & Electronic Industry, Paper Converting Industry and Optical Industry

Technical characteristics

Chain Width		585 mm
Chain Pitch		45 mm
Chain Weight		7.08 kg/m
Chain Maximum Working Tension	With Bend	2100N
	Without Bend	2200N
Max Product Weight*		30 kg
Total Load*		300 Kg
Working Temperature*		-10°C to 60°C
Max Conveyor Length*		30m
Max Speed*		50 m/min
Drive Unit Capacity		2200 N
Item Width*		<700 mm

* Actual limit may vary according to conveyor layout and application.

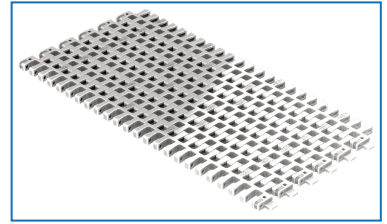
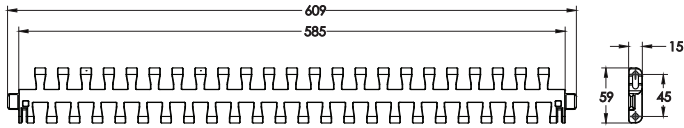


Please consult MODU representative for further information and assistance.

Units: Dimension (mm)

Chains MF2

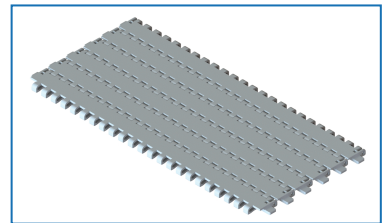
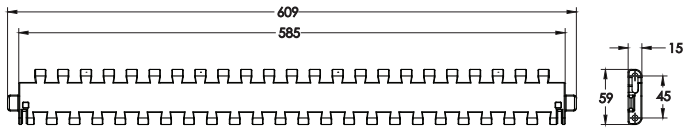
Plastic Curve Belt



- 8.5mm belt gap.
- Suitable for conveyor configuration with incline/decline up to 5°.
- Accumulation possible.

Item Code	Material	Colour	Weight	Supply
MF2 ST CP 5	POM	White	35.4 kg	5m/roll

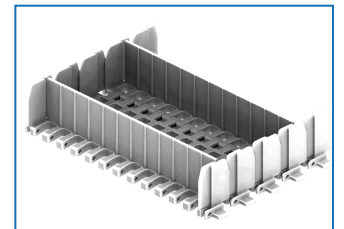
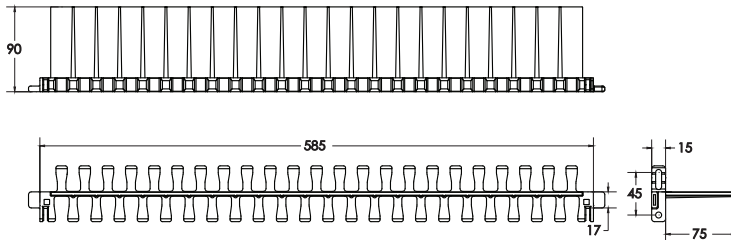
Plastic Straight Belt



- 0mm belt gap.
- Suitable for conveyor configuration with incline/decline up to 5°.
- Accumulation possible.

Item Code	Material	Colour	Weight	Supply
MF2 ZG CP 5	POM	White	38.2 kg	5m/roll

Plastic Cleated Belt



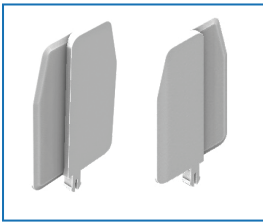
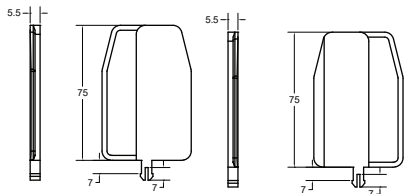
- Required for vertical or steep inclined / declined conveyor.
- Accumulation not possible.
- Not suitable to be use with Combined and Catenary Drive.
- Please specify pitch between cleat for ordering (eg. MF2 ST CC 3x15P 3p = Every 3rd link to be cleated).
- **Please consult MODU representative for actual Chain weight.

Item Code	Material	Colour	Weight	Supply
MF2 ST CC 3	POM	White	-	3m/roll

Please consult MODU representative for further information and assistance.

Units: Dimension (mm)

Side Guard L-R



Item Code	Material	Colour	Weight	Supply
MT2 CLP G-75	POM	White	1.7kg/pack	50pcs/pkt

Chain Accessories MF2

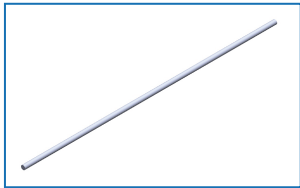
Lubricant For Chain



Item Code	Weight	Supply
MA SL	0.35 kg	1 pc

Silicone-based lubricant, 400ml

Chain Pin



Item Code	Material	Colour	Weight	Supply
MF2 PC	POM	White	0.16kg	10pcs/pkt

Belt Lock



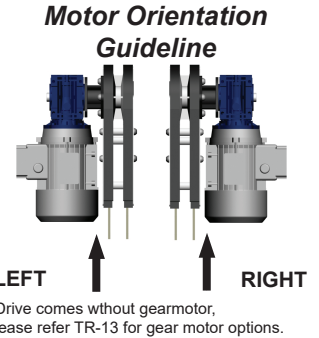
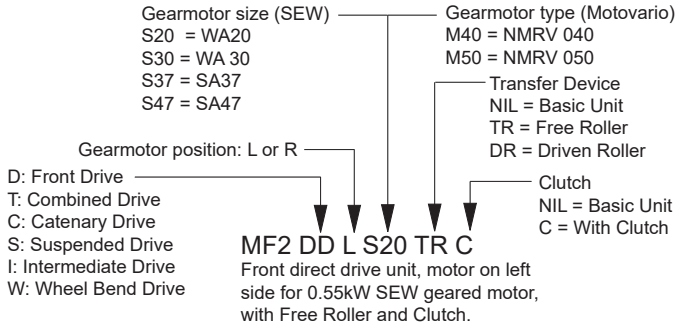
Item Code	Material	Colour	Weight	Supply
MT2 BL	POM	White	0.07kg	10pcs/pkt

Please consult MODU representative for further information and assistance.

Units: Dimension (mm)

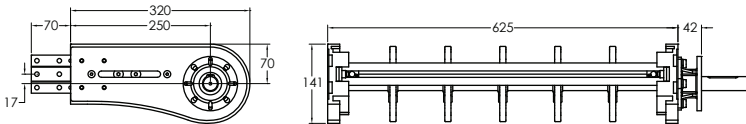
Drive Units MF2

Item Code Guideline For Drive Units



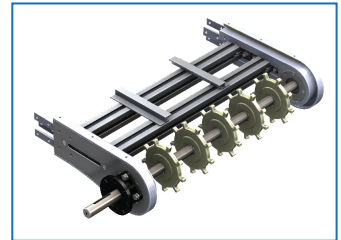
eg. Code for Basic unit; **MF2 DT R M50** => Combined drive unit, motor on right side for Motovario NMRV 050 geared motor.

Front Drive Unit

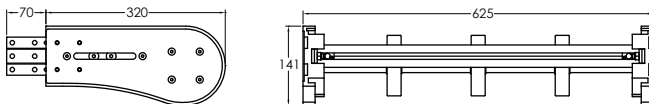


Item Code	Weight	Supply
MF2 DD R/L S/M	12.0 kg	1 unit

- Effective track length: 0.8m
 Traction force: 2200N
 - Connecting strip and set screw included.
 Note:
 - Refer TR15 for chain effective track length calculation.

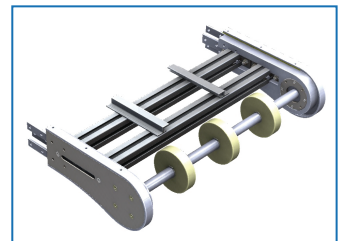


Idler End



Item Code	Weight	Supply
MF2 IE 320	11.3 kg	1 unit

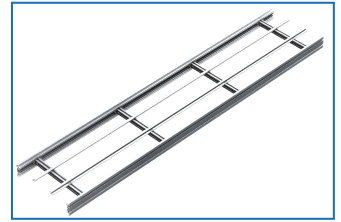
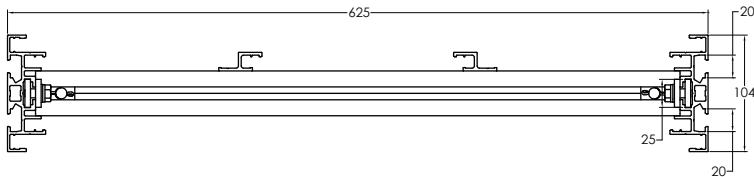
- Effective track length: 0.8m
 - Connecting strip and set screw included.
 Note:
 - Refer TR15 for chain effective track length calculation.



Please consult MODU representative for further information and assistance.

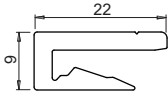
Units: Dimension (mm)

Conveyor Beam MF2



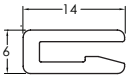
Item Code	Weight	Supply
MF2 CB 3	21.0 kg	3 m

Accessories MR2



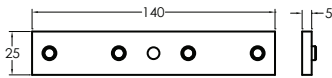
Slide Rail

Item Code	Material	Colour	Weight	Supply
MA2 SR 25	HDPE	Pure White	2.8 kg/roll	25m/roll
MA2 SR 25A	Anti-Static	Grey	2.8 kg/roll	25m/roll
MA2 SR 25U	UHMW-PE	Semi-Transparent White	3.5 kg/roll	25m/roll



Slide Rail

Item Code	Material	Colour	Weight	Supply
MS SR 25	HDPE	Pure White	1.2 kg/roll	25m/roll
MS SR 25A	Anti-Static	Grey	1.2 kg/roll	25m/roll
MS SR 25U	UHMW-PE	Semi-Transparent White	2.7 kg/roll	25m/roll
MS SR 25P	PVDF	Natural white	2.7 kg/roll	25m/roll



Connecting Strip

Item Code	Weight	Supply
MA CS 20x140	1.5 kg	10 pcs/pkt
MA CS 25x140	1.5 kg	10 pcs/pkt

- 4 pcs M8 set screw included.



T-Slot Cover

Item Code	Material	Colour	Weight	Supply
MB SC 25T	TPE	Grey	1.5 kg/roll	25m/roll
MB SC 25P	PVC	Light Grey	1.3 kg/roll	25m/roll



Screw

Item Code	Weight	Supply
MA RS 6.5	0.02 kg	50 pcs/pkt



Rivet

Item Code	Weight	Supply
MA RR 3	0.02 kg	50 pcs/pkt

Material: Brass Nickel plated (3mm)



Slide Rail Assembling Tool

Item Code	Weight	Supply
MT2 SRA	0.4 kg	1 pc



Slide Rail Cutter

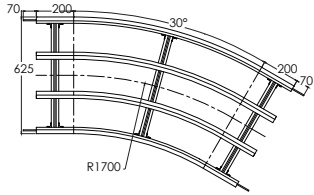
Item Code	Weight	Supply
MA SC	0.5 kg	1 pc

Please consult MODU representative for further information and assistance.

Units: Dimension (mm)

Horizontal Plain Bends MF2

Minimum Turning Radius is R1700



Horizontal Plain Bend, 30°

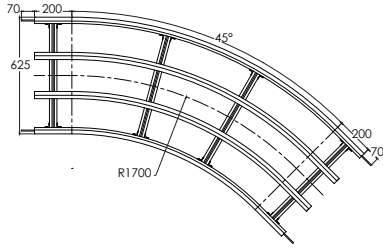
Item Code	R	Weight	Supply
MF2 BP 30R1700	1700 mm	11.5 kg	1 set

Effective track length:

R1700: 1.29m 1-way (2.58m 2-way)

Tolerance: $\pm 2^\circ$ & Radius: ± 10 mm

- Connecting strip and set screw included.



Horizontal Plain Bend, 45°

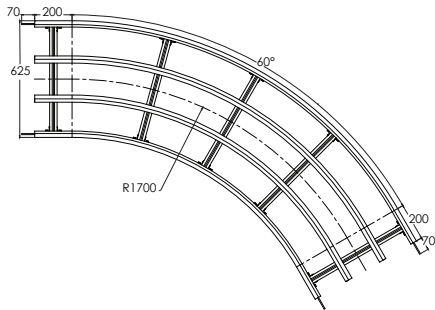
Item Code	R	Weight	Supply
MF2 BP 45R1700	1700 mm	15.2 kg	1 set

Effective track length:

R1700: 1.74m 1-way (3.48m 2-way)

Tolerance: $\pm 2^\circ$ & Radius: ± 10 mm

- Connecting strip and set screw included.



Horizontal Plain Bend, 60°

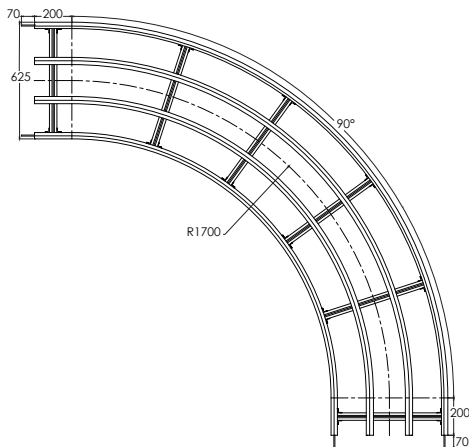
Item Code	R	Weight	Supply
MF2 BP 60R1700	1700 mm	19.0 kg	1 set

Effective track length:

R1700: 2.18m 1-way (4.36m 2-way)

Tolerance: $\pm 2^\circ$ & Radius: ± 10 mm

- Connecting strip and set screw included.



Horizontal Plain Bend, 90°

Item Code	R	Weight	Supply
MF2 BP 90R1700	1700 mm	25.1 kg	1 set

Effective track length:

R1700: 3.1m 1-way (6.2m 2-way)

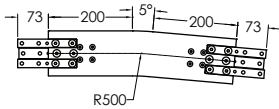
Tolerance: $\pm 2^\circ$ & Radius: ± 10 mm

- Connecting strip and set screw included.

Please consult MODU representative for further information and assistance.

Units: Dimension (mm)

Vertical Bends MF2



Vertical Bend, 5°

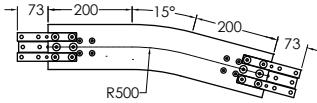
Item Code	Weight	Supply
MF2 BV 5R500	6.9 kg	1 set

Effective track length:

R500: 0.44m 1-way (0.88m 2-way)

Tolerance: $\pm 2^\circ$ & Radius: ± 10 mm

- Connecting strip and set screw included.



Vertical Bend, 15°

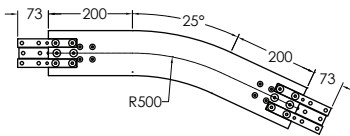
Item Code	Weight	Supply
MF2 BV 15R500	7.3 kg	1 set

Effective track length:

R500: 0.53m 1-way (1.06m 2-way)

Tolerance: $\pm 2^\circ$ & Radius: ± 10 mm

- Connecting strip and set screw included.



Vertical Bend, 25°

Item Code	Weight	Supply
MF2 BV 25R500	8.0 kg	1 set

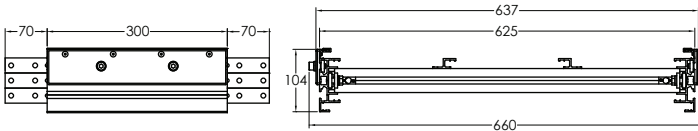
Effective track length:

R500: 0.62m 1-way (1.24m 2-way)

Tolerance: $\pm 2^\circ$ & Radius: ± 10 mm

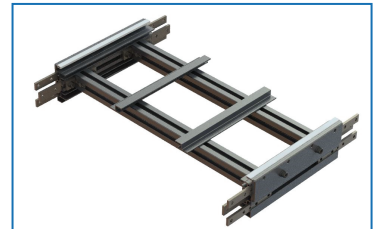
- Connecting strip and set screw included.

Chain Installation Section



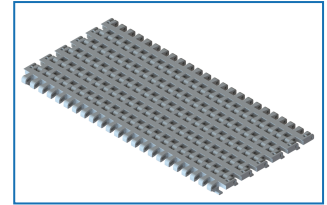
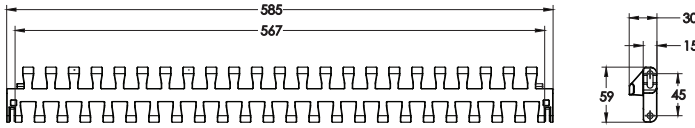
Item Code	Weight	Supply
MF2 CIS 300	5.9 kg	1 Unit

- Connecting strip and set screw included.



Chains MR2 (BT)

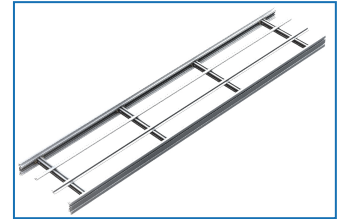
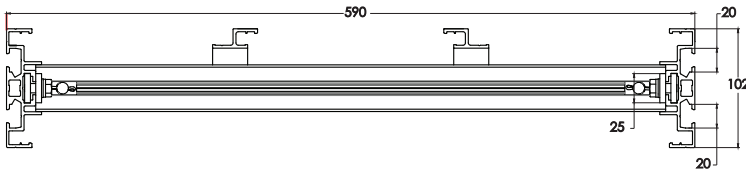
Plastic Curve Belt (Bottom Tab)



- 8.5mm belt gap.
- Suitable for conveyor configuration with incline/decline up to 5°.
- Accumulation possible.

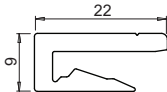
Item Code	Material	Colour	Weight	Supply
MR2 BT CP 5	POM	White	35.4 kg/roll	5m/roll

Conveyor Beam MF2 (BT)



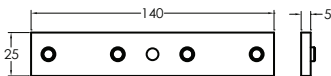
Item Code	Weight	Supply
MF2 BT CB 3	21.0 kg	3 m

Accessories MT2



Slide Rail

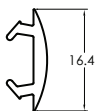
Item Code	Material	Colour	Weight	Supply
MA2 SR 25	HDPE	Pure White	2.8 kg/roll	25m/roll
MA2 SR 25A	Anti-Static	Grey	2.8 kg/roll	25m/roll
MA2 SR 25U	UHMW-PE	Semi-Transparent White	3.5 kg/roll	25m/roll



Connecting Strip

Item Code	Weight	Supply
MA CS 20x140	1.5 kg	10 pcs/pkt
MA CS 25x140	1.5 kg	10 pcs/pkt

- 4 pcs M8 set screw included.



T-Slot Cover

Item Code	Material	Colour	Weight	Supply
MB SC 25T	TPE	Grey	1.5 kg/roll	25m/roll
MB SC 25P	PVC	Light Grey	1.3 kg/roll	25m/roll



Screw

Item Code	Weight	Supply
MA RS 6.5	0.02 kg	50 pcs/pkt



Slide Rail Assembling Tool

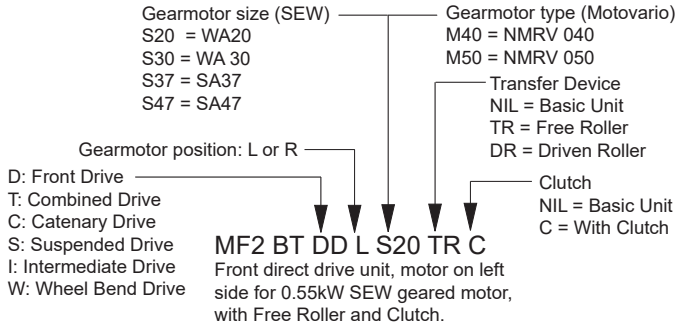
Item Code	Weight	Supply
MT2 SRA	0.4 kg	1 pc

Please consult MODU representative for further information and assistance.

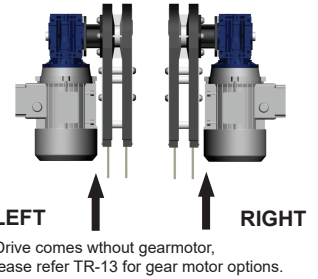
Units: Dimension (mm)

Drive Units MF2 (BT)

Item Code Guideline For Drive Units

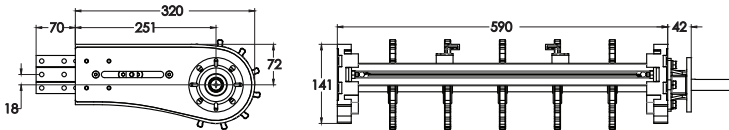


Motor Orientation Guideline



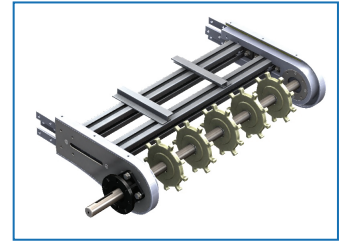
eg. Code for Basic unit; MF2 BT DD R M50 => Front drive unit for bottom tab chain, motor on right side for Motovario NMRV 050 geared motor.

Front Drive Unit (BT)

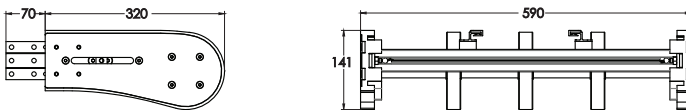


Item Code	Weight	Supply
MF2 BT DD R/L S/M	12.0 kg	1 unit

Effective track length: 0.8m
 Traction force: 2200N
 - Connecting strip and set screw included.
 Note:
 - Refer TR15 for chain effective track length calculation.

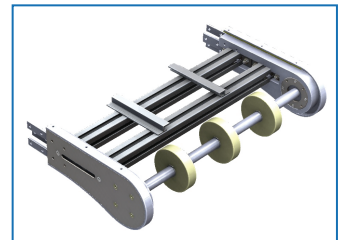


Idler End (BT)



Item Code	Weight	Supply
MF2 BT IE 320	11.3 kg	1 unit

Effective track length: 0.8m
 - Connecting strip and set screw included.
 Note:
 - Refer TR15 for chain effective track length calculation.

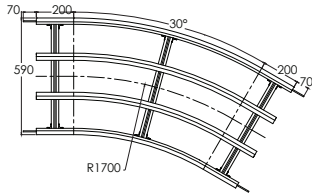


Please consult MODU representative for further information and assistance.

Units: Dimension (mm)

Horizontal Plain Bends MF2 (BT)

Minimum Turning Radius is R1700



Horizontal Plain Bend, 30°

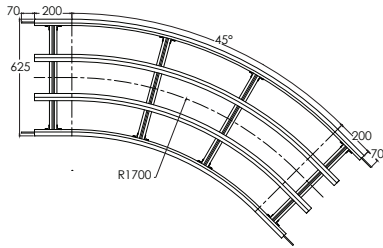
Item Code	R	Weight	Supply
MF2 BT BP 30R1700	1700 mm	11.5 kg	1 set

Effective track length:

R1700: 1.29m 1-way (2.58m 2-way)

Tolerance: $\pm 2^\circ$ & Radius: ± 10 mm

- Connecting strip and set screw included.



Horizontal Plain Bend, 45°

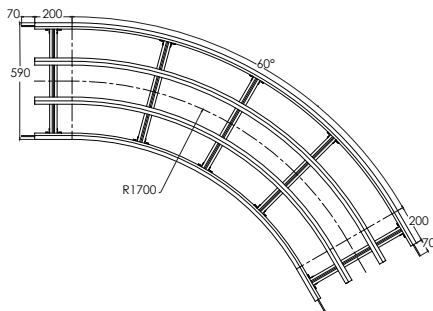
Item Code	R	Weight	Supply
MF2 BT BP 45R1700	1700 mm	15.2 kg	1 set

Effective track length:

R1700: 1.74m 1-way (3.48m 2-way)

Tolerance: $\pm 2^\circ$ & Radius: ± 10 mm

- Connecting strip and set screw included.



Horizontal Plain Bend, 60°

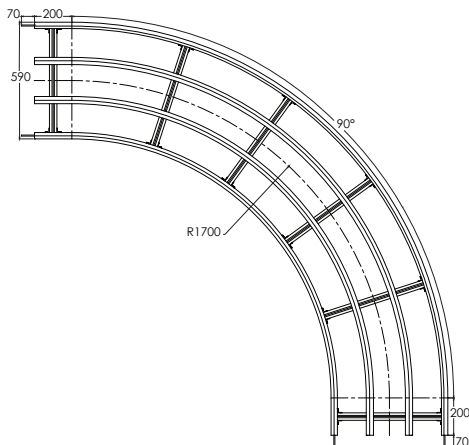
Item Code	R	Weight	Supply
MF2 BT BP 60R1700	1700 mm	19.0 kg	1 set

Effective track length:

R1700: 2.18m 1-way (4.36m 2-way)

Tolerance: $\pm 2^\circ$ & Radius: ± 10 mm

- Connecting strip and set screw included.



Horizontal Plain Bend, 90°

Item Code	R	Weight	Supply
MF2 BT BP 90R1700	1700 mm	25.1 kg	1 set

Effective track length:

R1700: 3.1m 1-way (6.2m 2-way)

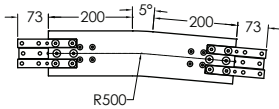
Tolerance: $\pm 2^\circ$ & Radius: ± 10 mm

- Connecting strip and set screw included.

Please consult MODU representative for further information and assistance.

Units: Dimension (mm)

Vertical Bends MF2 (BT)



Vertical Bend, 5°

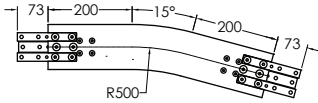
Item Code	Weight	Supply
MF2 BT BV 5R500	6.9 kg	1 set

Effective track length:

R500: 0.44m 1-way (0.88m 2-way)

Tolerance: $\pm 2^\circ$ & Radius: $\pm 10\text{mm}$

- Connecting strip and set screw included.



Vertical Bend, 15°

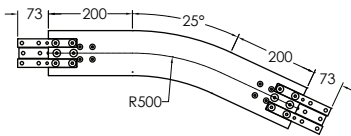
Item Code	Weight	Supply
MF2 BT BV 15R500	7.3 kg	1 set

Effective track length:

R500: 0.53m 1-way (1.06m 2-way)

Tolerance: $\pm 2^\circ$ & Radius: $\pm 10\text{mm}$

- Connecting strip and set screw included.



Vertical Bend, 25°

Item Code	Weight	Supply
MF2 BT BV 25R500	8.0 kg	1 set

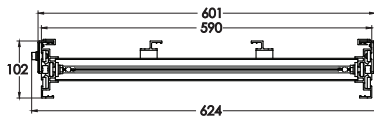
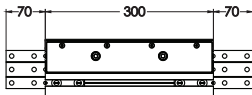
Effective track length:

R500: 0.62m 1-way (1.24m 2-way)

Tolerance: $\pm 2^\circ$ & Radius: $\pm 10\text{mm}$

- Connecting strip and set screw included.

Chain Installation Section (BT)



Item Code	Weight	Supply
MF2 BT CIS 300	5.9 kg	1 Unit

- Connecting strip and set screw included.

