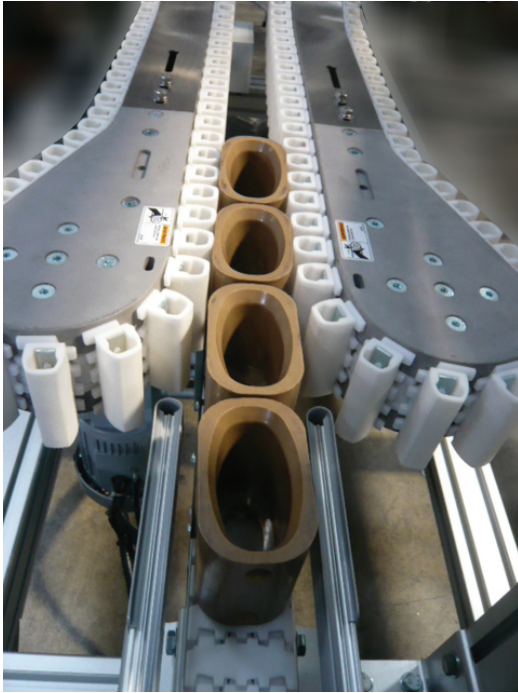


# Conveyor System DM3



## Description

83mm width thermoplastic chain with stainless steel frame conveyor system. Also available with aluminium frame, please refer section MM3.

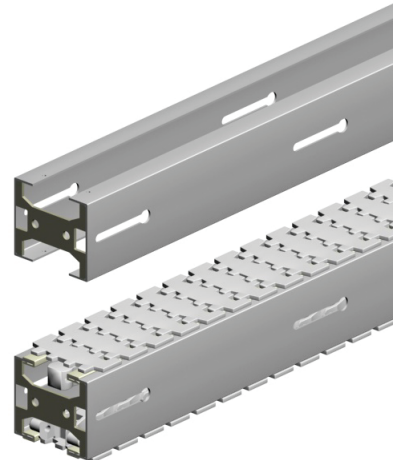
## Examples of application industries

Personal Products, Pharmaceutical & Chemical Industry, Automotive & Machined Parts Industry, Food & Packaging Industry, Electrical & Electronic Industry, Paper Converting Industry, and Optical Industry

## Technical characteristics

Chain Width		83 mm
Chain Pitch		33.5 mm
Chain Weight		1.3 kg/m
Max Tension	With Wheel Bend	800 N
	Without Wheel Bend	1000 N
Max Product Weight*	Horizontal Transport	15 kg
	Vertical Transport	10 kg
Total Load*		250 Kg
Working Temperature*		-10°C to 60°C
Max Conveyor Length*		30m
Max Speed*		50 m/min
Drive Unit Capacity		1000 N
Item Width*		20-200 mm

\* Actual limit may vary according to conveyor layout and application.

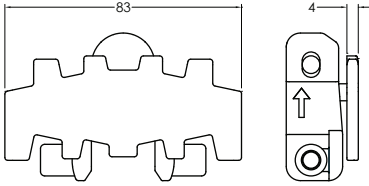


Please consult MODU representative for further information and assistance.

Units: Dimension (mm)

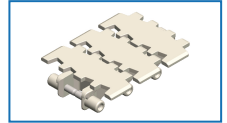


## Chains MM3

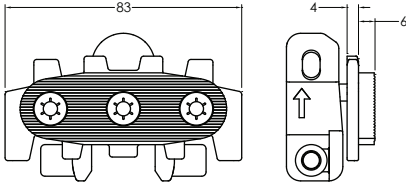


### Plain Chain

- Suitable for conveyor configuration with incline/decline up to 5°.
- Accumulation possible.
- Available in polish surface for this type of chain.

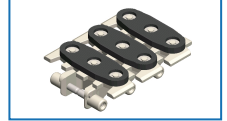


Item Code	Material	Colour	Weight	Supply
MM3 CP 5	POM	White	6.5 kg/roll	5m/roll
MM3 CP 5A	Anti-Static	Black	6.5 kg/roll	5m/roll
MM3 CP 5K	POM-Kevlar	Yellow	8.0 kg/roll	5m/roll

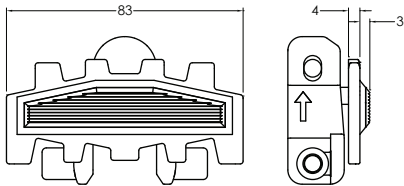


### Insert Friction Chain

- Suitable for conveyor configuration with incline/decline up to 25°.
- Friction material : TPE (grey).
- Accumulation not possible.

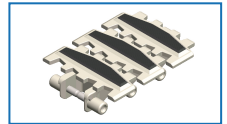


Item Code	Material	Colour	Weight	Supply
MM3 CF 5	POM	White	7.5 kg/roll	5m/roll
MM3 CF 5A	Anti-Static	Black	7.5 kg/roll	5m/roll
MM3 CF 5K	POM-Kevlar	Yellow	9.5 kg/roll	5m/roll

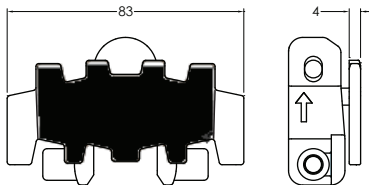


### Molded Friction Chain

- Suitable for conveyor configuration with incline/decline up to 25°.
- Friction material : TPE (grey).
- Accumulation not possible.
- PP chain working material tension = 500N.



Item Code	Material	Colour	Weight	Supply
MM3 CF 5P	PP	White	7.8 kg/roll	5m/roll

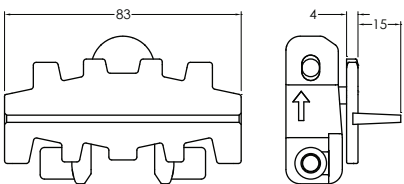


### Flocked Chain

- Suitable for scratch sensitive material.
- Flock colour : Grey.
- Accumulation possible for light product only.
- PP chain material working tension = 500N.
- Sticker type only.



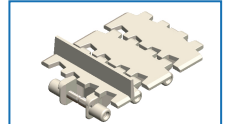
Item Code	Material	Colour	Weight	Supply
MM3 CL 5	POM	White	7.0 kg/roll	5m/roll



### Cleated Chain - Machined PE Cleated

- Required for vertical or steeply inclined / declined conveyor.
- Accumulation not possible.
- Not suitable to be use with Combined and Catenary Drive.
- Please specify pitch between cleat for ordering (eg. MM3 CC 3x15P 3p = Every 3rd link to be cleated).

\*\*Please consult MODU representative for actual Chain weight.



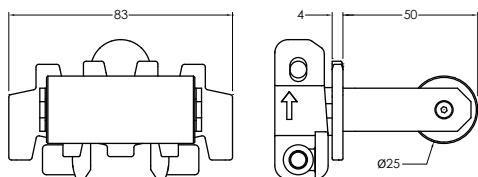
Item Code	Material	Colour	Weight	Supply
MM3 CC 3x15P	POM	White	** kg/roll	3m/roll
MM3 CC 3x15A	Anti-Static	Black	** kg/roll	3m/roll
MM3 CC 3x15K	POM-Kevlar	Yellow	** kg/roll	3m/roll

\* Other cleated height are available upon request.

Please consult MODU representative for further information and assistance.

Units: Dimension (mm)

## MM3 Chains (continued)

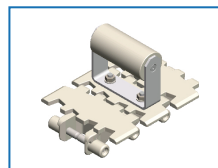


\* Non-standard height are available upon request.

### Roller Cleated Chain

- Required for vertical or steeply inclined / declined conveyor.
- Accumulation not possible.
- Not suitable to be use with Combined and Catenary Drive.
- Please specify pitch between cleat for ordering (eg. MM3 CR 3P 3p = Every 3rd link to be cleated).

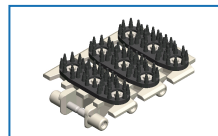
\*\*Please consult MODU representative for actual Chain weight.



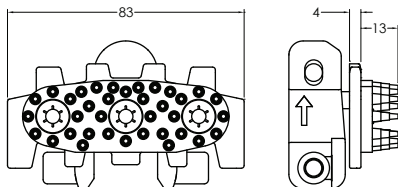
Item Code	Material	Colour	Weight	Supply
MM3 CR 3P	POM	White	** kg/roll	3m/roll

### Finger Gripper Chain

- Suitable to be use for transferring product with a gripping method.
- Accumulation not possible.
- Not suitable to use with Combined Drive.

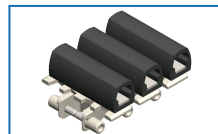


Item Code	Material	Colour	Weight	Supply
MM3 CG 3F	POM	White	5.0 kg/roll	3m/roll
MM3 CG 3FA	Anti-Static	Black	5.0 kg/roll	3m/roll
MM3 CG 3FK	POM-Kevlar	Yellow	6.0 kg/roll	3m/roll



### Box Gripper Chain

- Suitable to be use for transferring product with a gripping method.
- Accumulation not possible.
- Not suitable to use with Combined Drive.



#### Soft - 50A

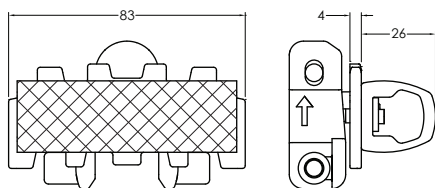
Item Code	Material	Colour	Weight	Supply
MM3 CG 3BS	POM	White	7.7 kg/roll	3m/roll
MM3 CG 3BSA	Anti-Static	Black	7.7 kg/roll	3m/roll
MM3 CG 3BSK	POM-Kevlar	Yellow	8.7 kg/roll	3m/roll

#### Medium - 60A

Item Code	Material	Colour	Weight	Supply
MM3 CG 3BM	POM	White	7.7 kg/roll	3m/roll
MM3 CG 3BMA	Anti-Static	Black	7.7 kg/roll	3m/roll
MM3 CG 3BMK	POM-Kevlar	Yellow	8.7 kg/roll	3m/roll

#### Hard - 73A

Item Code	Material	Colour	Weight	Supply
MM3 CG 3BH	POM	White	7.7 kg/roll	3m/roll
MM3 CG 3BHA	Anti-Static	Black	7.7 kg/roll	3m/roll
MM3 CG 3BHK	POM-Kevlar	Yellow	8.7 kg/roll	3m/roll



Gripper Box	Max product weight
<b>Soft Type</b> – 50A Shore Hardness	up to 2 kg
<b>Medium Type</b> – 60A Shore Hardness	up to 5 kg
<b>Hard Type</b> – 73A Shore Hardness	up to 10 kg

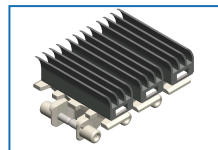
Indicator:



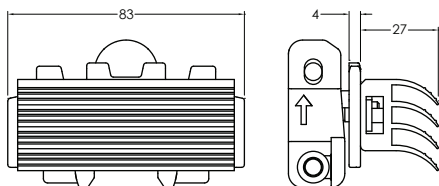
- I Soft
- II Medium
- III Hard

### Wedge Gripper Chain

- Suitable to be use for transferring product with a gripping method.
- Accumulation not possible.
- Not suitable to use with Combined Drive.



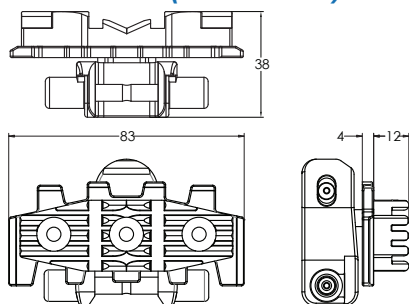
Item Code	Material	Colour	Weight	Supply
MM3 CG 3W	POM	White	5.0 kg/roll	3m/roll
MM3 CG 3WA	Anti-Static	Black	5.0 kg/roll	3m/roll
MM3 CG 3WK	POM-Kevlar	Yellow	8.7 kg/roll	3m/roll



Please consult MODU representative for further information and assistance.

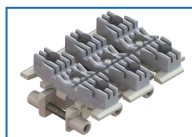
Units: Dimension (mm)

## MM3 Chains (continued)



### Silicone Pad Gripper Chain

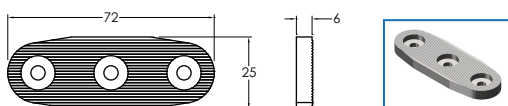
- High friction for incline of cylindrical product up to 40°
- Accumulation not possible.
- Not suitable to use with Combined Drive.



Item Code	Material	Colour	Weight	Supply
MM3 CG 3SG	POM	White	5.4 kg/roll	3m/roll
MM3 CG 3SGA	Anti-Static	Black	5.4 kg/roll	3m/roll
MM3 CG 3SGK	POM-Kevlar	Yellow	9.4 kg/roll	3m/roll

## Chain Top Replacement MM3

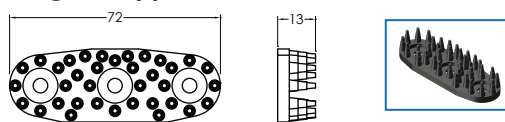
### Friction Pad



- Friction pad used for Gen 3 chain.

Item Code	Material	Colour	Weight	Supply
MM3 FP 83	TPE	Grey	0.01 kg/roll	10 pcs/pkt

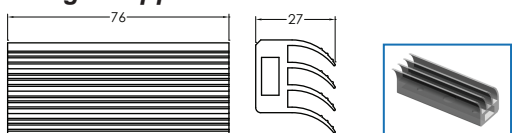
### Finger Gripper Pad



- Friction gripper pad used for Gen 3 chain

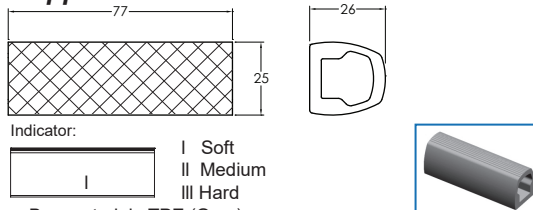
Item Code	Material	Colour	Weight	Supply
MM3 GP 83F	TPU	Grey	0.09 kg	10 pcs/pkt

### Wedge Gripper



Item Code	Material	Colour	Weight	Supply
MM3 GP 83W	TPU	Grey	0.2 kg	10 pcs/pkt

### Gripper Box



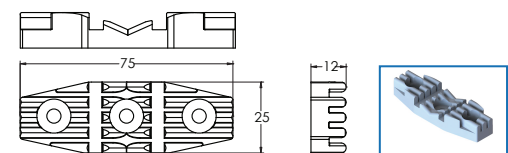
Indicator:

I	Soft
II	Medium
III	Hard

- Box material : TPE (Grey).

Item Code	Material	Hardness	Colour	Weight	Supply
MM3 GP BS	TPE	Soft - 50A	Grey	0.2 kg	10 pcs/pkt
MM3 GP BM	TPE	Med - 60A	Grey	0.2 kg	10 pcs/pkt
MM3 GP BH	TPE	Hard - 73A	Grey	0.2 kg	10 pcs/pkt

### Silicone Pad Gripper



Item Code	Material	Colour	Weight	Supply
MM3 GP 83 S-45	Silicone	Grey	0.3 kg	10 pcs/pkt

## Chain Accessories MM3

### Stainless Steel Pin



Item Code	Weight	Supply
MM3 PN M6x53	0.07 kg	10 pcs/pkt

### Chain Pivot



Item Code	Weight	Supply
MM3 PV	0.02 kg	10 pcs/pkt

### Lubricant For Chain



Silicone-based lubricant,  
400ml

Item Code	Weight	Supply
MA SL	0.35 kg	1 pc

### Attachment For Chain Tool



Chain attachment &  
drive pin

Item Code	Weight	Supply
MM3 AC	0.2 kg	1 set

### Chain Pin Insertion Tool



Chain pin insertion tool shown without  
attachment & specific drive pin

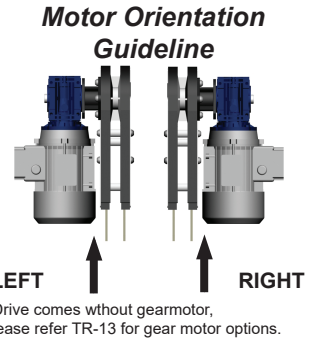
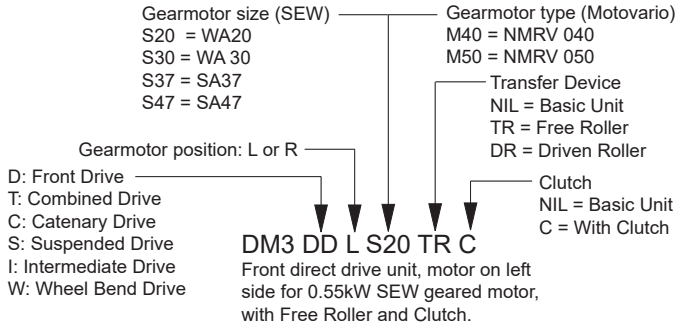
Item Code	Weight	Supply
TR CP 1	1.2 kg	1 pc

Please consult MODU representative for further information and assistance.

Units: Dimension (mm)

## Drive Units DM3

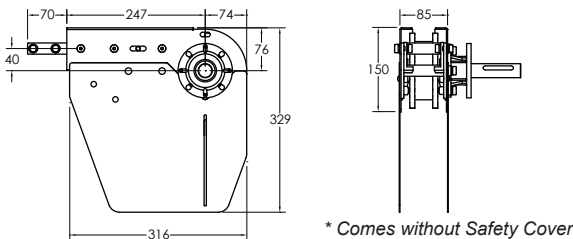
### Item Code Guideline For Drive Units



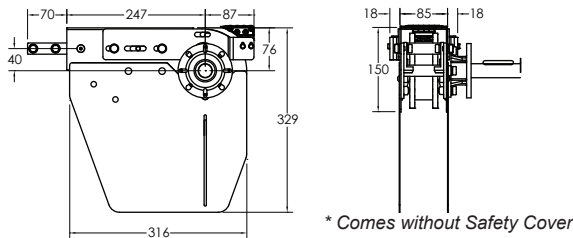
eg. Code for Basic unit; **DM3 DT R M50** => Combined drive unit, motor on right side for Motovario NMRV 050 geared motor.

### Front Drive Unit

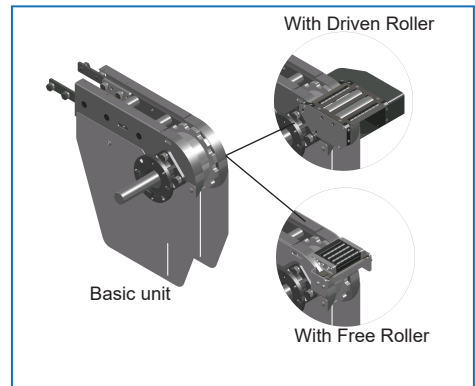
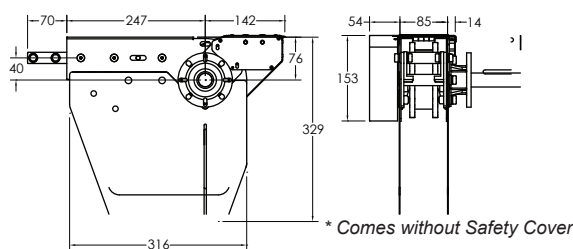
#### Basic Front Drive



#### Front Drive with Free Roller



#### Front Drive with Driven Roller



- Driven Roller speed is approximately 10% higher than conveyor speed.

Effective track length: 1.63m  
 Traction force: 1000N

Item Code	Weight	Supply
DM3 DD R/L S/M	5.5 kg	1 unit
DM3 DD R/L S/M TR With free roller	5.7 kg	1 unit
DM3 DD R/L S/M DR With driven roller	7.2 kg	1 unit

- Connecting strip and screw included.
- Note:
- Safety Comes as an option.
- Recommended maximum chain elongation is 328mm from top conveyor to chain slack.
- Refer TR15 for chain effective track length calculation.
- Cleated Chain is not possible to use on drive with Free Roller or Driven Roller.

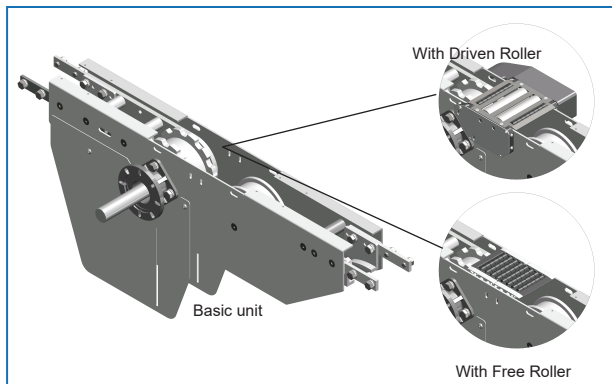
Please consult MODU representative for further information and assistance.

Units: Dimension (mm)

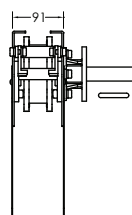
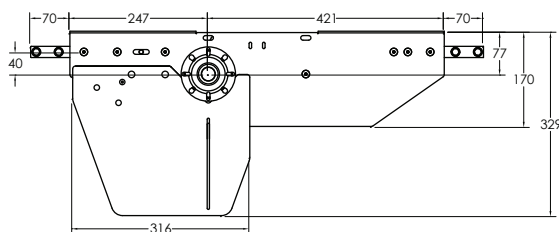


## Drive Units DM3 (Continued)

### Combined Drive Unit



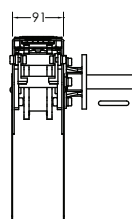
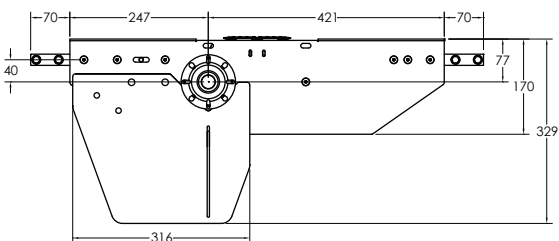
Basic Combined Drive



- Driven Roller speed is approximately 10% higher than conveyor speed.

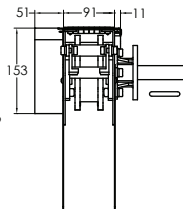
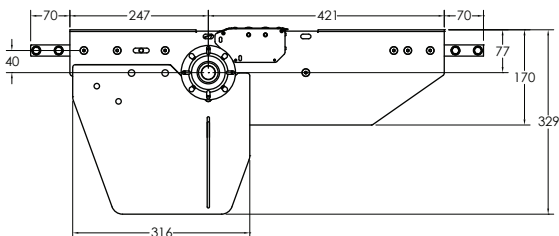
\* Comes without Safety Cover

Combined Drive with Free Roller



\* Comes without Safety Cover

Combined Drive with Driven Roller



\* Comes without Safety Cover

Item Code	Weight	Supply
DM3 DT R/L S/M	10.8 kg	1 unit
DM3 DT R/L S/M TR With free roller	11.0 kg	1 unit
DM3 DT R/L S/M DR With driven roller	12.5 kg	1 unit

Effective track length: 1.63m

Traction force: 1000N

- Connecting strip and screw included.

Notes:

- Safety Comes as an option.

- Recommended maximum chain elongation is 328mm from top conveyor to chain slack.

- Refer TR15 for chain effective track length calculation.

- Cleated Chain is not possible to use on drive with Free Roller or Driven Roller.

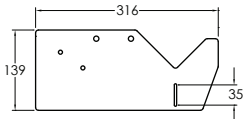
Please consult MODU representative for further information and assistance.

Units: Dimension (mm)

Drive Units DM3 (Continued)

Safety Cover for Front Drive and Combined Drive

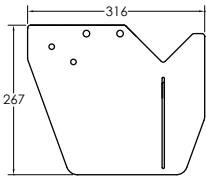
Short Safety Cover



- Material : Stainless Steel

Item Code	Weight	Supply
SC 139	0.8 kg	2 pcs/set

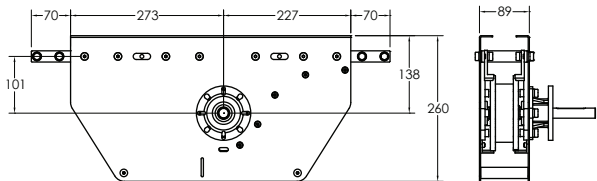
Normal Safety Cover



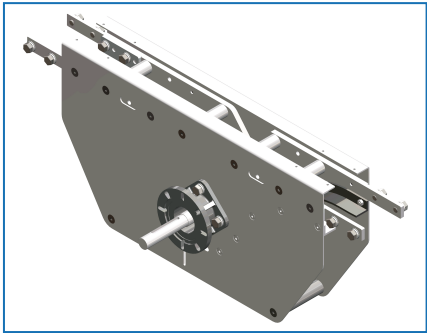
- Material : Stainless Steel

Item Code	Weight	Supply
SC 267	1.4 kg	2 pcs/set

Intermediate Drive Unit



Item Code	Weight	Supply
DM3 DI R/L S/M	13.0 kg	1 unit



Effective track length: 1.2m

Traction force: 200N

- Connecting strip and screw included.

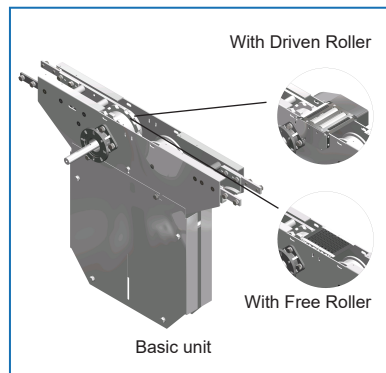
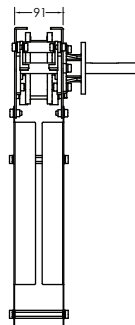
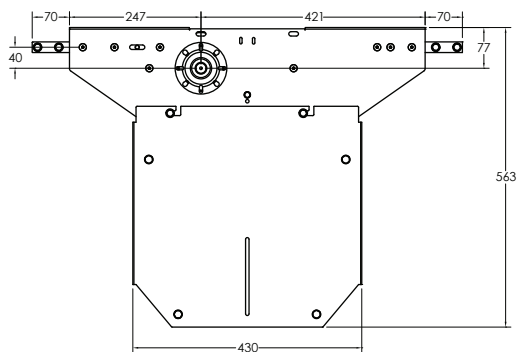
Note:

- Refer TR15 for chain effective track length calculation.

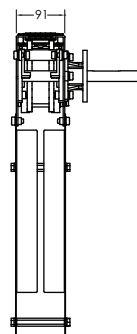
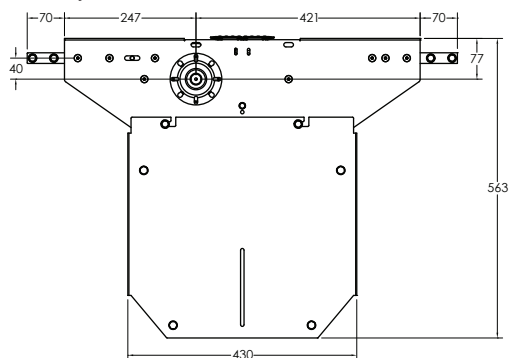
## Drive Units DM3 (Continued)

### Catenary Drive Unit

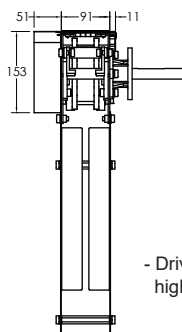
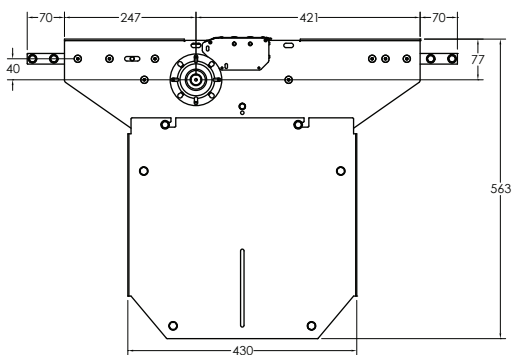
Basic Catenary Drive



Catenary Drive with Free Roller



Catenary Drive with Driven Roller



- Driven Roller speed is approximately 10% higher than conveyor speed.

Item Code	Weight	Supply
DM3 DC R/L S/M	19.5 kg	1 unit
DM3 DC R/L S/M TR	19.7 kg	1 unit
With free roller		
DM3 DC R/L S/M DR	21.2 kg	1 unit
With driven roller		

Effective track length: 1.66m

Traction force: 500N

- Connecting strip and screw included.

Note:

- For top running chain.

- Refer TR15 for chain effective track length calculation.

- Cleated Chain is not possible to use on this drive.

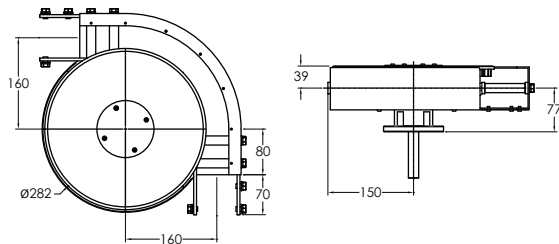
Please consult MODU representative for further information and assistance.

Units: Dimension (mm)

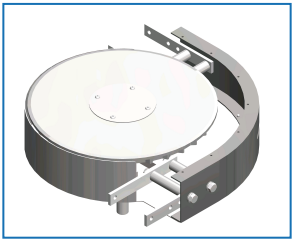
AP TR MS2 MT2 MX2 ML2 MM3 MF2 MR2 MG MA MB DS2 DL2 DX2 DT2 DR2 DF2 DG DB DA SD SE TL IM MM

Drive Units DM3 (Continued)

90° Wheel Bend Drive Unit

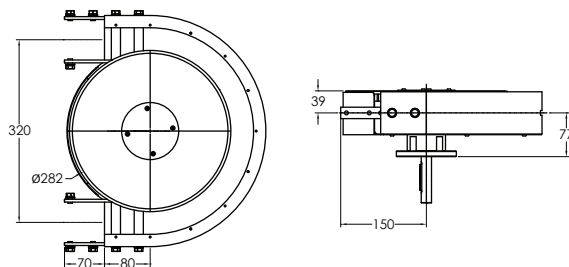


Effective track length: 0.41m  
Traction force: 200N  
- Connecting strip and screw included.

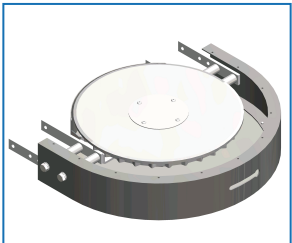


Item Code	Weight	Supply
DM3 DW 90R160 S/M	8.0 kg	1 unit

180° Wheel Bend Drive Unit



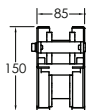
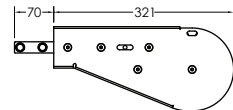
Effective track length: 0.82m  
Traction force: 200N  
- Connecting strip and screw included.



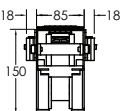
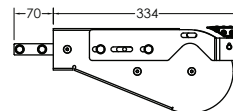
Item Code	Weight	Supply
DM3 DW 180R160 S/M	8.5 kg	1 unit

Idler End

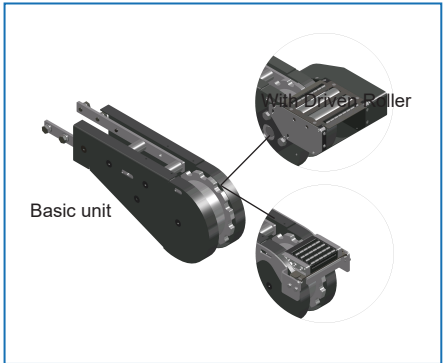
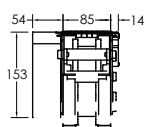
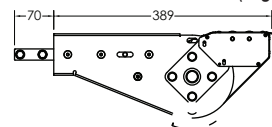
Basic Idler End



Idler End with Free Roller



Idler End with Driven Roller \*(Right)



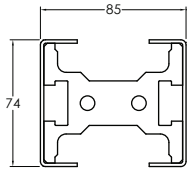
Item Code	Weight	Supply
DM3 IE 320	3.2 kg	1 unit
DM3 IE 320 TR With free roller	3.6 kg	1 unit
DM3 IE2 320 DR With driven roller	5.9 kg	1 unit

- Driven Roller speed is approximately 10% higher than conveyor speed.  
Effective track length: 0.82m  
- Connecting strip and screw included.  
Note:  
- Cleated Chain not suitable for Driven Roller & Free Roller

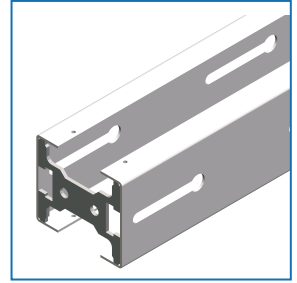
Please consult MODU representative for further information and assistance. Units: Dimension (mm)



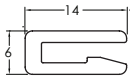
## Conveyor Beam DM3



Item Code	Weight	Supply
DM3 CB 2.4	7.6 kg	2.4 m

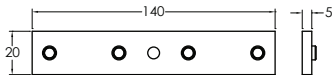


## Accessories DM3



### Slide Rail

Item Code	Material	Colour	Weight	Supply
MS SR 25	HDPE	Pure White	1.2 kg/roll	25m/roll
MS SR 25A	Anti-Static	Grey	1.2 kg/roll	25m/roll
MS SR 25U	UHMW-PE	Semi-Transparent White	2.7 kg/roll	25m/roll
MS SR 25P	PVDF	Natural White	2.7 kg/roll	25m/roll



### Connecting Strip

Item Code	Weight	Supply
DA CS 20x140	1.5 kg	10 pcs/pkt

- 4 pcs M8 set screw included.



### Rivets

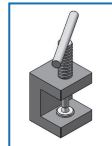
Item Code	Weight	Supply
MA RR 3	0.02 kg	50 pcs/pkt

Material: Aluminium



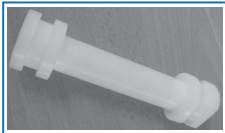
### Slide Rail Cutter

Item Code	Weight	Supply
MA SC	0.5 kg	1 pc



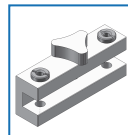
### Rivet Crimping

Item Code	Weight	Supply
MA RC	0.13 kg	1 pc



### Slide Rail Mounting Tool

Item Code	Weight	Supply
MM3 SRA	0.4 kg	1 pc

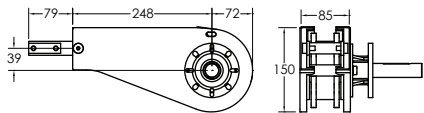


### Slide Rail Drill Fixture

Item Code	Weight	Supply
MA SRF	0.24 kg	1 pc

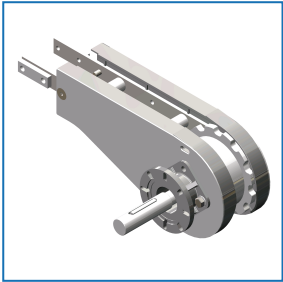
# Gripper Elevator / Lowerator Components

## Gripper Drive Unit

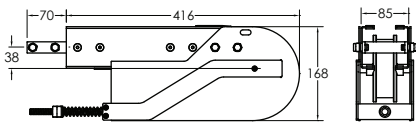


Item Code	Weight	Supply
DM3 DG R/L S/M	6.0 kg	1 unit

Effective track length: 0.82m  
 - Connecting strip and screw included.

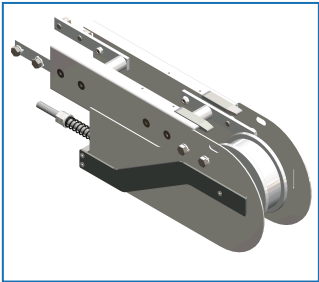


## Gripper Idler End

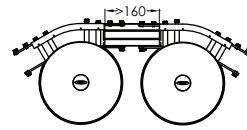
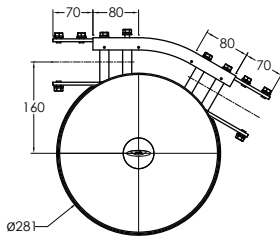


Item Code	Weight	Supply
DM3 IG 400	6.2 kg	1 unit

Effective track length: 0.82m  
 - Connecting strip and screw included.  
 - Comes with self tensioning unit.



## Horizontal Wheel Bends DM3

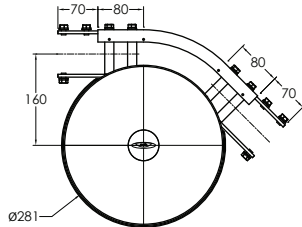


Minimum straight section for all wheel bend connection.

### Wheel Bend, 30°

Item Code	Weight	Supply
DM3 BW 30R160	3.6 kg	1 set

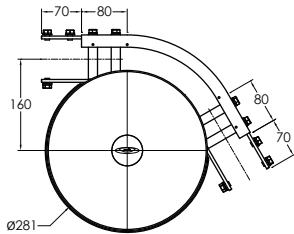
Effective track length:  
0.24m 1-way (0.48 m 2-way)  
Tolerance:  $\pm 2^\circ$   
- Connecting strip and screw included.



### Wheel Bend, 45°

Item Code	Weight	Supply
DM3 BW 45R160	4.0 kg	1 set

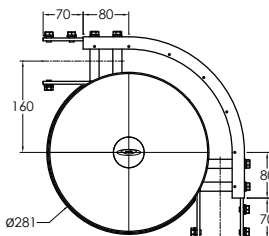
Effective track length:  
0.28m 1-way (0.56m 2-way)  
Tolerance:  $\pm 2^\circ$   
- Connecting strip and screw included.



### Wheel Bend, 60°

Item Code	Weight	Supply
DM3 BW 60R160	4.1 kg	1 set

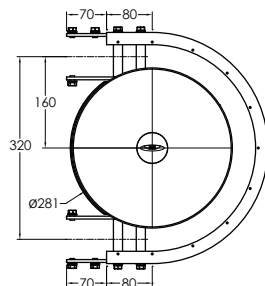
Effective track length:  
0.33m 1-way (0.66 m 2-way)  
Tolerance:  $\pm 2^\circ$   
- Connecting strip and screw included.



### Wheel Bend, 90°

Item Code	Weight	Supply
DM3 BW 90R160	4.2 kg	1 set

Effective track length:  
0.41m 1-way (0.82m 2-way)  
Tolerance:  $\pm 2^\circ$   
- Connecting strip and screw included.



### Wheel Bend, 180°

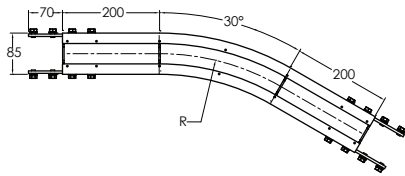
Item Code	Weight	Supply
DM3 BW 180R160	4.4 kg	1 set

Effective track length:  
0.66m 1-way (1.32 m 2-way).  
Tolerance:  $\pm 2^\circ$   
- Connecting strip and screw included.

Please consult MODU representative for further information and assistance.

Units: Dimension (mm)

## Horizontal Plain Bends DM3



### Horizontal Plain Bend, 30°

Item Code	R	Weight	Supply
DM3 BP 30R500	500 mm	2.5 kg	1 set
DM3 BP 30R700	700 mm	2.9 kg	1 set
DM3 BP 30R1000	1000 mm	3.5 kg	1 set

Effective track length:

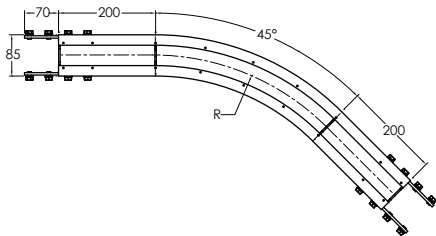
R500: 0.66m 1-way (1.32m 2-way)

R700: 0.77m 1-way (1.54m 2-way)

R1000: 0.92m 1-way (1.84m 2-way).

Tolerance:  $\pm 2^\circ$  & Radius:  $\pm 10\text{mm}$

- Connecting strip and screw included.



### Horizontal Plain Bend, 45°

Item Code	R	Weight	Supply
DM3 BP 45R500	500 mm	3.0 kg	1 set
DM3 BP 45R700	700 mm	3.0 kg	1 set
DM3 BP 45R1000	1000 mm	4.4 kg	1 set

Effective track length:

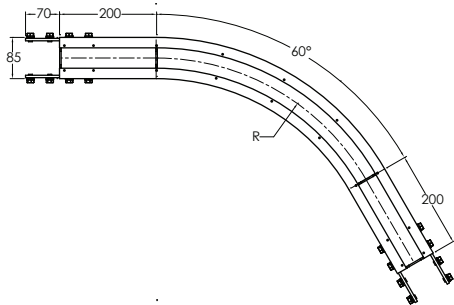
R500: 0.79m 1-way (1.58m 2-way)

R700: 0.95m 1-way (1.90m 2-way)

R1000: 1.12m 1-way (2.40m 2-way)

Tolerance:  $\pm 2^\circ$  & Radius:  $\pm 10\text{mm}$

- Connecting strip and screw included.



### Horizontal Plain Bend, 60°

Item Code	R	Weight	Supply
DM3 BP 60R500	500 mm	3.5 kg	1 set
DM3 BP 60R700	700 mm	4.2 kg	1 set
DM3 BP 60R1000	1000 mm	5.4 kg	1 set

Effective track length:

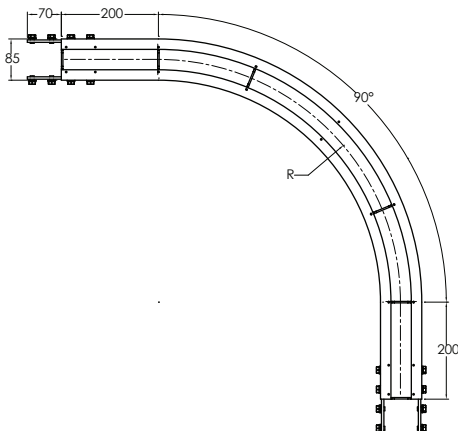
R500: 0.92m 1-way (1.84m 2-way)

R700: 1.13m 1-way (2.26m 2-way)

R1000: 1.45m 1-way (2.90m 2-way)

Tolerance:  $\pm 2^\circ$  & Radius:  $\pm 10\text{mm}$

- Connecting strip and screw included.



### Horizontal Plain Bend, 90°

Item Code	R	Weight	Supply
DM3 BP 90R500	500 mm	4.5 kg	1 set
DM3 BP 90R700	700 mm	5.6 kg	1 set
DM3 BP 90R1000	1000 mm	7.3 kg	1 set

Effective track length:

R500: 1.19m 1-way (2.38m 2-way)

R700: 1.50m 1-way (3.00m 2-way)

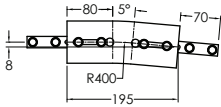
R1000: 1.97m 1-way (3.94m 2-way)

Tolerance:  $\pm 2^\circ$  & Radius:  $\pm 10\text{mm}$

- Connecting strip and screw included.



## Vertical Bends DM3



### Vertical Bend, 5°

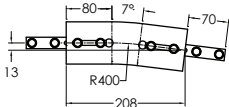
Item Code	Weight	Supply
DM3 BV 5R400	0.8 kg	1 set

Effective track length:

R400: 0.19m 1-way (0.38m 2-way)

Tolerance:  $\pm 2^\circ$  & Radius:  $\pm 10$ mm

- Connecting strip and screw included.



### Vertical Bend, 7°

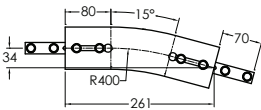
Item Code	Weight	Supply
DM3 BV 7R400	0.8 kg	1 set

Effective track length:

R400: 0.20m 1-way (0.40m 2-way)

Tolerance:  $\pm 2^\circ$  & Radius:  $\pm 10$ mm

- Connecting strip and screw included.



### Vertical Bend, 15°

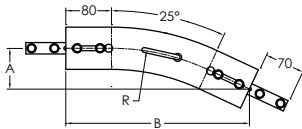
Item Code	Weight	Supply
DM3 BV 15R400	1.0 kg	1 set

Effective track length:

R400: 0.26m 1-way (0.52m 2-way)

Tolerance:  $\pm 2^\circ$  & Radius:  $\pm 10$ mm

- Connecting strip and screw included.



### Vertical Bend, 25°

Item Code	R	A	B	Weight	Supply
DM3 BV 25R400	400 mm	71 mm	322 mm	1.3 kg	1 set
DM3 BV 25R1000	1000 mm	128 mm	575 mm	2.3 kg	1 set

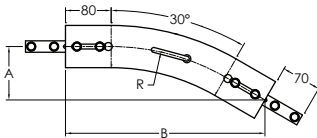
Effective track length:

R400: 0.33m 1-way (0.66m 2-way)

R1000: 0.60m 1-way (1.20m 2-way)

Tolerance:  $\pm 2^\circ$  & Radius:  $\pm 10$ mm

- Connecting strip and screw included.



### Vertical Bend, 30°

Item Code	R	A	B	Weight	Supply
DM3 BV 30R400	400 mm	80 mm	299 mm	1.6 kg	1 set
DM3 BV 30R1000	1000 mm	174 mm	649 mm	3.3 kg	1 set

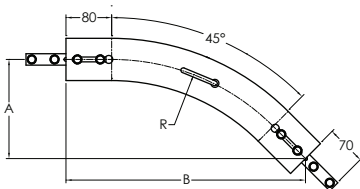
Effective track length:

R400: 0.37m 1-way (0.74m 2-way)

R1000: 0.68m 1-way (1.36m 2-way)

Tolerance:  $\pm 2^\circ$  & Radius:  $\pm 10$ mm

- Connecting strip and screw included.



### Vertical Bend, 45°

Item Code	R	A	B	Weight	Supply
DM3 BV 45R400	400 mm	174 mm	419 mm	1.8 kg	1 set
DM3 BV 45R1000	1000 mm	350 mm	844 mm	3.5 kg	1 set

Effective track length:

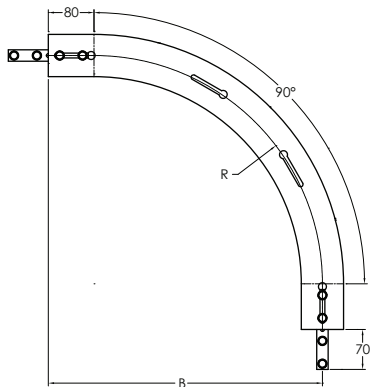
R300: 0.47m 1-way (0.94m 2-way)

R1000: 0.95m 1-way (1.90m 2-way)

Tolerance:  $\pm 2^\circ$  & Radius:  $\pm 10$ mm

- Connecting strip and screw included.

# Vertical Bends DM3 (Continued)



## Vertical Bend, 90°

Item Code	R	B	Weight	Supply
DM3 BV 90R400	400 mm	480 mm	3.0 kg	1 set
DM3 BV 90R1000	1000 mm	1180 mm	6.4 kg	1 set

Effective track length:  
R400: 0.63m 1-way (1.26m 2-way)  
R1000: 1.73m 1-way (3.46m 2-way)  
Tolerance: ± 2° & Radius: ± 10mm  
- Connecting strip and screw included.

\* Non-Standard Vertical Bend also available on PE and Stainless Steel with minimun radius 400mm.

