

Conveyor System ML2



Description

140mm width thermoplastic chain with aluminium frame conveyor system. Also available with stainless steel frame, please refer section DL2.

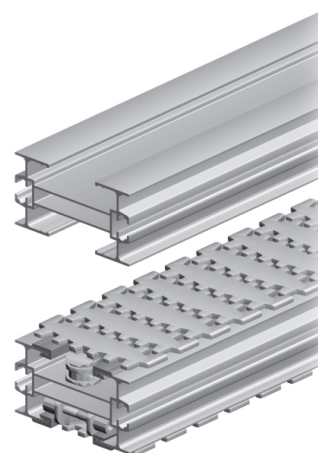
Examples of application industries

Personal Products, Pharmaceutical & Chemical Industry, Automotive & Machined Parts Industry, Food & Packaging Industry, Electrical & Electronic Industry, Paper Converting Industry and Optical Industry

Technical characteristics

Chain Width		140 mm
Chain Pitch		44.5 mm
Chain Weight		2.5 kg/m
Max Tension	With Wheel Bend	1000 N
	Without Wheel Bend	1200 N
Max Product Weight*	Horizontal Transport	25 kg
	Vertical Transport	15 kg
Total Load*		400 Kg
Working Temperature*		-10°C to 60°C
Max Conveyor Length*		30m
Max Speed*		50 m/min
Drive Unit Capacity		1200 N
Item Width*		25-320 mm

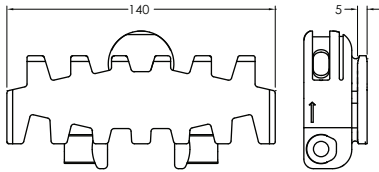
* Actual limit may vary according to conveyor layout and application.



Please consult MODU representative for further information and assistance.

Units: Dimension (mm)

Chains ML2

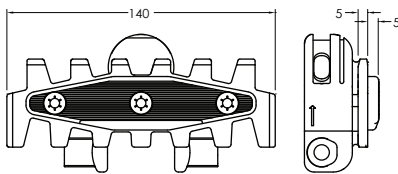


Plain Chain

- Suitable for conveyor configuration with incline/decline up to 5°.
- Accumulation possible.

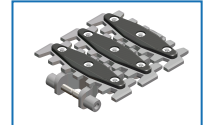


Item Code	Material	Colour	Weight	Supply
ML2 CP 5	POM	White	13.0 kg/roll	5m/roll
ML2 CP 5A	Anti-Static	Black	13.0 kg/roll	5m/roll
ML2 CP 5K	POM-Kevlar	Yellow	15.6 kg/roll	5m/roll

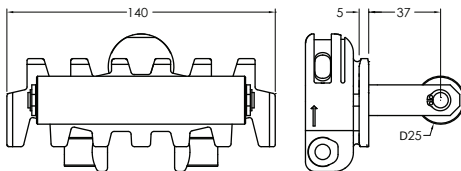


Insert Friction Chain

- Suitable for conveyor configuration with incline/decline up to 25°.
- Friction material : TPE (grey).
- Accumulation not possible.

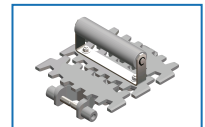


Item Code	Material	Colour	Weight	Supply
ML2 CF 5	POM	White	15.0 kg/roll	5m/roll
ML2 CF 5A	Anti-Static	Black	15.0 kg/roll	5m/roll
ML2 CF 5K	POM-Kevlar	Yellow	17.0 kg/roll	5m/roll

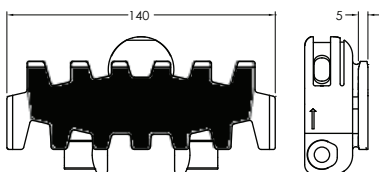


Roller Cleated Chain

- Required for vertical or steeply inclined / declined conveyor.
- Accumulation not possible.
- Not suitable to be use with Combined and Catenary Drive.
- Please specify pitch between cleat for ordering (eg. ML2 CC 3 3p = Every 3rd link to be cleated).
- **Please consult MODU for actual Chain weight.

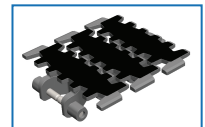


Item Code	Material	Colour	Weight	Supply
ML2 CR 3	POM	White	** kg/roll	3m/roll
ML2 CR 3A	Anti-Static	Black	** kg/roll	3m/roll
ML2 CR 3K	POM-Kevlar	Yellow	** kg/roll	3m/roll

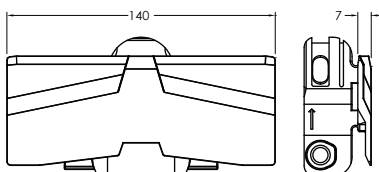


Flocked Chain

- Suitable for scratch sensitive material.
- Flock colour : Grey.
- Accumulation possible for light product only.
- Sticker type only.

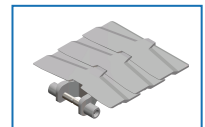


Item Code	Material	Colour	Weight	Supply
ML2 CL 5	POM	White	12.5 kg/roll	5m/roll



Safety Chain

- Suitable for conveyor configuration with incline/decline up to 5°.
- Accumulation possible.

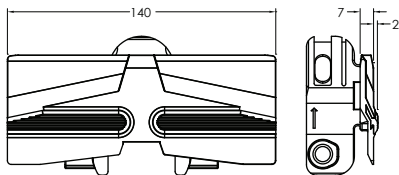


Item Code	Material	Colour	Weight	Supply
ML2 CP 5S	POM	White	12.4 kg/roll	5m/roll

Please consult MODU representative for further information and assistance.

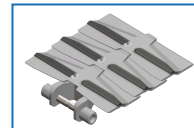
Units: Dimension (mm)

Chains ML2 (Continued)



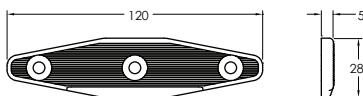
Safety Friction Chain

- Suitable for conveyor configuration with incline/decline up to 25°.
- Friction material : TPE (grey).
- Accumulation not possible.
- PP chain material working tension is less than POM, please refer to technical reference.



Item Code	Material	Colour	Weight	Supply
ML2 CF 5S	PP	White	12.4 kg/roll	5m/roll

Chains Top Replacement ML2



Insert Friction Pad



Item Code	Material	Colour	Weight	Supply
ML2 FP	TPE	Grey	0.01 kg/roll	10 pcs/pkt

Chain Accessories ML2

Lubricant For Chain



Silicone-based lubricant,
400ml

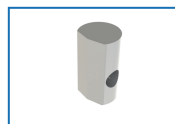
Item Code	Weight	Supply
MA SL	0.35 kg	1 pc

Stainless Steel Pin



Item Code	Weight	Supply
ML2 PN M4x73	0.07 kg	10 pcs/pkt

Chain Pivot



Item Code	Weight	Supply
ML2 PV	0.07 kg	10 pcs/pkt

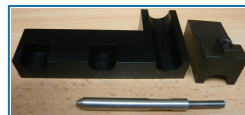
Chain Pin Insertion Tool



Chain pin insertion tool
shown without attachment
& specific drive pin

Item Code	Weight	Supply
TR CP 1	1.2 kg	1 pc

Attachment For Chain Tool

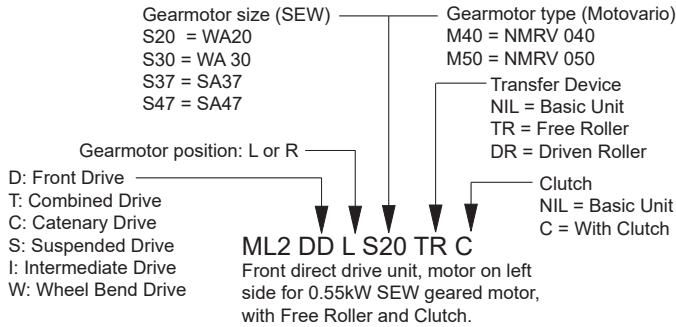


Chain attachment & drive pin

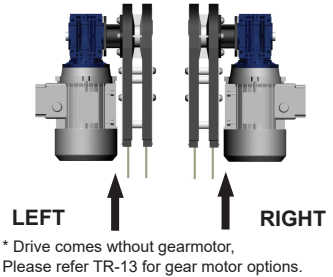
Item Code	Weight	Supply
ML2 AC	0.3 kg	1 set

Drive Units ML2

Item Code Guideline For Drive Units



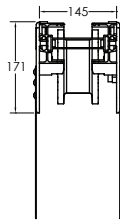
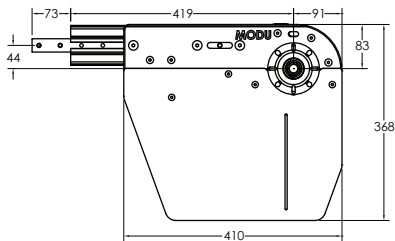
Motor Orientation Guideline



eg. Code for Basic unit; **ML2 DT R M50** => Combined drive unit, motor on right side for Motovario NMRV 050 geared motor.

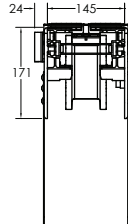
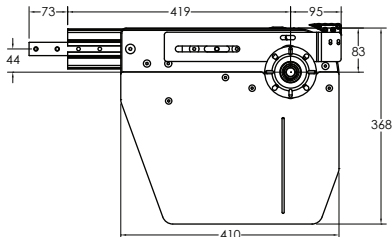
Front Drive Unit

Basic Front Drive



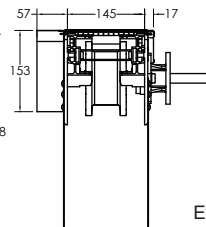
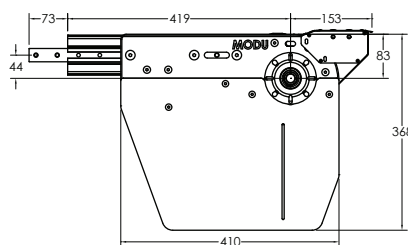
* Comes without Safety Cover

Front Drive with Free Roller



* Comes without Safety Cover

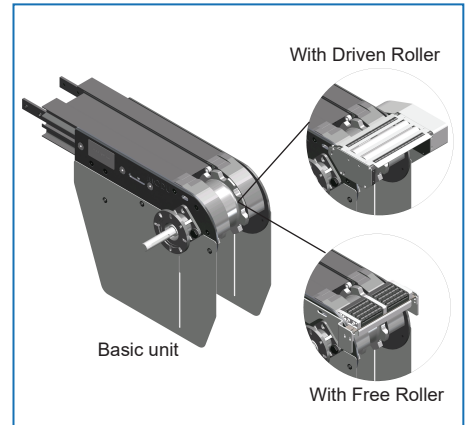
Front Drive with Driven Roller



- Driven Roller speed is approximately 10% higher than conveyor speed.

* Comes without Safety Cover

Effective track length: 1.16m
 Traction force: 1200N



Item Code	Weight	Supply
ML2 DD R/L S/M Basic drive unit	6.3 kg	1 unit
ML2 DD R/L S/M TR With free roller	6.8 kg	1 unit
ML2 DD R/L S/M DR With driven roller	8.3 kg	1 unit

- Connecting strip and set screw included.

Note:

- Safety Cover comes as an option.

- Recommended maximum chain elongation is 368mm from top conveyor to chain slack.

- Refer TR15 for chain effective track length calculation.

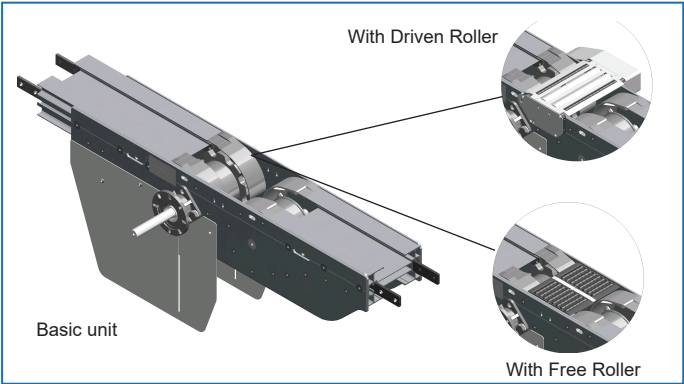
- Cleated Chain is not possible to use on drive with Free Roller or Driven Roller.

Please consult MODU representative for further information and assistance.

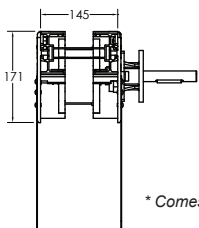
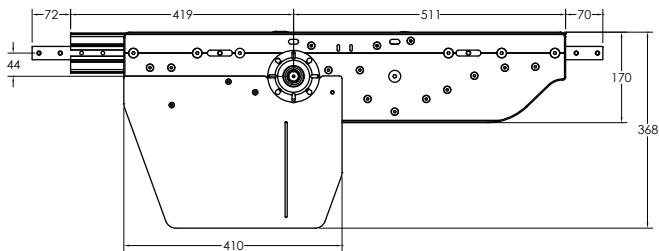
Units: Dimension (mm)

Drive Units ML2 (Continued)

Combined Drive Unit

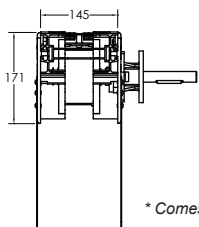
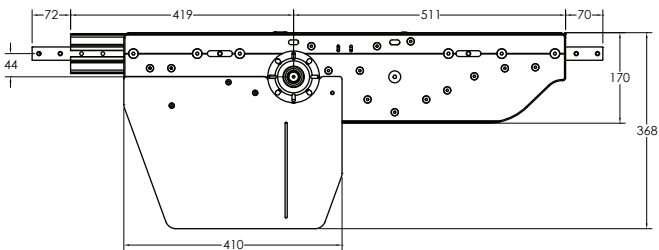


Basic Combined Drive



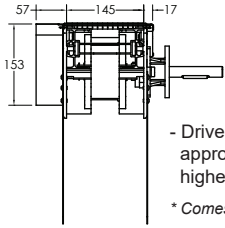
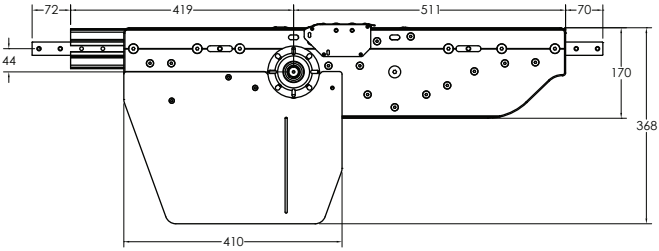
* Comes without Safety Cover

Combined Drive with Free Roller



* Comes without Safety Cover

Combined Drive with Driven Roller



- Driven Roller speed is approximately 10% higher than conveyor speed.

* Comes without Safety Cover

Item Code	Weight	Supply
ML2 DT R/L S/M Basic drive unit	12.0 kg	1 unit
ML2 DT R/L S/M TR With free roller	12.2 kg	1 unit
ML2 DT R/L S/M DR With driven roller	13.8 kg	1 unit

Effective track length: 2.19m
Traction force: 1200N
- Connecting strip and set screw included.

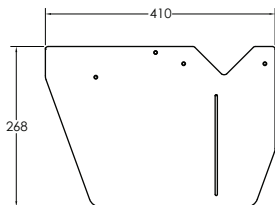
- Note :
- Safety Cover comes as an option.
 - Recommended maximum chain elongation is 328mm from top conveyor to chain slack.
 - Refer TR15 for chain effective track length calculation.
 - Cleated Chain is not possible to use on this drive.

Please consult MODU representative for further information and assistance.

Units: Dimension (mm)

Drive Units ML2 (Continued)

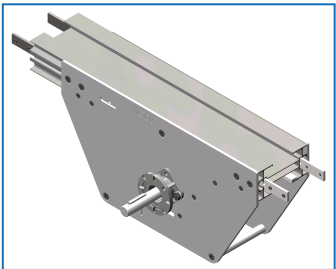
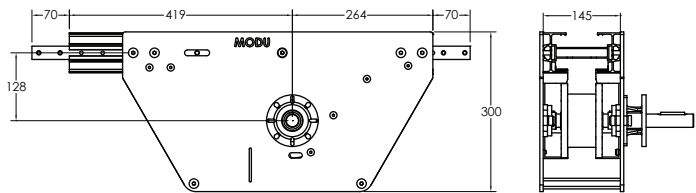
Safety Cover for Front Drive and Combined Drive



- Material : Stainless Steel

Item Code	Weight	Supply
SC2 268	1.8 kg	2 pcs/set

Intermediate Drive Unit



Item Code	Weight	Supply
ML2 DI R/L S/M	14.0 kg	1 unit

Effective track length: 1.49m

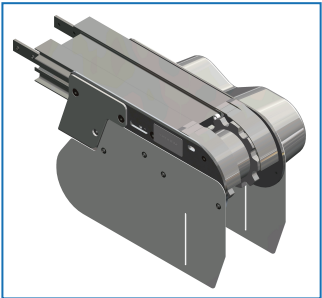
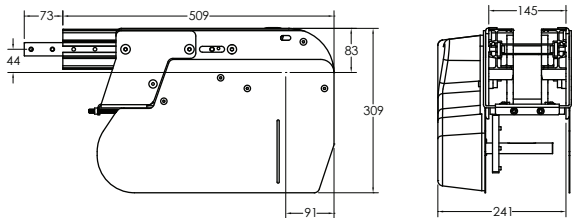
Traction force: 300N

- Connecting strip and set screw included.

Note:

- Refer T

Suspended Drive Unit



Item Code	Weight	Supply
ML2 DS R/L S/M Without Clutch	14.0 kg	1 unit
ML2 DS R/L S/M C With Clutch and roller chain	16.8 kg	1 unit

Effective track length: 1.16m

Traction force: 1200N

- Connecting strip and set screw included.

Note:

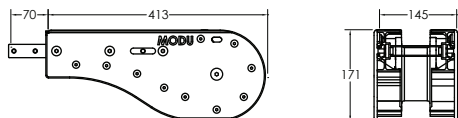
- Refer TR15 for chain effective track length calculation.

Please consult MODU representative for further information and assistance.

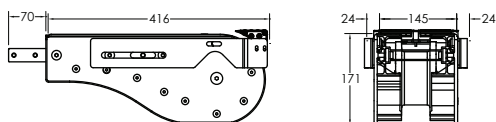
Units: Dimension (mm)

Idler End

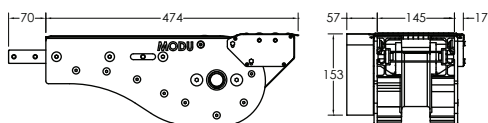
Basic Idler End



Idler End with Free Roller

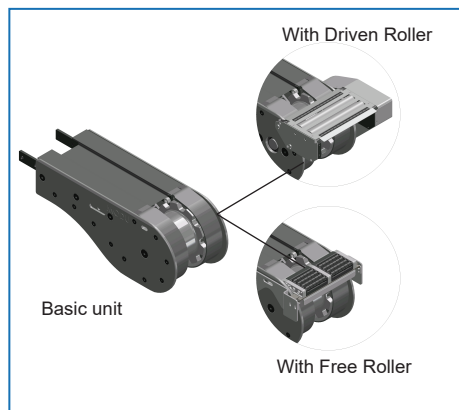


Idler End with Driven Roller
*(Right)



- Driven Roller speed is approximately 10% higher than conveyor speed.

Item Code	Weight	Supply
ML2 IE 400 Basic drive unit	4.1 kg	1 unit
ML2 IE 400 TR With free roller	4.4 kg	1 unit
ML2 IE 400 DR With driven roller	5.9 kg	1 unit



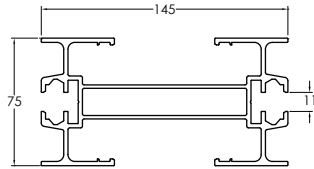
Effective track length: 1.02m

- Connecting strip and set screw included.

Notes:

- Cleated Chain not suitable for Driven Roller & Free Roller.

Conveyor Beam ML2

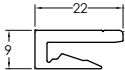


Item Code	Weight	Supply
ML2 CB 3	12.9 kg	3 m

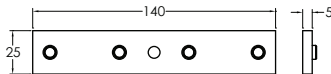


Accessories ML2

Slide Rail



Item Code	Material	Colour	Weight	Supply
MA2 SR 25	HDPE	Pure White	2.8 kg/roll	25m/roll
MA2 SR 25A	Anti-Static	Grey	2.8 kg/roll	25m/roll
MA2 SR 25U	UHMW-PE	Semi-Transparent White	3.5 kg/roll	25m/roll



Connecting Strip

Item Code	Weight	Supply
MA CS 25x140	1.5 kg	10 pcs/pkt

- 4 pcs M8 set screw included.



T-Slot Cover

Item Code	Material	Colour	Weight	Supply
MB SC 25T	TPE	Grey	1.5 kg/roll	25m/roll
MB SC 25P	PVC	Light Grey	1.3 kg/roll	25m/roll



Screw

Item Code	Weight	Supply
MA RS 6.5	0.02 kg	50 pcs/pkt



Slide Rail Cutter

Item Code	Weight	Supply
MA SC	0.5 kg	1 pc



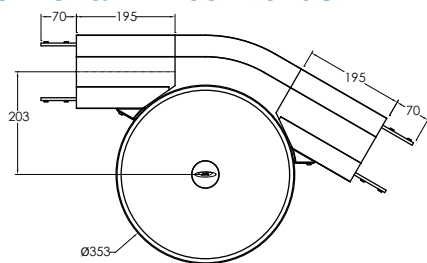
Slide Rail Mounting Tool

Item Code	Weight	Supply
MX2 SRA	0.4 kg	1 pc

Please consult MODU representative for further information and assistance.

Units: Dimension (mm)

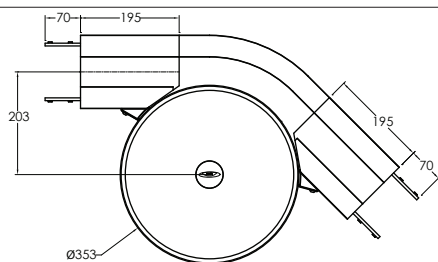
Horizontal Wheel Bends ML2



Wheel Bend, 30°

Item Code	Weight	Supply
ML2 BW 30R200	6.8 kg	1 set

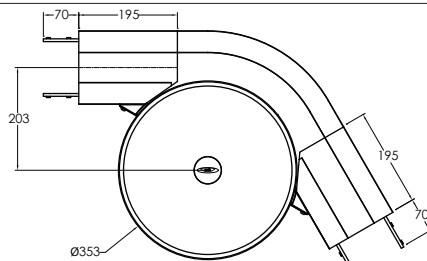
Effective track length:
0.6m 1-way (1.2m 2-way)
Tolerance: $\pm 2^\circ$
- Connecting strip and screw included.



Wheel Bend, 45°

Item Code	Weight	Supply
ML2 BW 45R200	6.9 kg	1 set

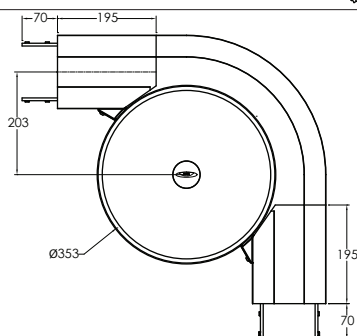
Effective track length:
0.66m 1-way (1.32m 2-way)
Tolerance: $\pm 2^\circ$
- Connecting strip and screw included.



Wheel Bend, 60°

Item Code	Weight	Supply
ML2 BW 60R200	7.0 kg	1 set

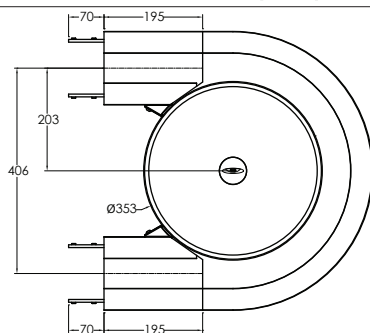
Effective track length:
0.71m 1-way (1.42m 2-way)
Tolerance: $\pm 2^\circ$
- Connecting strip and screw included.



Wheel Bend, 90°

Item Code	Weight	Supply
ML2 BW 90R200	7.2 kg	1 set

Effective track length:
0.81m 1-way (1.62m 2-way)
Tolerance: $\pm 2^\circ$
- Connecting strip and screw included.



Wheel Bend, 180°

Item Code	Weight	Supply
ML2 BW 180R200	6.2 kg	1 set

Effective track length:
1.13m 1-way (2.26m 2-way)
Tolerance: $\pm 2^\circ$
- Connecting strip and screw included.

Please consult MODU representative for further information and assistance.

Units: Dimension (mm)

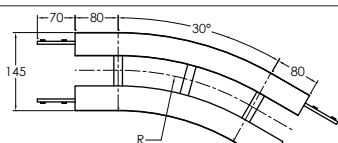
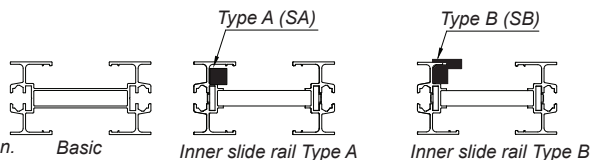
Horizontal Plain Bends ML2

Plain bends comes with options for optimum usage

-Plain bend basic Unit.

-Plain bend with inner slide rail Type A (SA), Material = PE.

-Plain bend with inner slide rail Type B (SB), Material = Nylon.



Effective track length:

R500: 0.42m 1-way (0.84m 2-way)

R700: 0.53m 1-way (1.06m 2-way)

R1000: 0.68m 1-way (1.36m 2-way).

Tolerance: $\pm 2^\circ$ & Radius: $\pm 10\text{mm}$

- Connecting strip and set screw included.

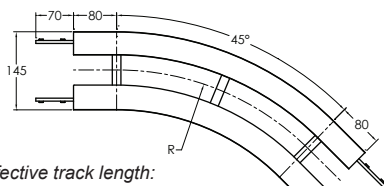
Horizontal Plain Bend, 30°

Without Inner Slide Rail

Item Code	R	Weight	Supply
ML2 BP 30R500	500 mm	2.8 kg	1 set
ML2 BP 30R700	700 mm	3.3 kg	1 set
ML2 BP 30R1000	1000 mm	3.6 kg	1 set

With Inner Slide Rail

Item Code	R	Weight	Supply
ML2 BP 30R500 SA	500 mm	3.2 kg	1 set
ML2 BP 30R700 SA	700 mm	3.8 kg	1 set
ML2 BP 30R1000 SA	1000 mm	4.1 kg	1 set



Effective track length:

R500: 0.55m 1-way (1.10m 2-way)

R700: 0.71m 1-way (1.42m 2-way)

R1000: 0.95m 1-way (1.90m 2-way)

Tolerance: $\pm 2^\circ$ & Radius: $\pm 10\text{mm}$

- Connecting strip and set screw included.

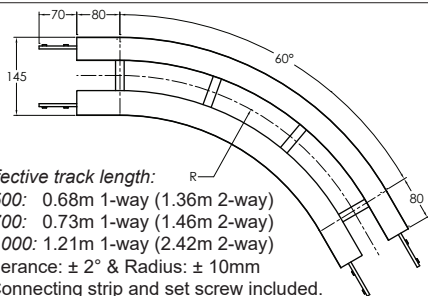
Horizontal Plain Bend, 45°

Without Inner Slide Rail

Item Code	R	Weight	Supply
ML2 BP 45R500	500 mm	3.4 kg	1 set
ML2 BP 45R700	700 mm	4.1 kg	1 set
ML2 BP 45R1000	1000 mm	5.1 kg	1 set

With Inner Slide Rail

Item Code	R	Weight	Supply
ML2 BP 45R500 SA	500 mm	3.7 kg	1 set
ML2 BP 45R700 SA	700 mm	4.8 kg	1 set
ML2 BP 45R1000 SA	1000 mm	5.8 kg	1 set



Effective track length:

R500: 0.68m 1-way (1.36m 2-way)

R700: 0.73m 1-way (1.46m 2-way)

R1000: 1.21m 1-way (2.42m 2-way)

Tolerance: $\pm 2^\circ$ & Radius: $\pm 10\text{mm}$

- Connecting strip and set screw included.

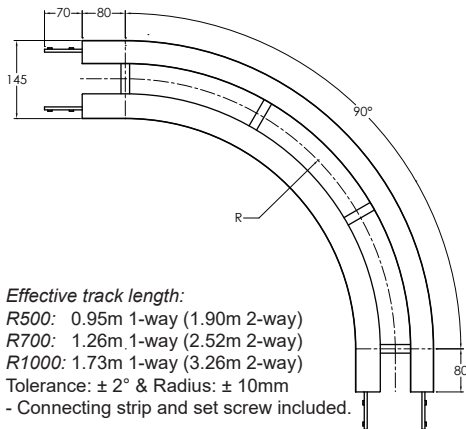
Horizontal Plain Bend, 60°

Without Inner Slide Rail

Item Code	R	Weight	Supply
ML2 BP 60R500	500 mm	3.9 kg	1 set
ML2 BP 60R700	700 mm	4.1 kg	1 set
ML2 BP 60R1000	1000 mm	6.2 kg	1 set

With Inner Slide Rail

Item Code	R	Weight	Supply
ML2 BP 60R500 SA	500 mm	4.3 kg	1 set
ML2 BP 60R700 SA	700 mm	4.7 kg	1 set
ML2 BP 60R1000 SA	1000 mm	6.9 kg	1 set



Effective track length:

R500: 0.95m 1-way (1.90m 2-way)

R700: 1.26m 1-way (2.52m 2-way)

R1000: 1.73m 1-way (3.26m 2-way)

Tolerance: $\pm 2^\circ$ & Radius: $\pm 10\text{mm}$

- Connecting strip and set screw included.

Horizontal Plain Bend, 90°

Without Inner Slide Rail

Item Code	R	Weight	Supply
ML2 BP 90R500	500 mm	5.1 kg	1 set
ML2 BP 90R700	700 mm	6.4 kg	1 set
ML2 BP 90R1000	1000 mm	8.4 kg	1 set

With Inner Slide Rail

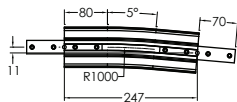
Item Code	R	Weight	Supply
ML2 BP 90R500 SA	500 mm	5.8 kg	1 set
ML2 BP 90R700 SA	700 mm	7.2 kg	1 set
ML2 B2 90R1000 SA	1000 mm	9.3 kg	1 set

* Please refer to MODU representative for Inner Slide Rail Type B.

Please consult MODU representative for further information and assistance.

Units: Dimension (mm)

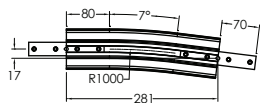
Vertical Bends ML2



Vertical Bend, 5°

Item Code	Weight	Supply
ML2 BV 5R1000	1.6 kg	1 set

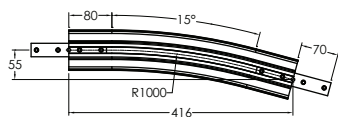
Effective track length:
 R1000: 0.25m 1-way (0.5m 2-way)
 Tolerance: $\pm 2^\circ$ & Radius: ± 10 mm
 - Connecting strip and set screw included.



Vertical Bend, 7°

Item Code	Weight	Supply
ML2 BV 7R1000	1.8 kg	1 set

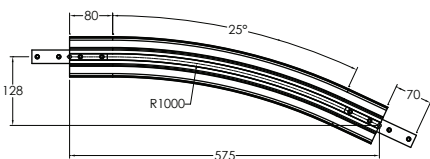
Effective track length:
 R1000: 0.28m 1-way (0.56m 2-way)
 Tolerance: $\pm 2^\circ$ & Radius: ± 10 mm
 - Connecting strip and set screw included.



Vertical Bend, 15°

Item Code	Weight	Supply
ML2 BV 15R1000	2.4 kg	1 set

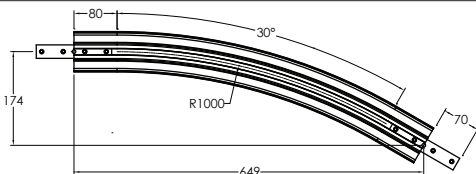
Effective track length:
 R1000: 0.42m 1-way (0.84m 2-way)
 Tolerance: $\pm 2^\circ$ & Radius: ± 10 mm
 - Connecting strip and set screw included.



Vertical Bend, 25°

Item Code	Weight	Supply
ML2 BV 25R1000	3.2 kg	1 set

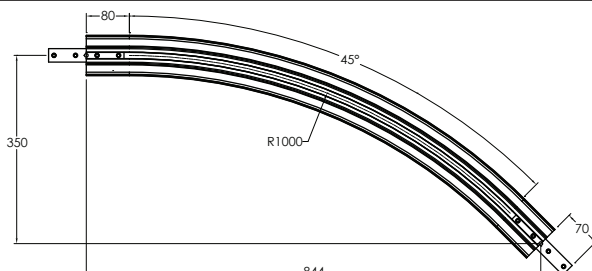
Effective track length:
 R1000: 0.60m 1-way (1.20m 2-way)
 Tolerance: $\pm 2^\circ$ & Radius: ± 10 mm
 - Connecting strip and set screw included.



Vertical Bend, 30°

Item Code	Weight	Supply
ML2 BV 30R1000	3.5 kg	1 set

Effective track length:
 R1000: 0.68m 1-way (1.36m 2-way)
 Tolerance: $\pm 2^\circ$ & Radius: ± 10 mm
 - Connecting strip and set screw included.

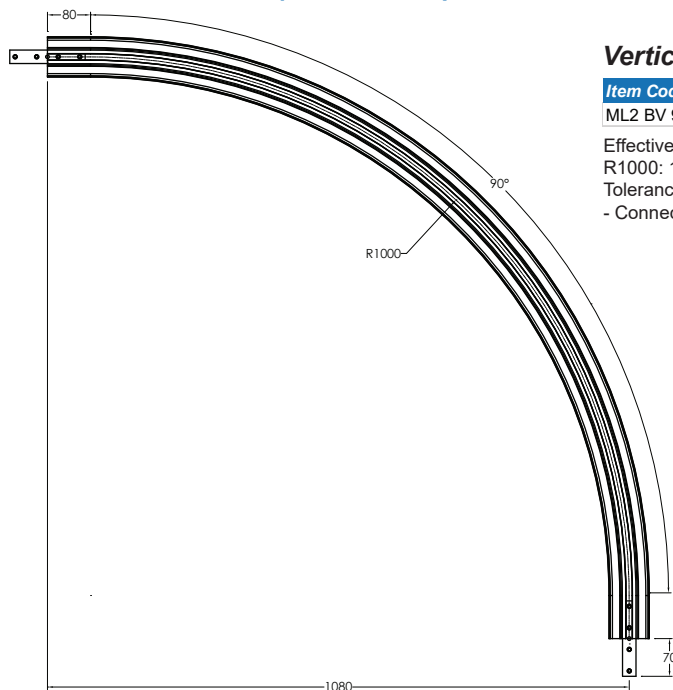


Vertical Bend, 45°

Item Code	Weight	Supply
ML2 BV 45R1000	4.5 kg	1 set

Effective track length:
 R1000: 0.95m 1-way (1.90m 2-way)
 Tolerance: $\pm 2^\circ$ & Radius: ± 10 mm
 - Connecting strip and set screw included.

Vertical Bends ML2 (Continued)



Vertical Bend, 90°

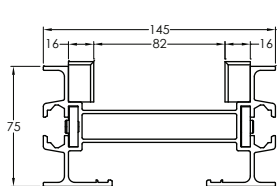
Item Code	Weight	Supply
ML2 BV 90R1000	7.9 kg	1 set

Effective track length:
R1000: 1.73m 1-way (3.46m 2-way)
Tolerance: $\pm 2^\circ$ & Radius: $\pm 10\text{mm}$
- Connecting strip and set screw included.

Notes:

- Non-Standard Vertical Bend only available in PE and Stainless Steel.

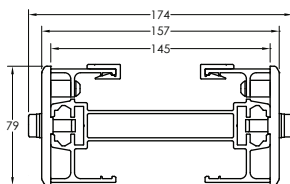
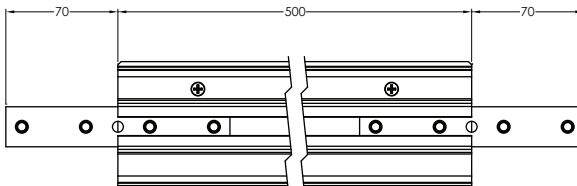
Beam Section For Chain Installation Type A



Type A

Item Code	Weight	Supply
ML2 LU 500	2.2 kg	1 set

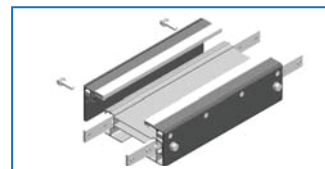
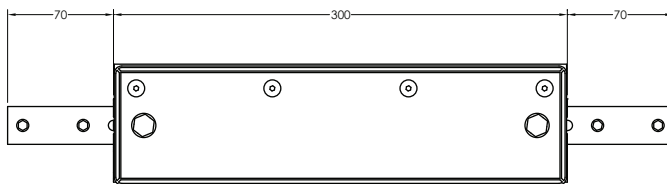
- Connecting strip and set screw included.



Type B

Item Code	Weight	Supply
ML2 CIS 300	2.0 kg	1 set

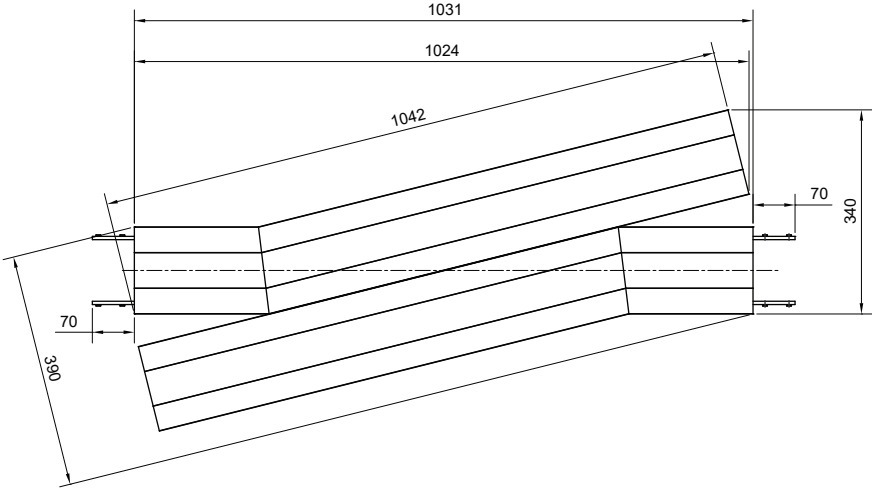
- Slide rail, connecting strip and set screw included.



Please consult MODU representative for further information and assistance.

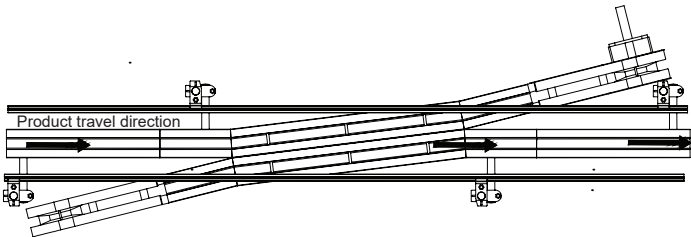
Units: Dimension (mm)

Diagonal Beam



Item Code	Weight	Supply
ML2 DXD	26.3 kg	1 set

- Drive and idler not included.
- Connecting strip and set screw included.
- A combination drive and idler unit used for smooth transferring of unstable products between conveyors.
- All available standard drives fit this unit. Please indicate the drive unit type when placing an order. Refer to page ML2-4 for drive unit order guidelines.



Please consult MODU representative for further information and assistance. Units: Dimension (mm)

