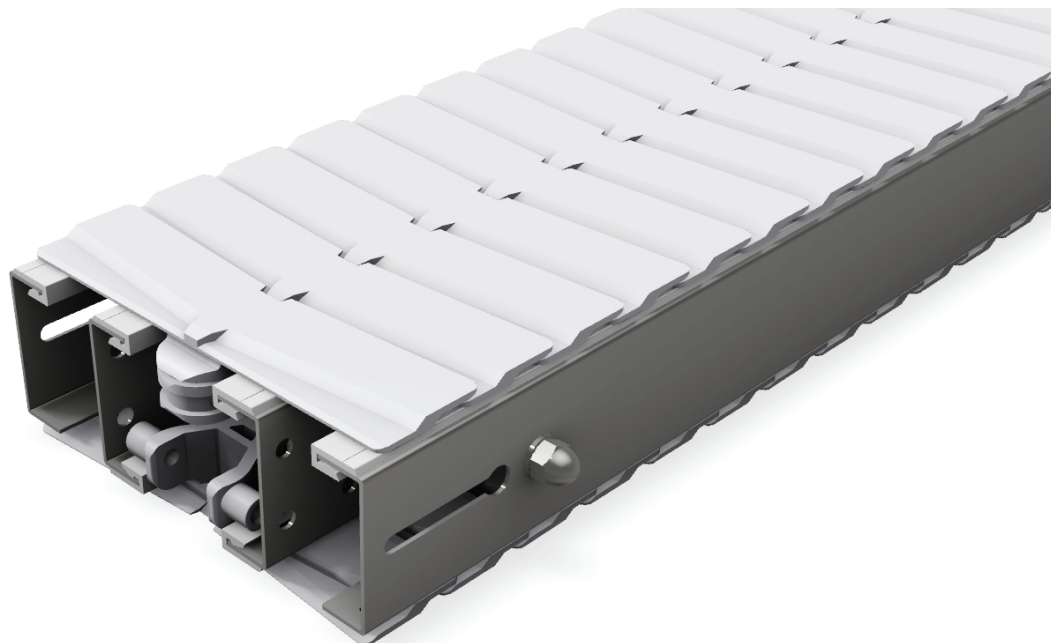


# Conveyor System DX2



## Description

220mm width thermoplastic chain with stainless steel frame conveyor system. Also available with aluminium frame , please refer section MX2.

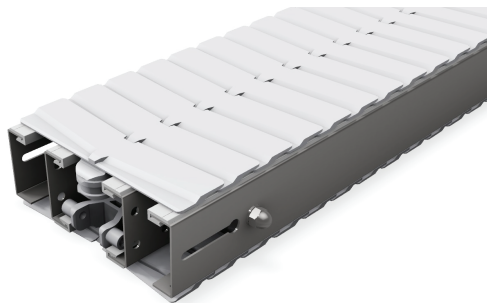
## Examples of application industries

Personal Products, Pharmaceutical & Chemical Industry, Automotive & Machined Parts Industry, Food & Packaging Industry, Electrical & Electronic Industry, Paper Converting Industry and Optical Industry

## Technical characteristics

|                     |                      |               |
|---------------------|----------------------|---------------|
| Chain Width         |                      | 220 mm        |
| Chain Pitch         |                      | 44.5 mm       |
| Chain Weight        |                      | 3.40 kg/m     |
| Max Tension         | With Wheel Bend      | 1000 N        |
|                     | Without Wheel Bend   | 1200 N        |
| Max Product Weight  | Horizontal Transport | 25 kg         |
|                     | Vertical Transport   | 15 kg         |
| Total Load          |                      | 400 Kg        |
| Working Temperature |                      | -10°C to 60°C |
| Max Conveyor Length |                      | 30m           |
| Max Speed           |                      | 50 m/min      |
| Drive Unit Capacity |                      | 1300 N        |
| Item Width          |                      | 70-500 mm     |

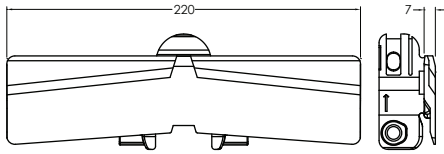
\* Actual limit may vary according to conveyor layout and application.



Please consult MODU representative for further information and assistance.

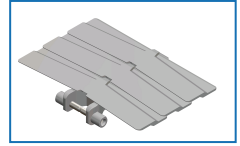
Units: Dimension (mm)

## Chains DX2

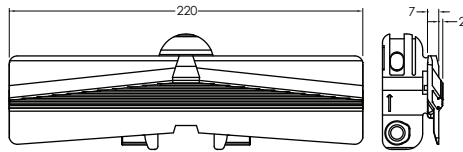


### Plain Chain

- Suitable for conveyor configuration with incline/decline up to 5°.
- Accumulation possible.

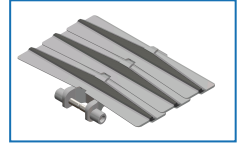


| Item Code | Material | Colour | Weight       | Supply  |
|-----------|----------|--------|--------------|---------|
| MX2 CP 5  | POM      | White  | 17.2 kg/roll | 5m/roll |

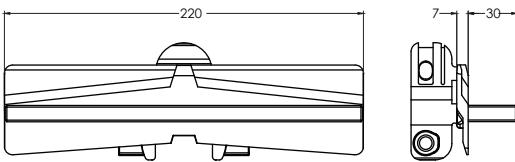


### Friction Chain

- Suitable for conveyor configuration with incline/decline up to 25°.
- Friction material : TPU (grey).
- Accumulation not possible.

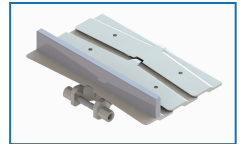


| Item Code | Material | Colour | Weight       | Supply  |
|-----------|----------|--------|--------------|---------|
| MX2 CF 5  | POM      | White  | 18.2 kg/roll | 5m/roll |



### Cleated Chain - PE Cleated (Machine)

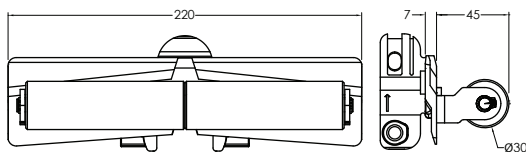
- Required for vertical or steeply inclined / declined conveyor.
- Accumulation not possible.
- Not suitable to be use with Combined and Catenary Drive.
- Pitch between cleat must be indicate while ordering.



(eg. MX2 CC 3 4P = Every 4th link to be cleated).

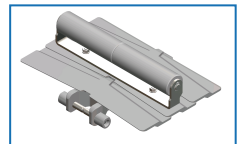
\*\*Please consult MODU representative for actual Chain weight.

| Item Code | Material | Colour | Weight     | Supply  |
|-----------|----------|--------|------------|---------|
| MX2 CC 3  | POM      | White  | ** kg/roll | 5m/roll |



### Roller Cleated Chain

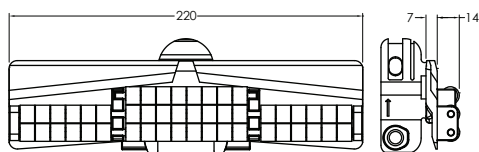
- Required for vertical or steeply inclined / declined conveyor.
- Accumulation not possible.
- Not suitable to be use with Combined and Catenary Drive.
- Pitch between cleat must be indicate while ordering.



(eg. MX2 RC 3 4P = Every 4th link to be cleated).

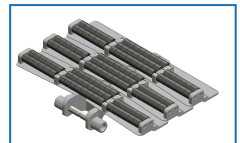
\*\*Please consult MODU representative for actual Chain weight.

| Item Code | Material | Colour | Weight     | Supply  |
|-----------|----------|--------|------------|---------|
| MX2 CR 3  | POM      | White  | ** kg/roll | 5m/roll |



### Roller Top Chain

- Accumulation possible.
- Low back force.



| Item Code | Material | Colour | Weight       | Supply  |
|-----------|----------|--------|--------------|---------|
| MX2 RT 3  | POM      | White  | 22.0 kg/roll | 5m/roll |

Please consult MODU representative for further information and assistance.

Units: Dimension (mm)



Chain Accessories DX2

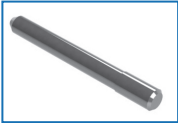
Lubricant For Chain



Silicone-based lubricant,  
400ml

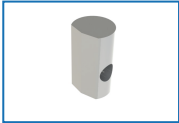
| Item Code | Weight  | Supply |
|-----------|---------|--------|
| MA SL     | 0.35 kg | 1 pc   |

Stainless Steel Pin



| Item Code    | Weight  | Supply     |
|--------------|---------|------------|
| ML2 PN M4x73 | 0.07 kg | 10 pcs/pkt |

Chain Pivot



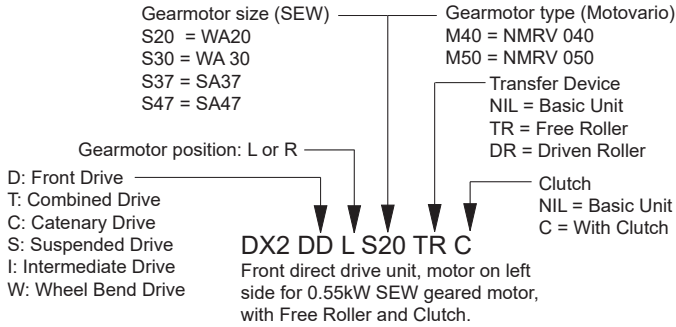
| Item Code | Weight  | Supply     |
|-----------|---------|------------|
| ML2 PV    | 0.07 kg | 10 pcs/pkt |

Please consult MODU representative for further information and assistance.

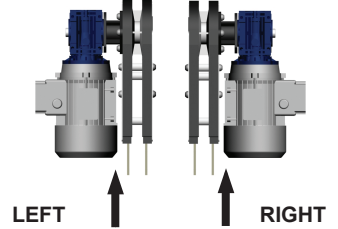
Units: Dimension (mm)

## Drive Units DX2

### Item Code Guideline For Drive Units



### Motor Orientation Guideline

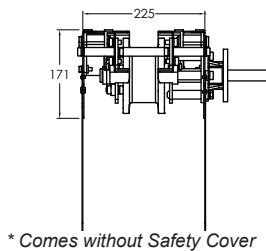
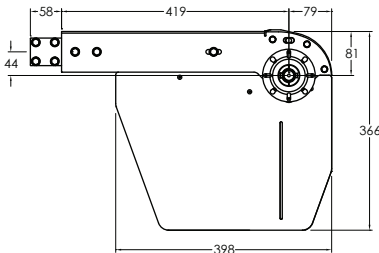


\* Drive comes without gearmotor, Please refer TR-13 for gear motor options.

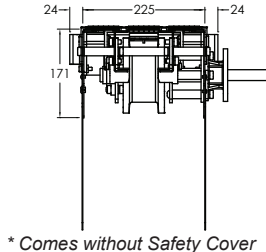
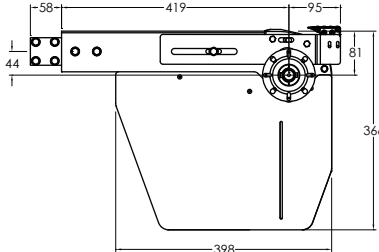
eg. Code for Basic unit; **DX2 DT R M50** => Combined drive unit, motor on right side for Motovario NMRV 050 geared motor.

### Front Drive Unit

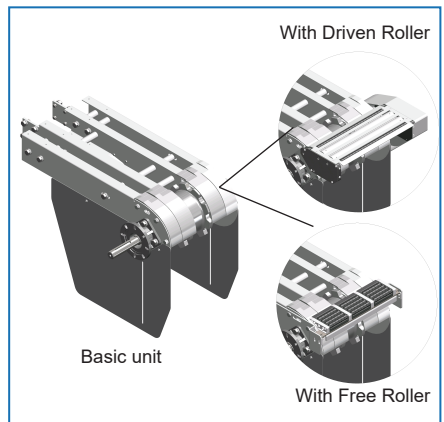
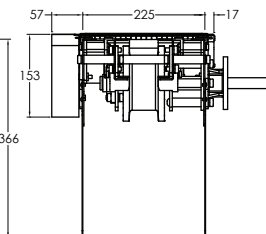
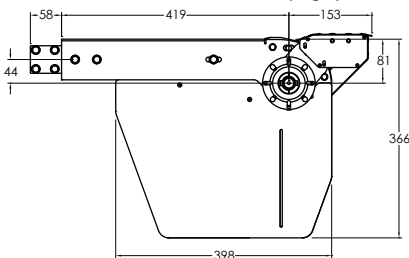
#### Basic Front Drive



#### Front Drive with Free Roller



#### Front Drive with Driven Roller \*(Right)



\* Comes without Safety Cover  
- Driven Roller speed is approximately 10% higher than conveyor speed.

Effective track length: 1.16m  
Traction force: 1200N

| Item Code                               | Weight  | Supply |
|---|---------|--------|
| DX2 DD R/L S/M                          | 8.5 kg  | 1 unit |
| DX2 DD R/L S/M TR<br>With free roller   | 9.0 kg  | 1 unit |
| DX2 DD R/L S/M DR<br>With driven roller | 10.5 kg | 1 unit |

- Connecting strip and screw included.

Note:

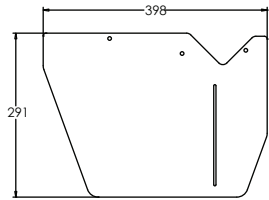
- Safety Cover comes as an option.
- Maximum allowable chain elongation is 366mm from top conveyor to chain slack.
- Refer TR15 for chain effective track length calculation.
- Cleated Chain is not possible to use on drive with Free Roller or Driven Roller.

Please consult MODU representative for further information and assistance.

Units: Dimension (mm)

Drive Units DX2 (Continued)

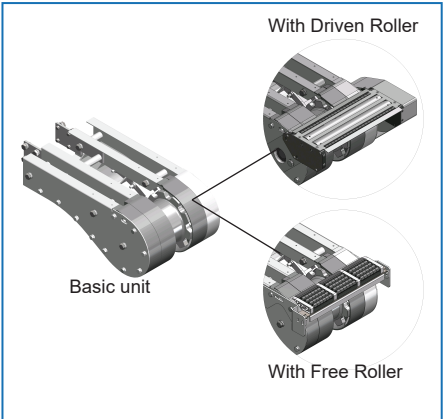
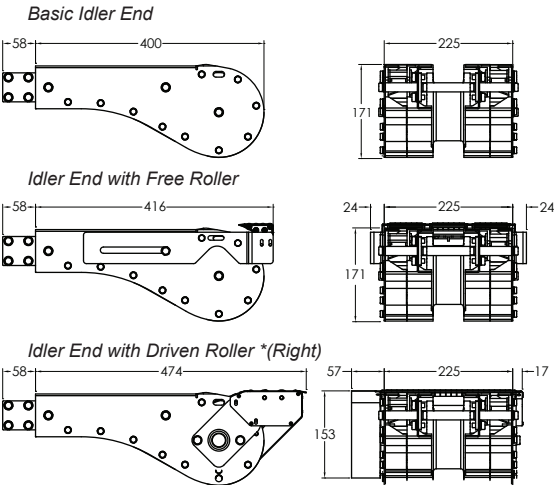
Safety Cover for Front Drive



- Material : Stainless Steel

| Item Code | Weight | Supply    |
|-----------|--------|-----------|
| DSC 268   | 1.8 kg | 2 pcs/set |

Idler End

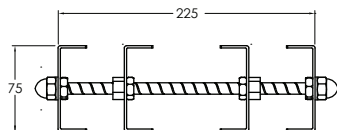


- Driven Roller speed is approximately 10% higher than conveyor speed.

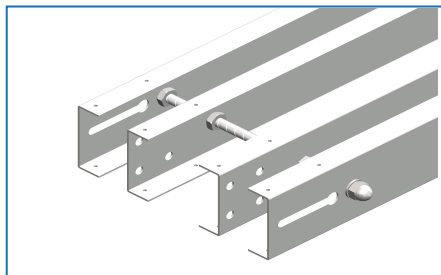
| Item Code                           | Weight  | Supply |
|-------------------------------------|---------|--------|
| DX2 IE 400                          | 8.4 kg  | 1 unit |
| DX2 IE 400 TR<br>With free roller   | 8.6 kg  | 1 unit |
| DX2 IE 400 DR<br>With driven roller | 10.4 kg | 1 unit |

Effective track length: 1.02m  
- Connecting strip and screw included.  
Notes:  
- Cleated Chain not suitable for Driven Roller & Free Roller.

## Conveyor Beam DX2



| Item Code  | Weight  | Supply |
|------------|---------|--------|
| DX2 CB 2.4 | 19.2 kg | 2.4 m  |

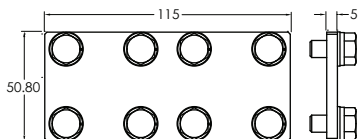


## Accessories DX2



### Slide Rail

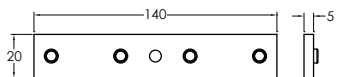
| Item Code  | Material    | Colour                 | Weight      | Supply   |
|------------|-------------|------------------------|-------------|----------|
| MA2 SR 25  | HDPE        | Pure White             | 2.8 kg/roll | 25m/roll |
| MA2 SR 25A | Anti-Static | Grey                   | 2.8 kg/roll | 25m/roll |
| MA2 SR 25U | UHMW-PE     | Semi-Transparent White | 3.5 kg/roll | 25m/roll |



### Connecting Strip

| Item Code        | Weight | Supply     |
|------------------|--------|------------|
| DA CS 5x50.8x115 | 3.0 kg | 10 pcs/pkt |

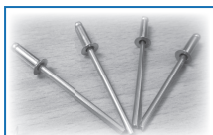
- 8 pcs M8 Screw included.



### Connecting Strip

| Item Code    | Weight | Supply     |
|--------------|--------|------------|
| DA CS 20x140 | 1.5 kg | 10 pcs/pkt |

- 4 pcs M8 set screw included.



### Blind Rivet

| Item Code   | Weight | Supply     |
|-------------|--------|------------|
| DA RB 3.2x9 | 0.2 kg | 10 pcs/pkt |

Material: Stainless Steel



### Slide Rail Cutter

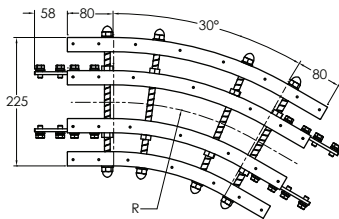
| Item Code | Weight | Supply |
|-----------|--------|--------|
| MA SC     | 0.5 kg | 1 pc   |



### Slide Rail Mounting Tool

| Item Code | Weight | Supply |
|-----------|--------|--------|
| MX2 SRA   | 0.4 kg | 1 pc   |

## Horizontal Plain Bends DX2



### Horizontal Plain Bend, 30°

| Item Code      | R       | Weight | Supply |
|----------------|---------|--------|--------|
| DX2 BP 30R500  | 500 mm  | 5.8 kg | 1 set  |
| DX2 BP 30R700  | 700 mm  | 6.5 kg | 1 set  |
| DX2 BP 30R1000 | 1000 mm | 8.0 kg | 1 set  |

Effective track length:

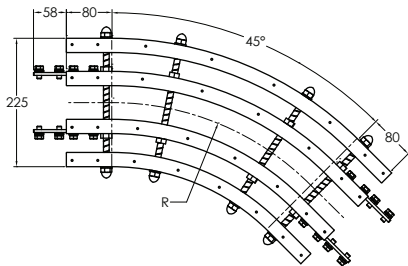
R500: 0.42m 1-way (0.84m 2-way)

R700: 0.53m 1-way (1.06m 2-way)

R1000: 0.68m 1-way (1.36m 2-way).

Tolerance:  $\pm 2^\circ$  & Radius:  $\pm 10$ mm

- Connecting strip and screw included.



### Horizontal Plain Bend, 45°

| Item Code      | R       | Weight  | Supply |
|----------------|---------|---------|--------|
| DX2 BP 45R500  | 500 mm  | 7.0 kg  | 1 set  |
| DX2 BP 45R700  | 700 mm  | 8.5 kg  | 1 set  |
| DX2 BP 45R1000 | 1000 mm | 10.0 kg | 1 set  |

Effective track length:

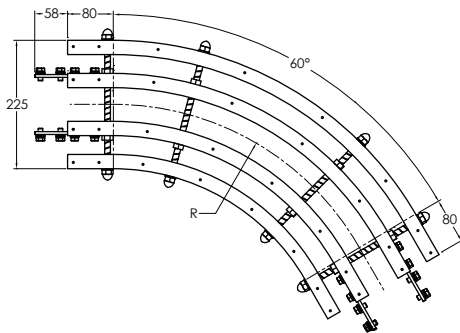
R500: 0.55m 1-way (1.10m 2-way)

R700: 0.71m 1-way (1.42m 2-way)

R1000: 0.95m 1-way (1.90m 2-way)

Tolerance:  $\pm 2^\circ$  & Radius:  $\pm 10$ mm

- Connecting strip and screw included.



### Horizontal Plain Bend, 60°

| Item Code      | R       | Weight  | Supply |
|----------------|---------|---------|--------|
| DX2 BP 60R500  | 500 mm  | 8.0 kg  | 1 set  |
| DX2 BP 60R700  | 700 mm  | 9.5 kg  | 1 set  |
| DX2 BP 60R1000 | 1000 mm | 12.0 kg | 1 set  |

Effective track length:

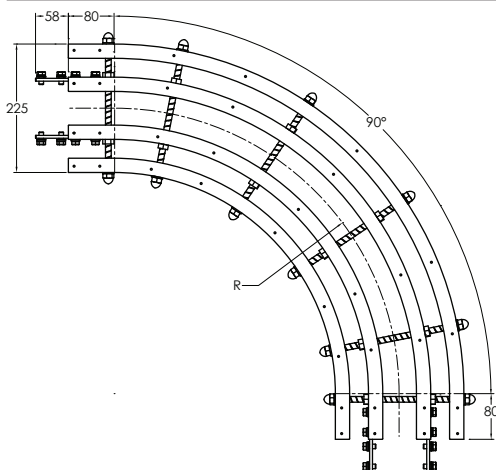
R500: 0.68m 1-way (1.36m 2-way)

R700: 0.73m 1-way (1.46m 2-way)

R1000: 1.21m 1-way (2.42m 2-way)

Tolerance:  $\pm 2^\circ$  & Radius:  $\pm 10$ mm

- Connecting strip and screw included.



### Horizontal Plain Bend, 90°

| Item Code      | R       | Weight  | Supply |
|----------------|---------|---------|--------|
| DX2 BP 90R500  | 500 mm  | 10.5 kg | 1 set  |
| DX2 BP 90R700  | 700 mm  | 13.0 kg | 1 set  |
| DX2 BP 90R1000 | 1000 mm | 14.0 kg | 1 set  |

Effective track length:

R500: 0.95m 1-way (1.90m 2-way)

R700: 1.26m 1-way (2.52m 2-way)

R1000: 1.73m 1-way (3.26m 2-way)

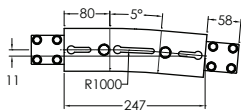
Tolerance:  $\pm 2^\circ$  & Radius:  $\pm 10$ mm

- Connecting strip and screw included.

Please consult MODU representative for further information and assistance.

Units: Dimension (mm)

## Vertical Bends DX2



### Vertical Bend, 5°

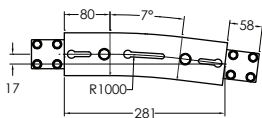
| Item Code     | Weight | Supply |
|---------------|--------|--------|
| DX2 BV 5R1000 | 4.0 kg | 1 set  |

Effective track length:

R1000: 0.25m 1-way (0.5m 2-way)

Tolerance:  $\pm 2^\circ$  & Radius:  $\pm 10$ mm

- Connecting strip and screw included.



### Vertical Bend, 7°

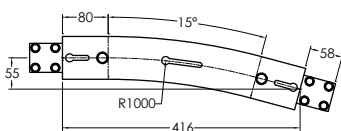
| Item Code     | Weight | Supply |
|---------------|--------|--------|
| DX2 BV 7R1000 | 4.5 kg | 1 set  |

Effective track length:

R1000: 0.28m 1-way (0.56m 2-way)

Tolerance:  $\pm 2^\circ$  & Radius:  $\pm 10$ mm

- Connecting strip and screw included.



### Vertical Bend, 15°

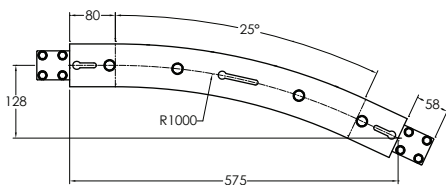
| Item Code      | Weight | Supply |
|----------------|--------|--------|
| DX2 BV 15R1000 | 5.5 kg | 1 set  |

Effective track length:

R1000: 0.42m 1-way (0.84m 2-way)

Tolerance:  $\pm 2^\circ$  & Radius:  $\pm 10$ mm

- Connecting strip and screw included.



### Vertical Bend, 25°

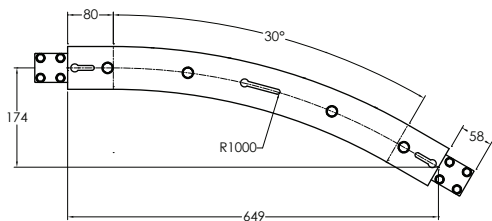
| Item Code      | Weight | Supply |
|----------------|--------|--------|
| DX2 BV 25R1000 | 7.3 kg | 1 set  |

Effective track length:

R1000: 0.60m 1-way (1.20m 2-way)

Tolerance:  $\pm 2^\circ$  & Radius:  $\pm 10$ mm

- Connecting strip and screw included.



### Vertical Bend, 30°

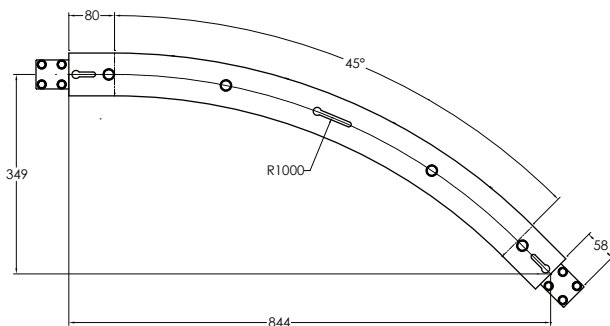
| Item Code      | Weight | Supply |
|----------------|--------|--------|
| DX2 BV 30R1000 | 8.5 kg | 1 set  |

Effective track length:

R1000: 0.68m 1-way (1.36m 2-way)

Tolerance:  $\pm 2^\circ$  & Radius:  $\pm 10$ mm

- Connecting strip and screw included.



### Vertical Bend, 45°

| Item Code      | Weight  | Supply |
|----------------|---------|--------|
| DX2 BV 45R1000 | 10.0 kg | 1 set  |

Effective track length:

R1000: 0.95m 1-way (1.90m 2-way)

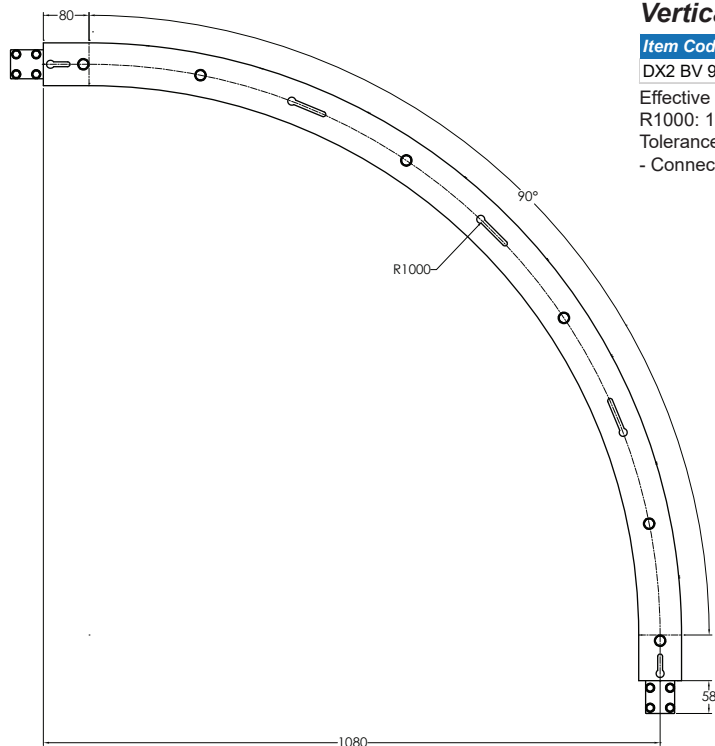
Tolerance:  $\pm 2^\circ$  & Radius:  $\pm 10$ mm

- Connecting strip and screw included.

Please consult MODU representative for further information and assistance.

Units: Dimension (mm)

## Vertical Bends DX2 (Continued)



### Vertical Bend, 90°

| Item Code      | Weight  | Supply |
|----------------|---------|--------|
| DX2 BV 90R1000 | 16.5 kg | 1 set  |

Effective track length:

R1000: 1.73m 1-way (3.46m 2-way)

Tolerance:  $\pm 2^\circ$  & Radius:  $\pm 10\text{mm}$

- Connecting strip and screw included.

Note:

- Non-Standard Vertical Bend only available on PE and Stainless Steel.



