

Conveyor System MX2



Description

220mm width thermoplastic chain with aluminium frame conveyor system. Also available with stainless steel frame, please refer section DX2.

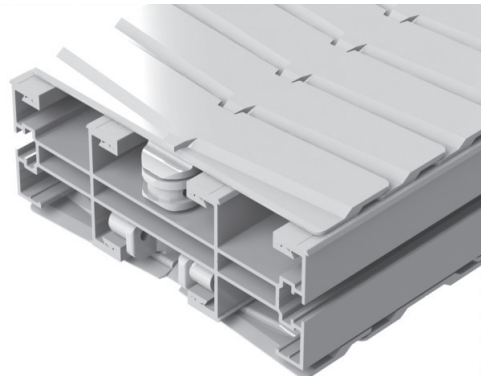
Examples of application industries

Personal Products, Pharmaceutical & Chemical Industry, Automotive & Machined Parts Industry, Food & Packaging Industry, Electrical & Electronic Industry, Paper Converting Industry and Optical Industry

Technical characteristics

Chain Width		220 mm
Chain Pitch		44.5 mm
Chain Weight		3.40 kg/m
Max Tension	With Wheel Bend	1000 N
	Without Wheel Bend	1200 N
Max Product Weight	Horizontal Transport	25 kg
	Vertical Transport	15 kg
Total Load		400 Kg
Working Temperature		-10°C to 60°C
Max Conveyor Length		30m
Max Speed		50 m/min
Drive Unit Capacity		1300 N
Item Width		70-500 mm

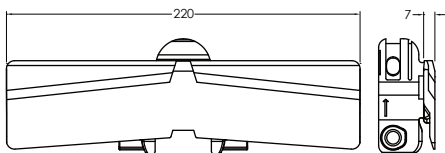
* Actual limit may vary according to conveyor layout and application.



Please consult MODU representative for further information and assistance.

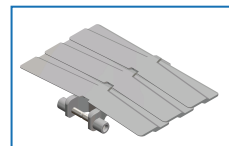
Units: Dimension (mm)

Chains MX2

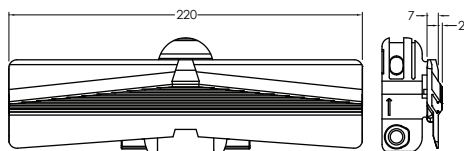


Plain Chain

- Suitable for conveyor configuration with incline/decline up to 5°.
- Accumulation possible.

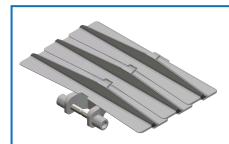


Item Code	Material	Colour	Weight	Supply
MX2 CP 5	POM	White	17.2 kg/roll	5m/roll

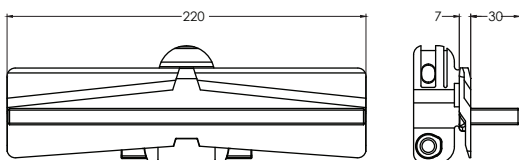


Friction Chain

- Suitable for conveyor configuration with incline/decline up to 25°.
- Friction material : TPU (grey).
- Accumulation not possible.

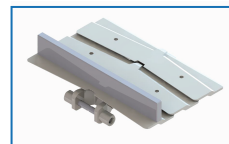


Item Code	Material	Colour	Weight	Supply
MX2 CF 5	POM	White	18.2 kg/roll	5m/roll



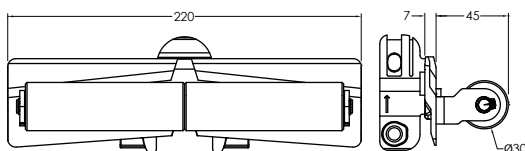
Cleated Chain - PE Cleated (Machine)

- Required for vertical or steeply inclined / declined conveyor.
- Accumulation not possible.
- Not suitable to be use with Combined and Catenary Drive.
- Pitch between cleat must be indicate while ordering.
(eg. MX2 CC 3 4P = Every 4th link to be cleated).



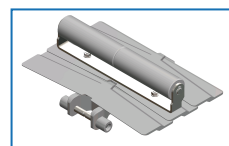
**Please consult MODU representative for actual Chain weight.

Item Code	Material	Colour	Weight	Supply
MX2 CC 3	POM	White	** kg/roll	5m/roll



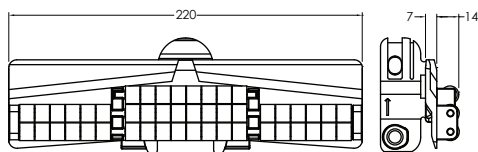
Roller Cleated Chain

- Required for vertical or steeply inclined / declined conveyor.
- Accumulation not possible.
- Not suitable to be use with Combined and Catenary Drive.
- Pitch between cleat must be indicate while ordering.
(eg. MX2 RC 3 4P = Every 4th link to be cleated).



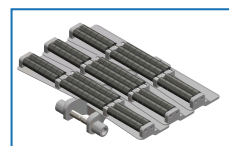
**Please consult MODU representative for actual Chain weight.

Item Code	Material	Colour	Weight	Supply
MX2 CR 3	POM	White	** kg/roll	5m/roll



Roller Top Chain

- Accumulation possible.
- Low back force.



Item Code	Material	Colour	Weight	Supply
MX2 RT 3	POM	White	22.0 kg/roll	5m/roll

Please consult MODU representative for further information and assistance.

Units: Dimension (mm)

Chain Accessories MX2

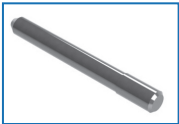
Lubricant For Chain



Silicone-based lubricant,
400ml

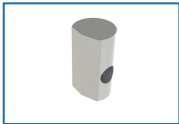
Item Code	Weight	Supply
MA SL	0.35 kg	1 pc

Stainless Steel Pin



Item Code	Weight	Supply
ML2 PN M4x73	0.07 kg	10 pcs/pkt

Chain Pivot



Item Code	Weight	Supply
ML2 PV	0.07 kg	10 pcs/pkt

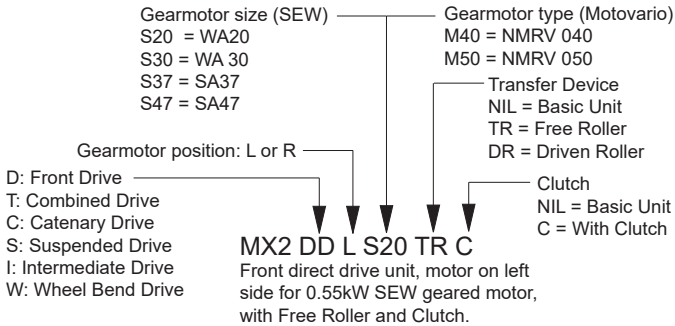
AP
TR
MS2
ML2
MX2
MT2
MR2
MG
MB
MA
DS2
DL2
DX2
DT2
DR2
DF2
DG
DB
DA
SD
SE
TL
IM
MM

Please consult MODU representative for further information and assistance.

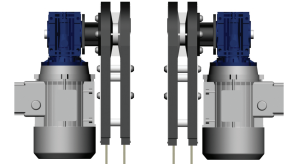
Units: Dimension (mm)

Drive Units MX2

Item Code Guideline For Drive Units



Motor Orientation Guideline



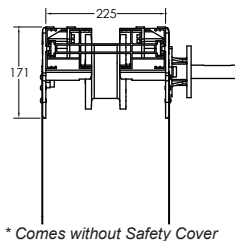
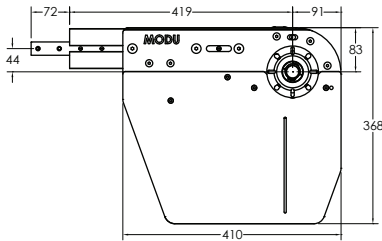
LEFT **RIGHT**

* Drive comes without gearmotor, Please refer TR-13 for gear motor options.

eg. Code for Basic unit; **MX2 DT R M50** => Combined drive unit, motor on right side for Motovario NMRV 050 geared motor.

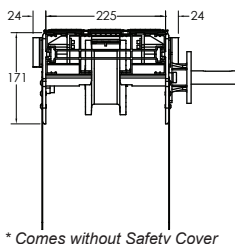
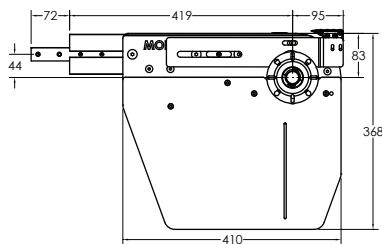
Front Drive Unit

Basic Front Drive



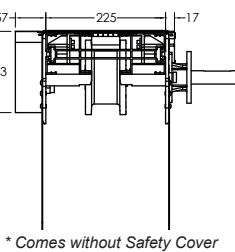
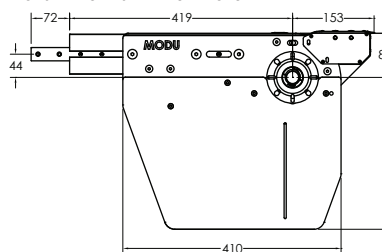
* Comes without Safety Cover

Front Drive with Free Roller

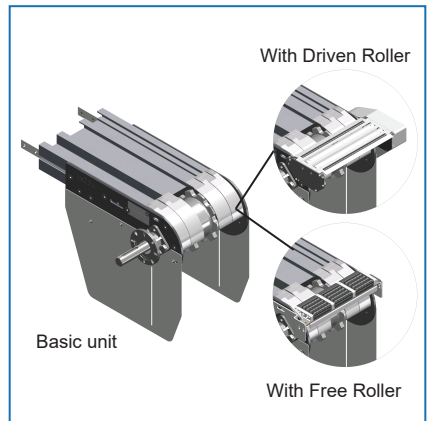


* Comes without Safety Cover

Front Drive with Driven Roller



* Comes without Safety Cover



- Driven Roller speed is approximately 10% higher than conveyor speed.

Item Code	Weight	Supply
MX2 DD R/L S/M Basic drive unit	8.5 kg	1 unit
MX2 DD R/L S/M TR With transfer roller	8.8 kg	1 unit
MX2 DD R/L S/M DR With driven roller	10.3 kg	1 unit

Effective track length: 1.16m

Traction force: 1200N

- Connecting strip and set screw included.

Note:

- Safety Cover comes as an option.

- Max allowable chain elongation is 368mm from top conveyor to chain slack.

- Refer TR15 for chain effective track length calculation.

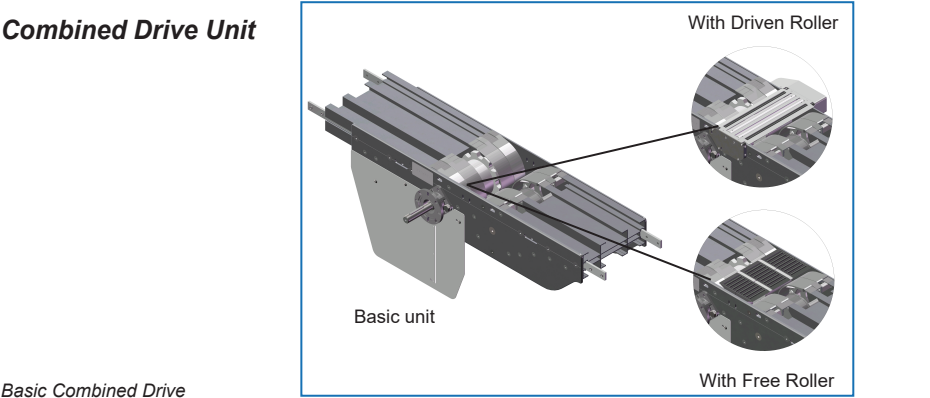
- Cleated Chain is not possible to use on drive with Free Roller or Driven Roller.

Please consult MODU representative for further information and assistance.

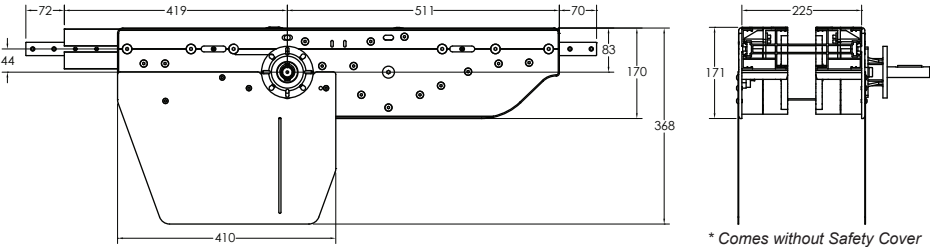
Units: Dimension (mm)

Drive Units MX2 (Continued)

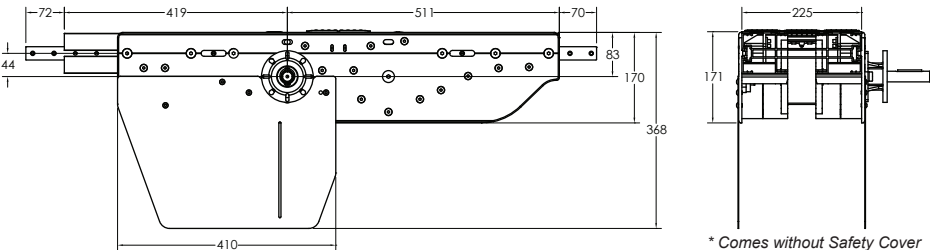
Combined Drive Unit



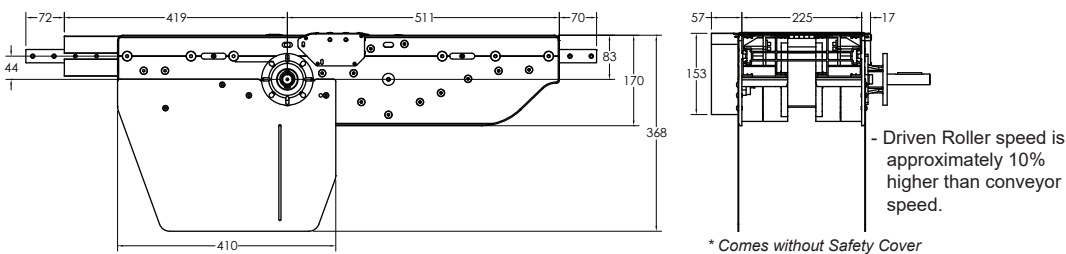
Basic Combined Drive



Combined Drive with Free Roller



Combined Drive with Driven Roller



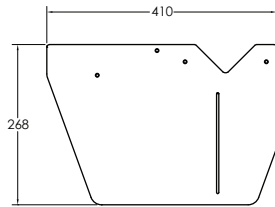
Item Code	Weight	Supply
MX2 DT R/L S/M Basic drive unit	24.0 kg	1 unit
MX2 DT R/L S/M TR With transfer roller	24.2 kg	1 unit
MX2 DT R/L S/M DR With driven roller	26.0 kg	1 unit

- Effective track length: 2.19m
Traction force: 1200N
- Connecting strip and set screw included.
- Note:
- Safety Cover comes as an option.
 - Max allowable chain elongation is 368mm from top conveyor to chain slack.
 - Refer TR15 for chain effective track length calculation.
 - Cleated Chain is not possible to use on this drive.

Please consult MODU representative for further information and assistance. Units: Dimension (mm)

Drive Units MX2 (Continued)

Safety Cover for Front Drive and Combined Drive

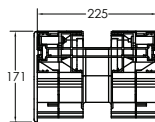
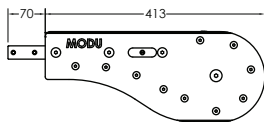


- Material : Stainless Steel

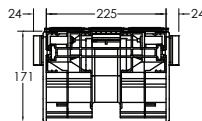
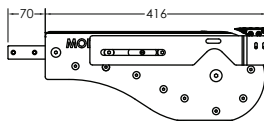
Item Code	Weight	Supply
SC 268	1.8 kg	2 pcs/set

Idler End

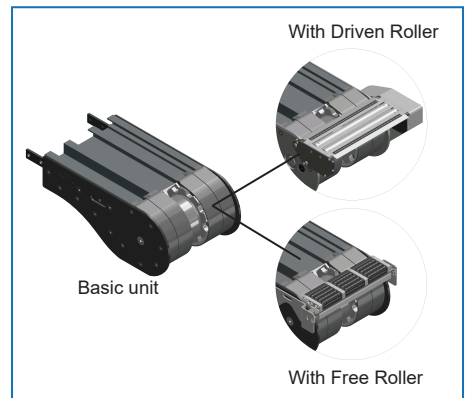
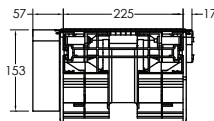
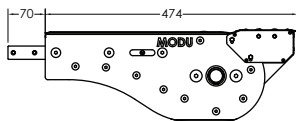
Basic Idler End



Idler End with Free Roller



Idler End with Driven Roller *(Right)



Item Code	Weight	Supply
MX2 IE 320 Basic drive unit	8.4 kg	1 unit
MX2 IE 320 TR With transfer roller	8.6 kg	1 unit
MX2 IE 320 DR With driven roller	10.4 kg	1 unit

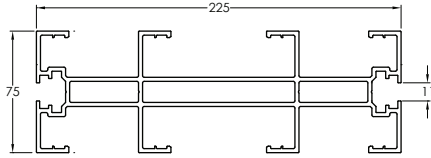
Effective track length: 1.02m

- Connecting strip and set screw included.

Note:

- Cleated Chain not suitable for Driven Roller & Free Roller.

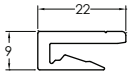
Conveyor Beam MX2



Item Code	Weight	Supply
MX2 CB 3	19.2 kg	3m

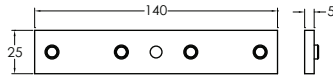


Accessories MX2



Slide Rail

Item Code	Material	Colour	Weight	Supply
MA2 SR 25	HDPE	Pure White	2.8 kg/roll	25m/roll
MA2 SR 25A	Anti-Static	Grey	2.8 kg/roll	25m/roll
MA2 SR 25U	UHMW-PE	Semi-Transparent White	3.5 kg/roll	25m/roll



Connecting Strip

Item Code	Weight	Supply
MA CS 25x140	1.5 kg	10 pcs/pkt

- 4 pcs M8 set screw included.



T-Slot Cover

Item Code	Material	Colour	Weight	Supply
MB SC 25T	TPE	Grey	1.5 kg/roll	25m/roll
MB SC 25P	PVC	Light Grey	1.3 kg/roll	25m/roll



Screw

Item Code	Weight	Supply
MA RS 6.5	0.02 kg	50 pcs/pkt



Slide Rail Cutter

Item Code	Weight	Supply
MA SC	0.5 kg	1 pc



Slide Rail Mounting Tool

Item Code	Weight	Supply
MX2 SRA	0.4 kg	1 pc

Please consult MODU representative for further information and assistance.

Units: Dimension (mm)

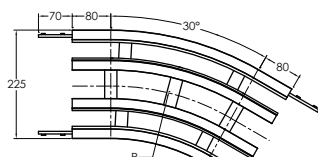
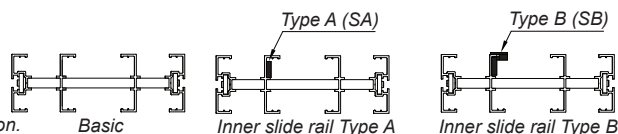
Horizontal Plain Bends MX2

Plain bends comes with options for optimum usage

-Plain bend basic Unit.

-Plain bend with inner slide rail Type A (SA), Material = PE.

-Plain bend with inner slide rail Type B (SB), Material = Nylon.



Effective track length:

R500: 0.42m 1-way (0.84m 2-way)

R700: 0.53m 1-way (1.06m 2-way)

R1000: 0.68m 1-way (1.36m 2-way).

- Connecting strip and set screw included.

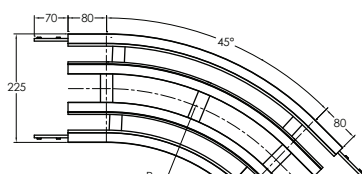
Horizontal Plain Bend, 30°

Without Inner Slide Rail

Item Code	R	Weight	Supply
MX2 BP 30R500	500 mm	3.8 kg	1 set
MX2 BP 30R700	700 mm	4.5 kg	1 set
MX2 BP 30R1000	1000 mm	5.5 kg	1 set

With Inner Slide Rail

Item Code	R	Weight	Supply
MX2 BP 30R500 SA	500 mm	4.3 kg	1 set
MX2 BP 30R700 SA	700 mm	5.0 kg	1 set
MX2 BP 30R1000 SA	1000 mm	6.3 kg	1 set



Effective track length:

R500: 0.55m 1-way (1.10m 2-way)

R700: 0.71m 1-way (1.42m 2-way)

R1000: 0.95m 1-way (1.90m 2-way)

- Connecting strip and set screw included.

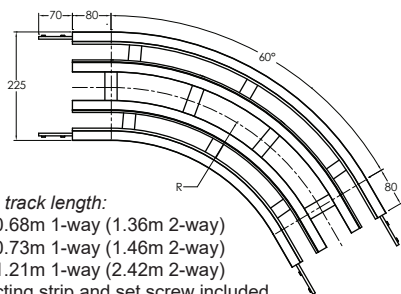
Horizontal Plain Bend, 45°

Without Inner Slide Rail

Item Code	R	Weight	Supply
MX2 BP 45R500	500 mm	4.6 kg	1 set
MX2 BP 45R700	700 mm	5.6 kg	1 set
MX2 BP 45R1000	1000 mm	7.2 kg	1 set

With Inner Slide Rail

Item Code	R	Weight	Supply
MX2 BP 45R500 SA	500 mm	5.1 kg	1 set
MX2 BP 45R700 SA	700 mm	6.1 kg	1 set
MX2 BP 45R1000 SA	1000 mm	8.0 kg	1 set



Effective track length:

R500: 0.68m 1-way (1.36m 2-way)

R700: 0.73m 1-way (1.46m 2-way)

R1000: 1.21m 1-way (2.42m 2-way)

- Connecting strip and set screw included.

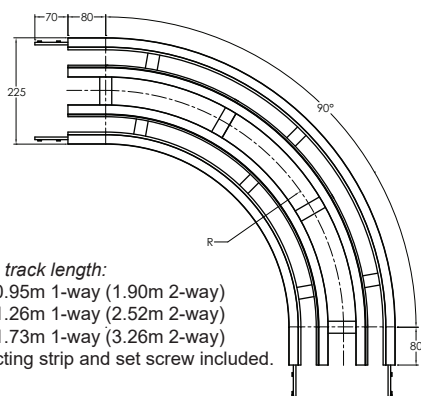
Horizontal Plain Bend, 60°

Without Inner Slide Rail

Item Code	R	Weight	Supply
MX2 BP 60R500	500 mm	5.4 kg	1 set
MX2 BP 60R700	700 mm	5.8 kg	1 set
MX2 BP 60R1000	1000 mm	8.8 kg	1 set

With Inner Slide Rail

Item Code	R	Weight	Supply
MX2 BP 60R500 SA	500 mm	5.9 kg	1 set
MX2 BP 60R700 SA	700 mm	6.3 kg	1 set
MX2 BP 60R1000 SA	1000 mm	9.5 kg	1 set



Effective track length:

R500: 0.95m 1-way (1.90m 2-way)

R700: 1.26m 1-way (2.52m 2-way)

R1000: 1.73m 1-way (3.26m 2-way)

- Connecting strip and set screw included.

Horizontal Plain Bend, 90°

Without Inner Slide Rail

Item Code	R	Weight	Supply
MX2 BP 90R500	500 mm	7.2 kg	1 set
MX2 BP 90R700	700 mm	9.2 kg	1 set
MX2 BP 90R1000	1000 mm	12.2 kg	1 set

With Inner Slide Rail

Item Code	R	Weight	Supply
MX2 BP 90R500 SA	500 mm	7.7 kg	1 set
MX2 BP 90R700 SA	700 mm	9.7 kg	1 set
MX2 BP 90R1000 SA	1000 mm	12.8 kg	1 set

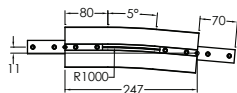
Tolerance: $\pm 2^\circ$ & Radius: $\pm 10\text{mm}$

* Please refer MODU representative for Inner Slide Rail Type B.

Please consult MODU representative for further information and assistance.

Units: Dimension (mm)

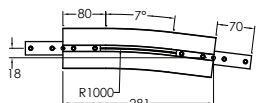
Vertical Bends MX2



Vertical Bend, 5°

Item Code	Weight	Supply
MX2 BV 5R1000	2.1 kg	1 set

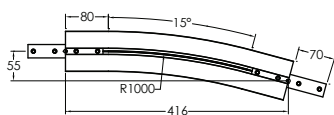
Effective track length:
R1000: 0.25m 1-way (0.5m 2-way)
Tolerance: $\pm 2^\circ$ & Radius: ± 10 mm
- Connecting strip and set screw included.



Vertical Bend, 7°

Item Code	Weight	Supply
MX2 BV 7R1000	2.3 kg	1 set

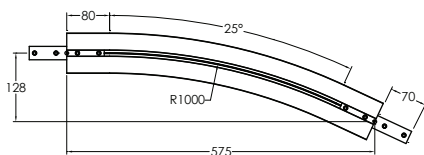
Effective track length:
R1000: 0.28m 1-way (0.56m 2-way)
Tolerance: $\pm 2^\circ$ & Radius: ± 10 mm
- Connecting strip and set screw included.



Vertical Bend, 15°

Item Code	Weight	Supply
MX2 BV 15R1000	3.2 kg	1 set

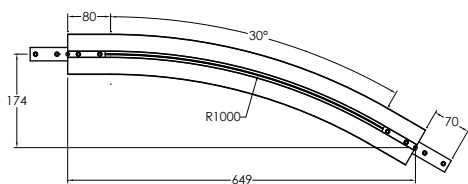
Effective track length:
R1000: 0.42m 1-way (0.84m 2-way)
Tolerance: $\pm 2^\circ$ & Radius: ± 10 mm
- Connecting strip and set screw included.



Vertical Bend, 25°

Item Code	Weight	Supply
MX2 BV 25R1000	4.3 kg	1 set

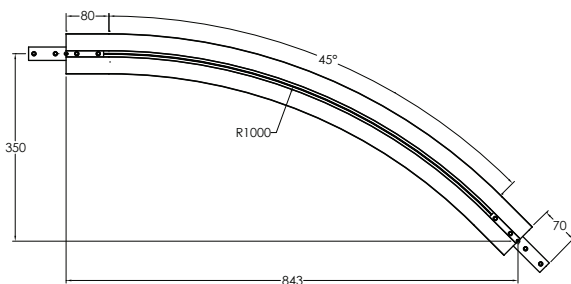
Effective track length:
R1000: 0.60m 1-way (1.20m 2-way)
Tolerance: $\pm 2^\circ$ & Radius: ± 10 mm
- Connecting strip and set screw included.



Vertical Bend, 30°

Item Code	Weight	Supply
MX2 BV 30R1000	5.6 kg	1 set

Effective track length:
R1000: 0.68m 1-way (1.36m 2-way)
Tolerance: $\pm 2^\circ$ & Radius: ± 10 mm
- Connecting strip and set screw included.



Vertical Bend, 45°

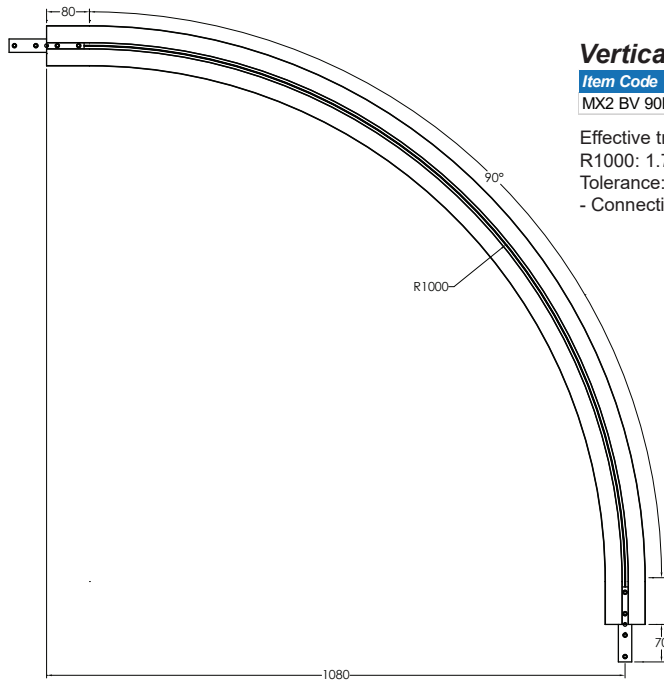
Item Code	Weight	Supply
MX2 BV 45R1000	6.6 kg	1 set

Effective track length:
R1000: 0.95m 1-way (1.90m 2-way)
Tolerance: $\pm 2^\circ$ & Radius: ± 10 mm
- Connecting strip and set screw included.

Please consult MODU representative for further information and assistance.

Units: Dimension (mm)

Vertical Bends MX2 (Continued)



Vertical Bend, 90°

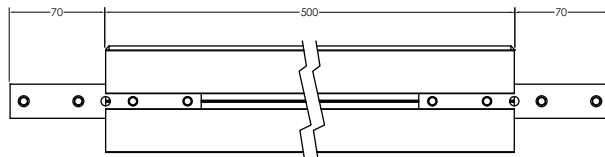
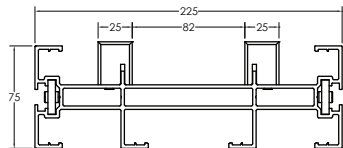
Item Code	Weight	Supply
MX2 BV 90R1000	11.6 kg	1 set

Effective track length:
R1000: 1.73m 1-way (3.46m 2-way)
Tolerance: $\pm 2^\circ$ & Radius: $\pm 10\text{mm}$
- Connecting strip and set screw included.

Notes:

- Non-Standard Vertical Bend only available in PE and Stainless Steel.

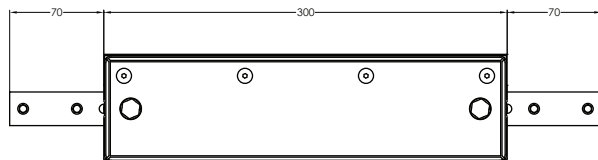
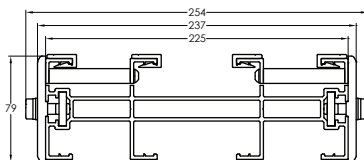
Beam Section For Chain Installation



Type A

Item Code	Weight	Supply
MX2 LU 500	4.0 kg	1 set

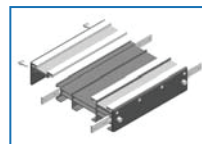
- Connecting strip and set screw included.



Type B

Item Code	Weight	Supply
MX2 CIS 300	3.5 kg	1 set

- Slide rail, connecting strip and set screw included.



Please consult MODU representative for further information and assistance.

Units: Dimension (mm)