

Conveyor System MR2



Description

435mm width thermoplastic chain with aluminium frame conveyor system

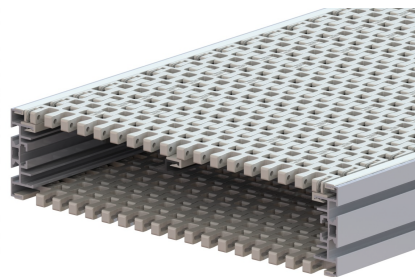
Examples of application industries

Personal Products, Pharmaceutical & Chemical Industry, Automotive & Machined Parts Industry, Food & Packaging Industry, Electrical & Electronic Industry, Paper Converting Industry and Optical Industry

Technical characteristics

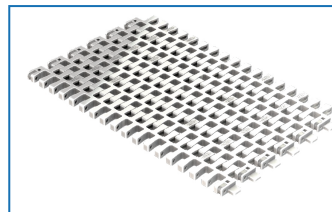
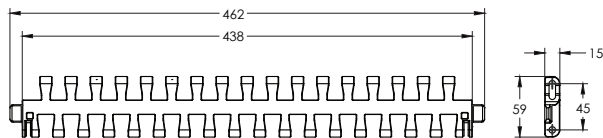
Chain Width		438 mm
Chain Pitch		45 mm
Chain Weight		5.28 kg/m
Chain Maximum Working Tension	With Bend	1800N
	Without Bend	1900N
Max Product Weight*		30 kg
Total Load*		300 Kg
Working Temperature*		-10°C to 60°C
Max Conveyor Length*		30m
Max Speed*		50 m/min
Drive Unit Capacity		1900 N
Item Width*		<600 mm

* Actual limit may vary according to conveyor layout and application.



Chains MR2

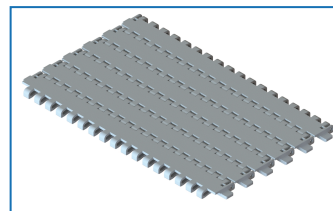
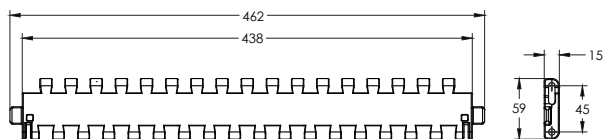
Plastic Curve Belt



- 8.5mm belt gap.
- Suitable for conveyor configuration with incline/decline up to 5°.
- Accumulation possible.

Item Code	Material	Colour	Weight	Supply
MR2 ST CP 5	POM	White	26.4 kg	5m/roll

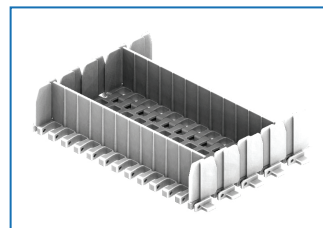
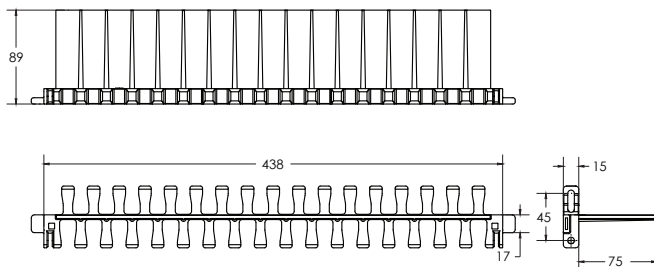
Plastic Straight Belt



- 0mm belt gap.
- Suitable for conveyor configuration with incline/decline up to 5°.
- Accumulation possible.

Item Code	Material	Colour	Weight	Supply
MR2 ZG CP 5	POM	White	28.6 kg	5m/roll

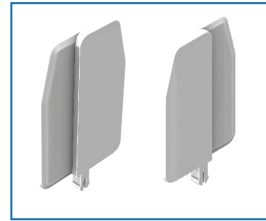
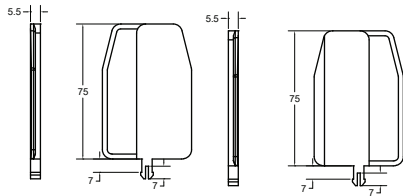
Plastic Cleated Belt



- Required for vertical or steep inclined / declined conveyor.
- Accumulation not possible.
- Not suitable to be use with Combined and Catenary Drive.
- Please specify pitch between cleat for ordering (eg. MR2 ST CC 3x15P 3p = Every 3rd link to be cleated).
- **Please consult MODU representative for actual Chain weight.

Item Code	Material	Colour	Weight	Supply
MR2 ST CC 3	POM	White	-	3m/roll

Side Guard L-R



Item Code	Material	Colour	Weight	Supply
MT2 CLP G-75	POM	White	1.7kg/pack	50pcs/pkt

Chain Accessories MR2

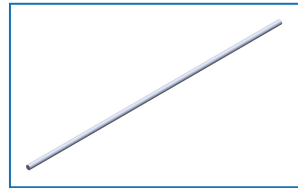
Lubricant For Chain



Item Code	Weight	Supply
MA SL	0.35 kg	1 pc

Silicone-based lubricant, 400ml

Chain Pin



Item Code	Material	Colour	Weight	Supply
MR2 PC	POM	White	0.14kg	10pcs/pkt

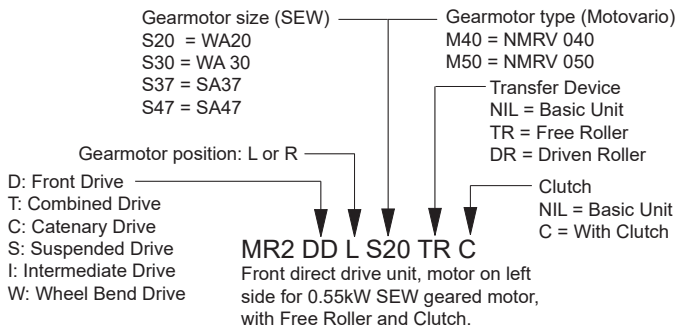
Belt Lock



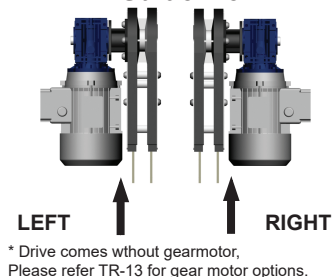
Item Code	Material	Colour	Weight	Supply
MT2 BL	POM	White	0.07kg	10pcs/pkt

Drive Units MR2

Item Code Guideline For Drive Units

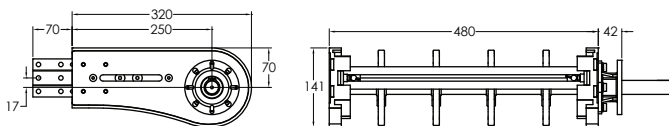


Motor Orientation Guideline



eg. Code for Basic unit; **MR2 DT R M50** => Combined drive unit, motor on right side for Motovario NMRV 050 geared motor.

Front Drive Unit



Item Code	Weight	Supply
MR2 DD R/L S/M	10.4 kg	1 unit

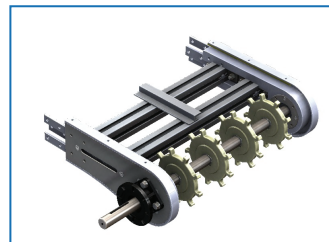
Effective track length: 0.8m

Traction force: 1900N

- Connecting strip and set screw included.

Note:

- Refer TR15 for chain effective track length calculation.



Idler End



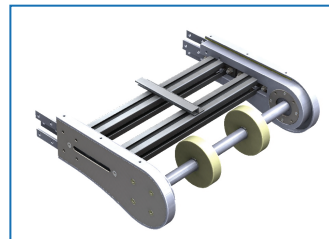
Item Code	Weight	Supply
MR2 IE 320	9.8 kg	1 unit

Effective track length: 0.8m

- Connecting strip and set screw included.

Note:

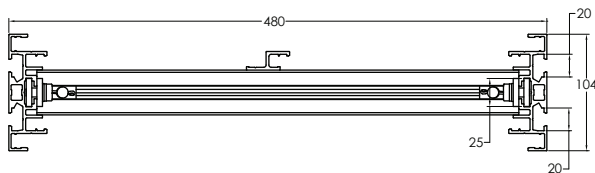
- Refer TR15 for chain effective track length calculation.



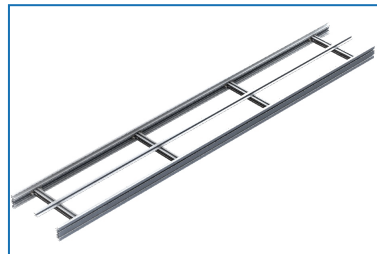
Please consult MODU representative for further information and assistance.

Units: Dimension (mm)

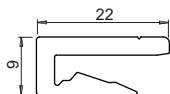
Conveyor Beam MR2



Item Code	Weight	Supply
MR2 CB 3	20.4 kg	3 m

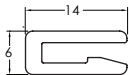


Accessories MR2



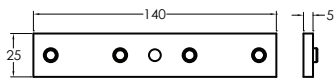
Slide Rail

Item Code	Material	Colour	Weight	Supply
MA2 SR 25	HDPE	Pure White	2.8 kg/roll	25m/roll
MA2 SR 25A	Anti-Static	Grey	2.8 kg/roll	25m/roll
MA2 SR 25U	UHMW-PE	Semi-Transparent White	3.5 kg/roll	25m/roll



Slide Rail

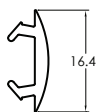
Item Code	Material	Colour	Weight	Supply
MS SR 25	HDPE	Pure White	1.2 kg/roll	25m/roll
MS SR 25A	Anti-Static	Grey	1.2 kg/roll	25m/roll
MS SR 25U	UHMW-PE	Semi-Transparent White	2.7 kg/roll	25m/roll
MS SR 25P	PVDF	Natural white	2.7 kg/roll	25m/roll



Connecting Strip

Item Code	Weight	Supply
MA CS 20x140	1.5 kg	10 pcs/pkt
MA CS 25x140	1.5 kg	10 pcs/pkt

- 4 pcs M8 set screw included.



T-Slot Cover

Item Code	Material	Colour	Weight	Supply
MB SC 25T	TPE	Grey	1.5 kg/roll	25m/roll
MB SC 25P	PVC	Light Grey	1.3 kg/roll	25m/roll



Screw

Item Code	Weight	Supply
MA RS 6.5	0.02 kg	50 pcs/pkt



Rivet

Item Code	Weight	Supply
MA RR 3	0.02 kg	50 pcs/pkt

Material: Brass Nickel plated (3mm)



Slide Rail Assembling Tool

Item Code	Weight	Supply
MT2 SRA	0.4 kg	1 pc



Slide Rail Cutter

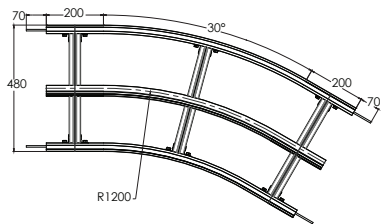
Item Code	Weight	Supply
MA SC	0.5 kg	1 pc

Please consult MODU representative for further information and assistance.

Units: Dimension (mm)

Horizontal Plain Bends MR2

Minimum Turning Radius is R1200



Horizontal Plain Bend, 30°

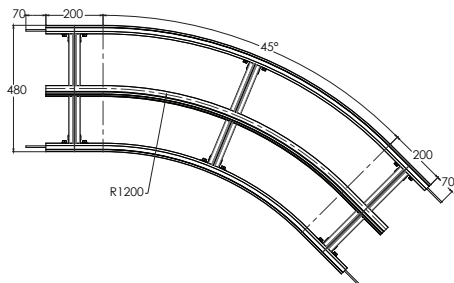
Item Code	R	Weight	Supply
MR2 BP 30R1200	1200 mm	8.9 kg	1 set

Effective track length:

R1200: 1.03m 1-way (2.06m 2-way)

Tolerance: $\pm 2^\circ$ & Radius: ± 10 mm

- Connecting strip and set screw included.



Horizontal Plain Bend, 45°

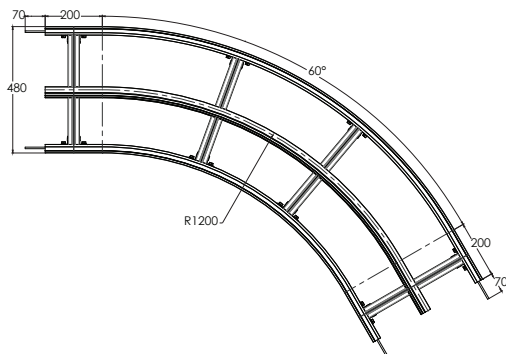
Item Code	R	Weight	Supply
MR2 BP 45R1200	1200 mm	10.5 kg	1 set

Effective track length:

R1200: 1.35m 1-way (2.70m 2-way)

Tolerance: $\pm 2^\circ$ & Radius: ± 10 mm

- Connecting strip and set screw included.



Horizontal Plain Bend, 60°

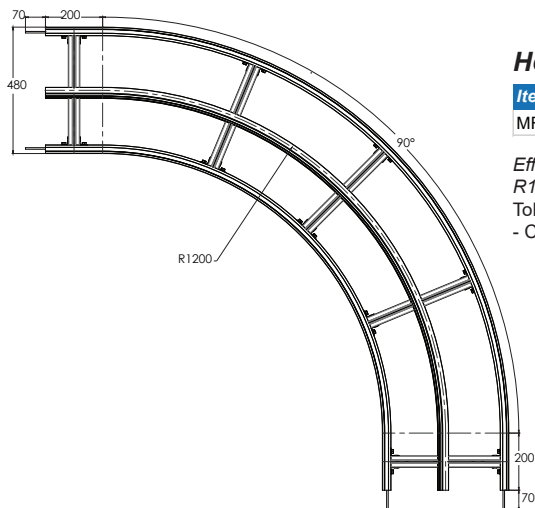
Item Code	R	Weight	Supply
MR2 BP 60R1200	1200 mm	13.2 kg	1 set

Effective track length:

R1200: 1.66m 1-way (3.32m 2-way)

Tolerance: $\pm 2^\circ$ & Radius: ± 10 mm

- Connecting strip and set screw included.



Horizontal Plain Bend, 90°

Item Code	R	Weight	Supply
MR2 BP 90R1200	1200 mm	13.2 kg	1 set

Effective track length:

R1200: 2.29m 1-way (4.58m 2-way)

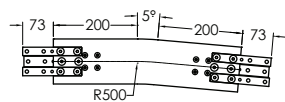
Tolerance: $\pm 2^\circ$ & Radius: ± 10 mm

- Connecting strip and set screw included.

Please consult MODU representative for further information and assistance.

Units: Dimension (mm)

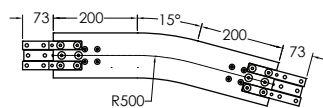
Vertical Bends MR2



Vertical Bend, 5°

Item Code	Weight	Supply
MR2 BV 5R500	5.6 kg	1 set

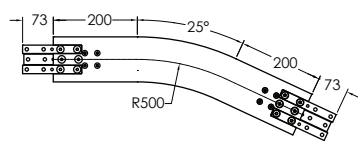
Effective track length:
R500: 0.44m 1-way (0.88m 2-way)
Tolerance: $\pm 2^\circ$ & Radius: $\pm 10\text{mm}$
- Connecting strip and set screw included.



Vertical Bend, 15°

Item Code	Weight	Supply
MR2 BV 15R500	6.5 kg	1 set

Effective track length:
R500: 0.53m 1-way (1.06m 2-way)
Tolerance: $\pm 2^\circ$ & Radius: $\pm 10\text{mm}$
- Connecting strip and set screw included.

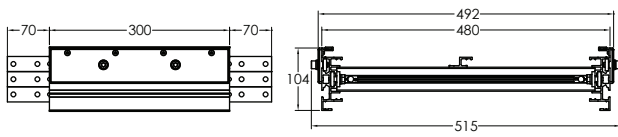


Vertical Bend, 25°

Item Code	Weight	Supply
MR2 BV 25R500	7.1 kg	1 set

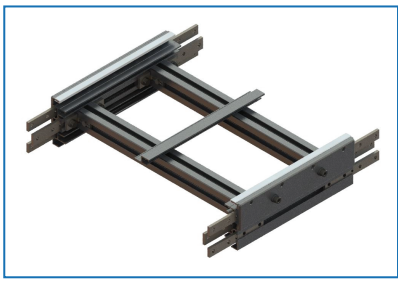
Effective track length:
R500: 0.62m 1-way (1.24m 2-way)
Tolerance: $\pm 2^\circ$ & Radius: $\pm 10\text{mm}$
- Connecting strip and set screw included.

Chain Installation Section



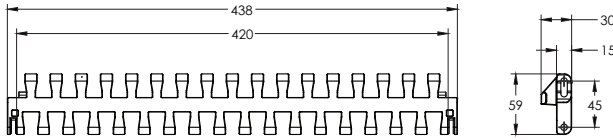
Item Code	Weight	Supply
MR2 CIS 300	5.3 kg	1 Unit

- Connecting strip and set screw included.

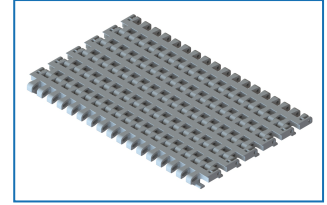


Chains MR2 (BT)

Plastic Curve Belt (Bottom Tab)

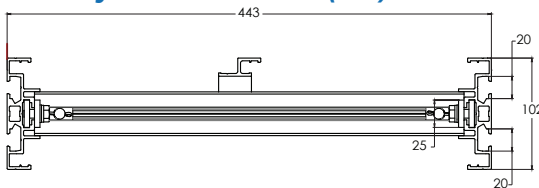


- 8.5mm belt gap.
- Suitable for conveyor configuration with incline/decline up to 5°.
- Accumulation possible.

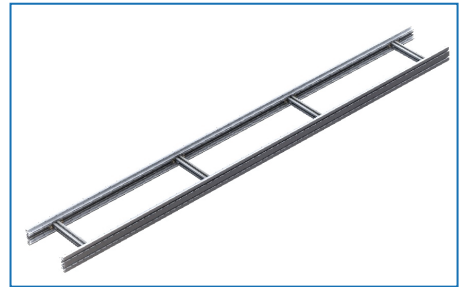


Item Code	Material	Colour	Weight	Supply
MR2 BT CP 5	POM	White	26.4 kg/roll	5m/roll

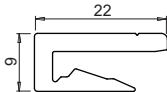
Conveyor Beam MR2 (BT)



Item Code	Weight	Supply
MR2 BT CB 3	20.4 kg	3 m

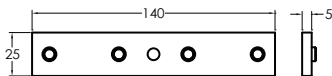


Accessories MR2



Slide Rail

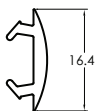
Item Code	Material	Colour	Weight	Supply
MA2 SR 25	HDPE	Pure White	2.8 kg/roll	25m/roll
MA2 SR 25A	Anti-Static	Grey	2.8 kg/roll	25m/roll
MA2 SR 25U	UHMW-PE	Semi-Transparent White	3.5 kg/roll	25m/roll



Connecting Strip

Item Code	Weight	Supply
MA CS 20x140	1.5 kg	10 pcs/pkt
MA CS 25x140	1.5 kg	10 pcs/pkt

- 4 pcs M8 set screw included.



T-Slot Cover

Item Code	Material	Colour	Weight	Supply
MB SC 25T	TPE	Grey	1.5 kg/roll	25m/roll
MB SC 25P	PVC	Light Grey	1.3 kg/roll	25m/roll



Screw

Item Code	Weight	Supply
MA RS 6.5	0.02 kg	50 pcs/pkt



Slide Rail Assembling Tool

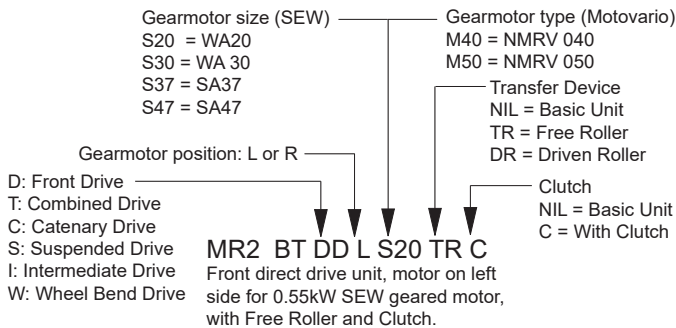
Item Code	Weight	Supply
MT2 SRA	0.4 kg	1 pc

Please consult MODU representative for further information and assistance.

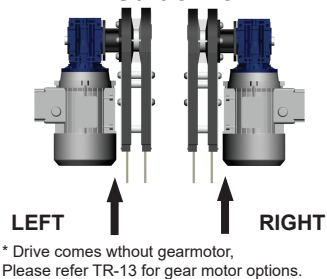
Units: Dimension (mm)

Drive Units MR2 (BT)

Item Code Guideline For Drive Units

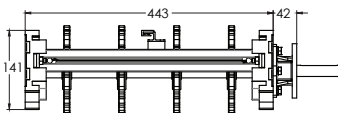
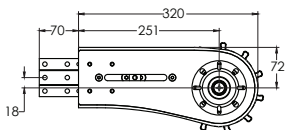


Motor Orientation Guideline



eg. Code for Basic unit; **MR2 BT DD R M50** => Front drive unit for bottom tab chain, motor on right side for Motovario NMRV 050 geared motor.

Front Drive Unit (BT)



Item Code	Weight	Supply
MR2 BT DD R/L S/M	10.4 kg	1 unit

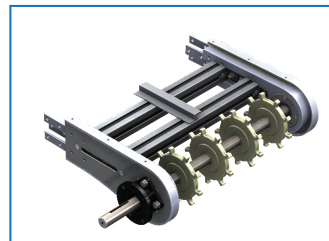
Effective track length: 0.8m

Traction force: 1900N

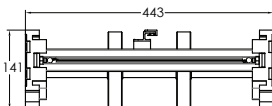
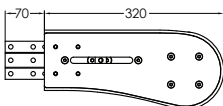
- Connecting strip and set screw included.

Note:

- Refer TR15 for chain effective track length calculation.



Idler End (BT)



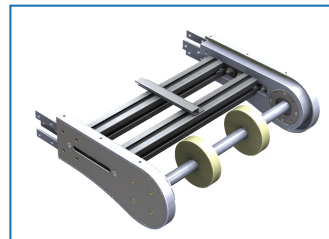
Item Code	Weight	Supply
MR2 BT IE 320	9.8 kg	1 unit

Effective track length: 0.8m

- Connecting strip and set screw included.

Note:

- Refer TR15 for chain effective track length calculation.

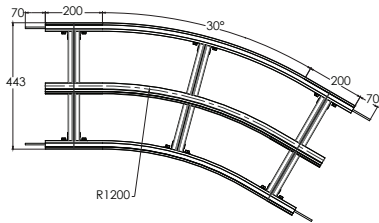


Please consult MODU representative for further information and assistance.

Units: Dimension (mm)

Horizontal Plain Bends MR2 (BT)

Minimum Turning Radius is R1200



Horizontal Plain Bend, 30°

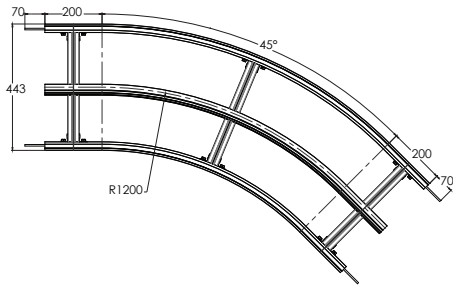
Item Code	R	Weight	Supply
MR2 BT BP 30R1200	1200 mm	8.9 kg	1 set

Effective track length:

R1200: 1.03m 1-way (2.06m 2-way)

Tolerance: $\pm 2^\circ$ & Radius: $\pm 10\text{mm}$

- Connecting strip and set screw included.



Horizontal Plain Bend, 45°

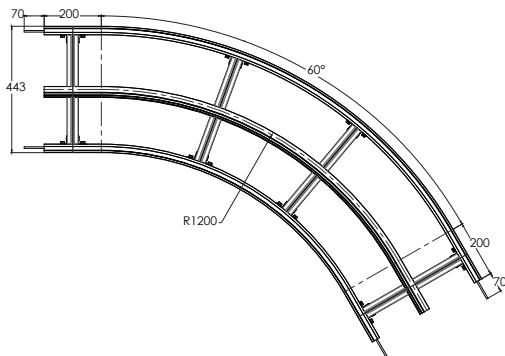
Item Code	R	Weight	Supply
MR2 BT BP 45R1200	1200 mm	10.5 kg	1 set

Effective track length:

R1200: 1.35m 1-way (2.70m 2-way)

Tolerance: $\pm 2^\circ$ & Radius: $\pm 10\text{mm}$

- Connecting strip and set screw included.



Horizontal Plain Bend, 60°

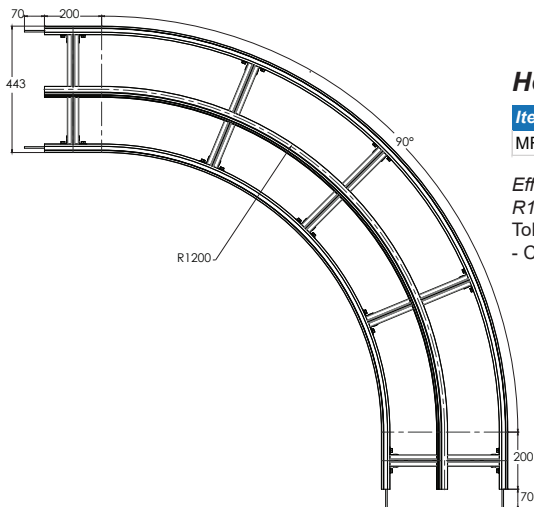
Item Code	R	Weight	Supply
MR2 BT BP 60R1200	1200 mm	13.2 kg	1 set

Effective track length:

R1200: 1.66m 1-way (3.32m 2-way)

Tolerance: $\pm 2^\circ$ & Radius: $\pm 10\text{mm}$

- Connecting strip and set screw included.



Horizontal Plain Bend, 90°

Item Code	R	Weight	Supply
MR2 BT BP 90R1200	1200 mm	13.2 kg	1 set

Effective track length:

R1200: 2.29m 1-way (4.58m 2-way)

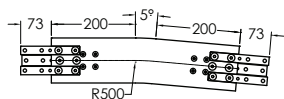
Tolerance: $\pm 2^\circ$ & Radius: $\pm 10\text{mm}$

- Connecting strip and set screw included.

Please consult MODU representative for further information and assistance.

Units: Dimension (mm)

Vertical Bends MR2 (BT)



Vertical Bend, 5°

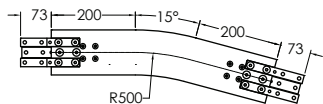
Item Code	Weight	Supply
MR2 BV 5R500	5.6 kg	1 set

Effective track length:

R500: 0.44m 1-way (0.88m 2-way)

Tolerance: $\pm 2^\circ$ & Radius: $\pm 10\text{mm}$

- Connecting strip and set screw included.



Vertical Bend, 15°

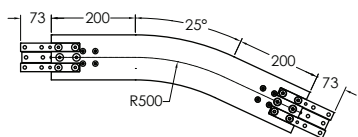
Item Code	Weight	Supply
MR2 BV 15R500	6.5 kg	1 set

Effective track length:

R500: 0.53m 1-way (1.06m 2-way)

Tolerance: $\pm 2^\circ$ & Radius: $\pm 10\text{mm}$

- Connecting strip and set screw included.



Vertical Bend, 25°

Item Code	Weight	Supply
MR2 BV 25R500	7.1 kg	1 set

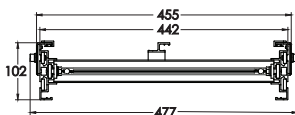
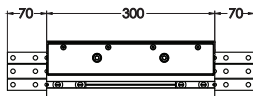
Effective track length:

R500: 0.62m 1-way (1.24m 2-way)

Tolerance: $\pm 2^\circ$ & Radius: $\pm 10\text{mm}$

- Connecting strip and set screw included.

Chain Installation Section (BT)



Item Code	Weight	Supply
MR2 BT CIS 300	5.3 kg	1 Unit

- Connecting strip and set screw included.

