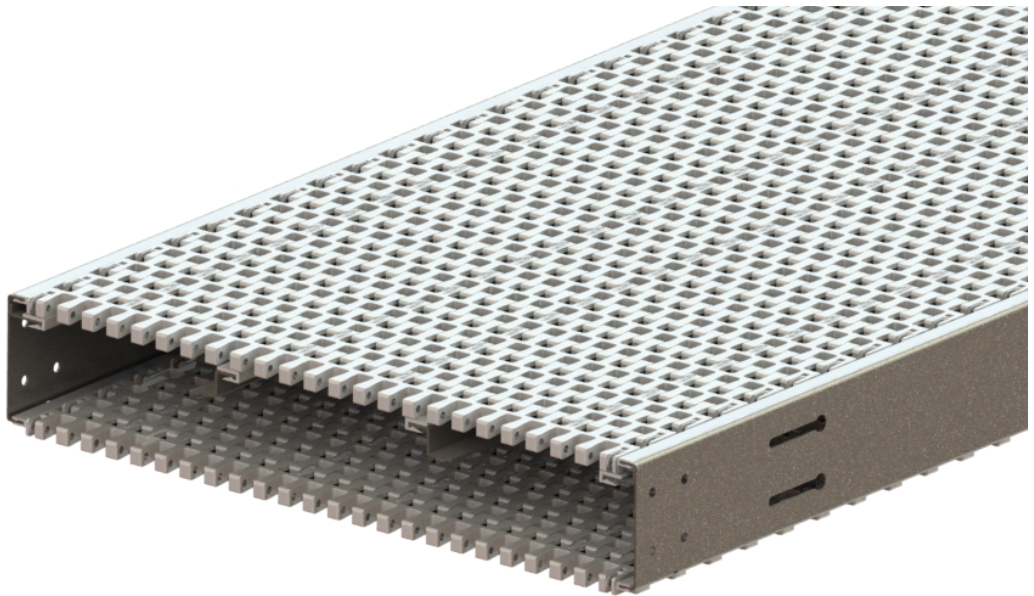


# Conveyor System DF2



## Description

585 mm width thermoplastic chain with stainless steel frame conveyor system.

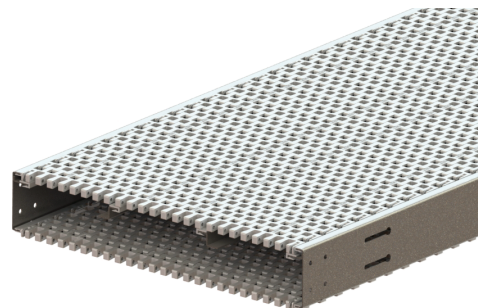
## Examples of application industries

Personal Products, Pharmaceutical & Chemical Industry, Automotive & Machined Parts Industry, Food & Packaging Industry, Electrical & Electronic Industry, Paper Converting Industry and Optical Industry

## Technical characteristics

Chain Width		585 mm
Chain Pitch		45 mm
Chain Weight		7.08 kg/m
Chain Maximum Working Tension	With Bend	2100N
	Without Bend	2200N
Max Product Weight*		30 kg
Total Load*		300 Kg
Working Temperature*		-10°C to 60°C
Max Conveyor Length*		30m
Max Speed*		50 m/min
Drive Unit Capacity		2200 N
Item Width*		<700 mm

\* Actual limit may vary according to conveyor layout and application.

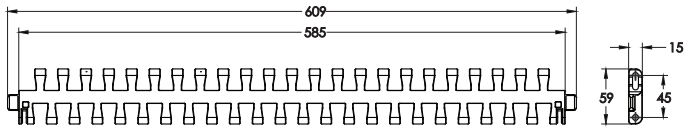


Please consult MODU representative for further information and assistance.

Units: Dimension (mm)

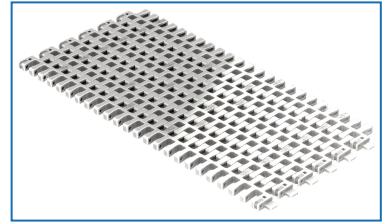
## Chains MF2

### Plastic Curve Belt

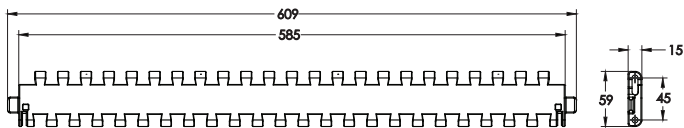


- 8.5mm belt gap.
- Suitable for conveyor configuration with incline/decline up to 5°.
- Accumulation possible.

Item Code	Material	Colour	Weight	Supply
MF2 ST CP 5	POM	White	35.4 kg	5m/roll

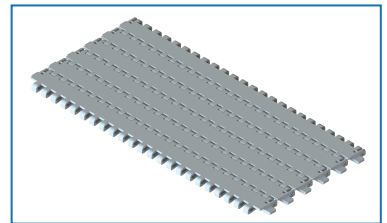


### Plastic Straight Belt

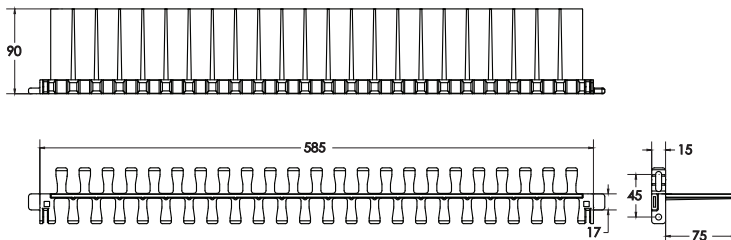


- 0mm belt gap.
- Suitable for conveyor configuration with incline/decline up to 5°.
- Accumulation possible.

Item Code	Material	Colour	Weight	Supply
MF2 ZG CP 5	POM	White	38.2 kg	5m/roll

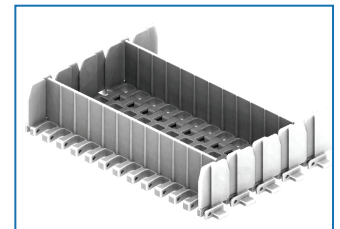


### Plastic Cleated Belt



- Required for vertical or steep inclined / declined conveyor.
- Accumulation not possible.
- Not suitable to be use with Combined and Catenary Drive.
- Please specify pitch between cleat for ordering (eg. MF2 ST CC 3x15P 3p = Every 3rd link to be cleated).
- \*\*Please consult MODU representative for actual Chain weight.

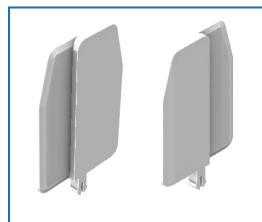
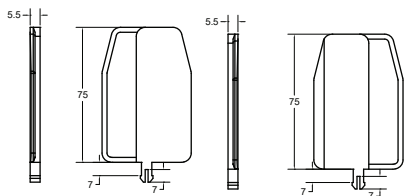
Item Code	Material	Colour	Weight	Supply
MF2 ST CC 3	POM	White	-	3m/roll



Please consult MODU representative for further information and assistance.

Units: Dimension (mm)

## Side Guard L-R



Item Code	Material	Colour	Weight	Supply
MT2 CLP G-75	POM	White	1.7kg/pack	50pcs/pkt

## Chain Accessories MF2

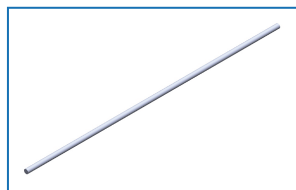
### Lubricant For Chain



Item Code	Weight	Supply
MA SL	0.35 kg	1 pc

Silicone-based lubricant, 400ml

### Chain Pin



Item Code	Material	Colour	Weight	Supply
MF2 PC	POM	White	0.16kg	10pcs/pkt

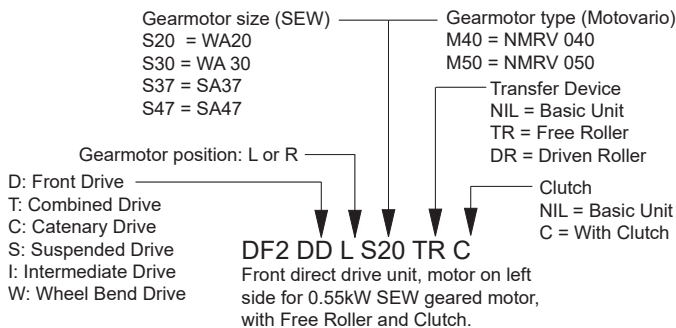
### Belt Lock



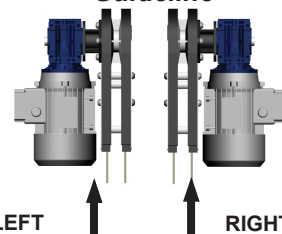
Item Code	Material	Colour	Weight	Supply
MT2 BL	POM	White	0.07kg	10pcs/pkt

## Drive Units DF2

### Item Code Guideline For Drive Units



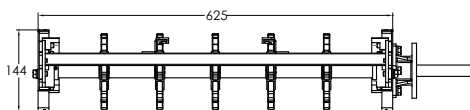
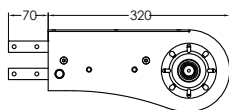
### Motor Orientation Guideline



\* Drive comes without gearmotor, Please refer TR-13 for gear motor options.

eg. Code for Basic unit; **DF2 DT R M50** => Combined drive unit, motor on right side for Motovario NMRV 050 geared motor.

### Front Drive Unit



Item Code	Weight	Supply
DF2 DD R/L S/M	12.0 kg	1 unit

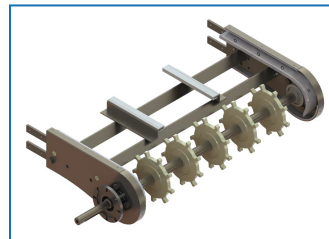
Effective track length: 0.8m

Traction force: 2200N

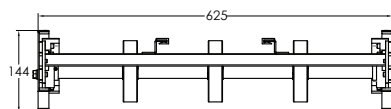
- Connecting strip and set screw included.

Note:

- Refer TR15 for chain effective track length calculation.



### Idler End



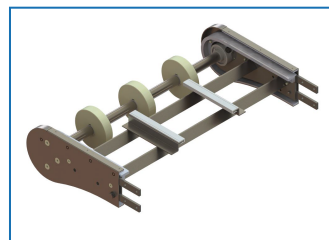
Item Code	Weight	Supply
DF2 IE 320	11.3 kg	1 unit

Effective track length: 0.8m

- Connecting strip and set screw included.

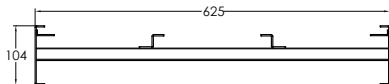
Note:

- Refer TR15 for chain effective track length calculation.





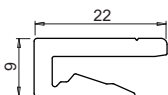
## Conveyor Beam DF2



Item Code	Weight	Supply
MF2 CB 2.4	21.0 kg	2.4 m

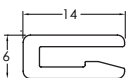


## Accessories DF2



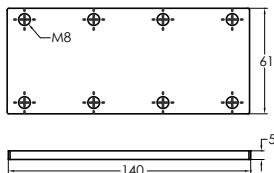
### Slide Rail

Item Code	Material	Colour	Weight	Supply
MA2 SR 25	HDPE	Pure White	2.8 kg/roll	25m/roll
MA2 SR 25A	Anti-Static	Grey	2.8 kg/roll	25m/roll
MA2 SR 25U	UHMW-PE	Semi-Transparent White	3.5 kg/roll	25m/roll



### Slide Rail

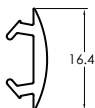
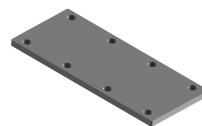
Item Code	Material	Colour	Weight	Supply
MS SR 25	HDPE	Pure White	1.2 kg/roll	25m/roll
MS SR 25A	Anti-Static	Grey	1.2 kg/roll	25m/roll
MS SR 25U	UHMW-PE	Semi-Transparent White	2.7 kg/roll	25m/roll
MS SR 25P	PVDF	Natural white	2.7 kg/roll	25m/roll



### Connecting Strip

Item Code	Weight	Supply
DA CS 61X140	4.5 kg	10 pcs/pkt

- 8 pcs M8 set screw included.



### T-Slot Cover

Item Code	Material	Colour	Weight	Supply
MB SC 25T	TPE	Grey	1.5 kg/roll	25m/roll
MB SC 25P	PVC	Light Grey	1.3 kg/roll	25m/roll



### Screw

Item Code	Weight	Supply
MA RS 6.5	0.02 kg	50 pcs/pkt



### Rivet

Item Code	Weight	Supply
MA RR 3	0.02 kg	50 pcs/pkt

Material: Brass Nickel plated (3mm)



### Slide Rail Assembling Tool

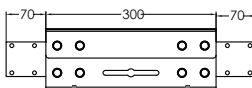
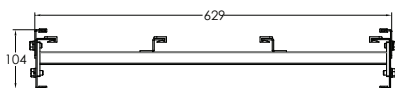
Item Code	Weight	Supply
MT2 SRA	0.4 kg	1 pc



### Slide Rail Cutter

Item Code	Weight	Supply
MA SC	0.5 kg	1 pc

## Chain Installation Section



Item Code	Weight	Supply
DF2 CIS 300	5.9 kg	1 Unit

- Connecting strip and set screw included.

